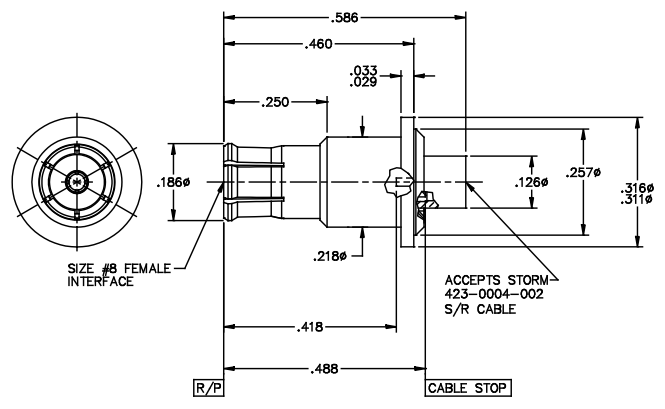
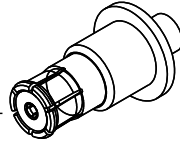


DATE REVISED: 10/1/10

CATALOG NUMBER  
1890-026-1

MATERIAL AND FINISH  
HOUSING AND BUSHING: CRES 303; PASSIVATED  
CENTER CONTACT AND GMS HOUSING: BeCu; GOLD PLATE 75 MICROINCHES TYPICAL OVER NICKEL PLATE 100 MICROINCHES TYPICAL  
DIELECTRICS: VIRGIN PTFE  
SPRING: STAINLESS STEEL



This drawing and any data contained herein is the property of Corning Gilbert Inc., and constitutes and contains proprietary and confidential information. Neither receipt nor possession of this drawing confers or transfers any right to duplicate, use or disclose any information contained herein except as expressly authorized by Corning Gilbert Inc.

SIZE #8 FEMALE FLOAT MOUNT TO STORM 423-0004-002 (.086 S/R)		IDENT CODE: 82316 REVISION: B	<b>Corning Gilbert Inc.</b>
SOURCE FILE: SK-2276	DWG. NO.: OL-1890-026-1	ASSY. PROC.: —	