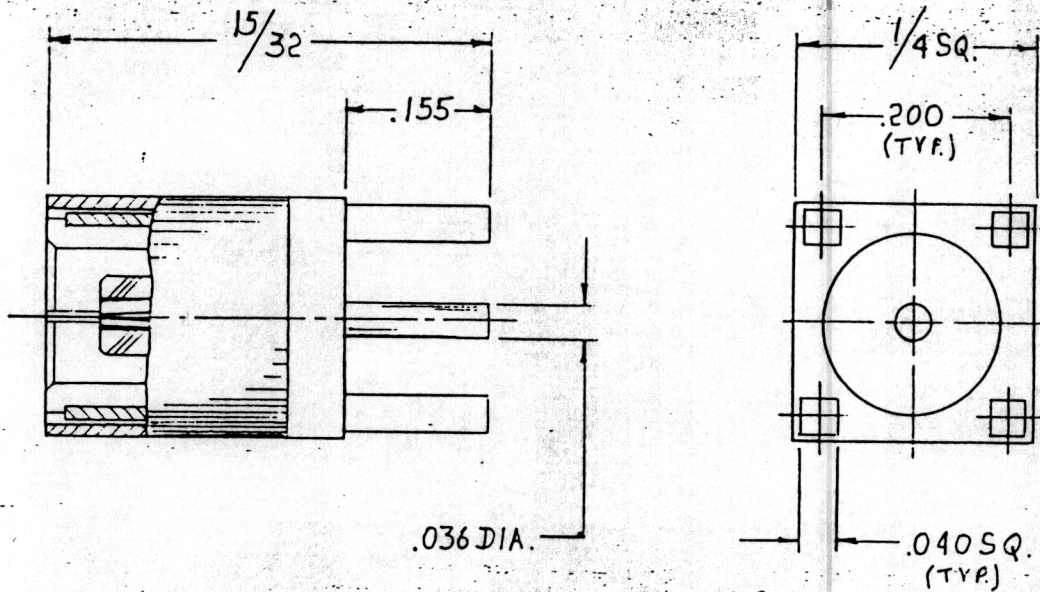


PROPRIETARY INFORMATION
 NOT TO BE RELEASED
 WITHOUT WRITTEN PERMISSION
 FROM AN AUTHORIZED
 REPRESENTATIVE OF
 APPLIED ENGINEERING PRODUCTS.



NOTES: CONFORMS TO MIL-C-39012

1. MATERIAL :

- A. BODY & HARDWARE - BRASS 1/2 HARD, QQ-B-626
- B. CONTACT & SPRING - BERYLLIUM COPPER, QQ-C-530
- C. INSULATOR - TEFLON MIL-P-19468

2. FINISH :

- A. BODY & HARDWARE - GOLD PLATED - PER MIL-G-45204
- B. CONTACT - GOLD PLATED PER MIL-G-45204

SLIDE-ON STRAIGHT FEMALE
 PLUG RECEPTACLE

APPLIED ENGINEERING PRODUCTS
 1475 WHALLEY AVE. NEW HAVEN, CONN.
 06525

CODE IDENT. 19505

3025-1511-000