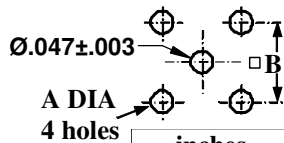
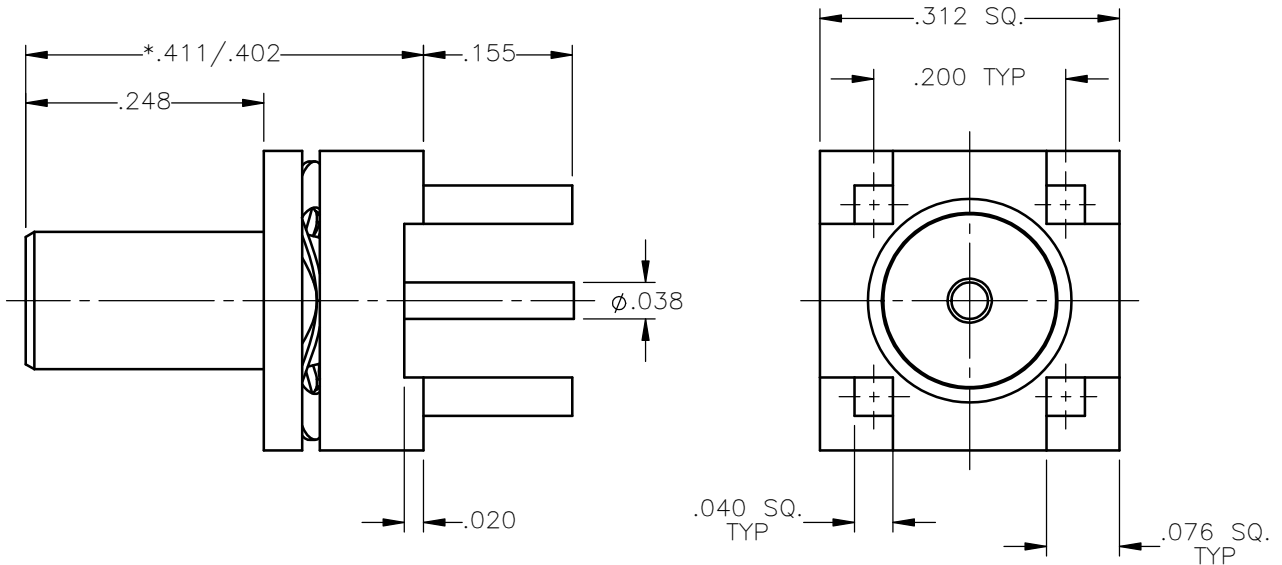


PANEL CUT OUT



	inches	
	Maxi	mini
A	-	.067
B	.203	.197

REVISIONS			
REV.	DESCRIPTION	DATE	APPROVED
A	INITIAL RELEASE	11/16/12	D.N.



NOTES:



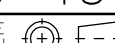
MATERIALS:

1. BODIES & CONTACTS = BRASS PER ASTM B16, ALLOY C36000, TEMPER H02.
2. INSULATORS = VIRGIN WHITE TEFLON PER ASTM D1710, GRADE 1, TYPE I, CLASS "B".
3. SPRING & CURVED SPRING WASHER = STAINLESS STEEL.

FINISHES:

1. CONTACTS = GOLD PLATE PER MIL-G-45204, TYPE II, CLASS 1, GRADE C, OVER .00010 TO .00020 STRESS FREE SULFAMATE NICKEL PER QQ-N-290.
2. SPRING = GOLD PLATE PER MIL-G-45204, TYPE II, CLASS 0, GRADE C, NO UNDERPLATE.
3. ALL OTHER METAL PARTS = GOLD PLATE PER MIL-G-45204, TYPE II, CLASS 0, GRADE C, OVER .000050 TO .00010 STRESS FREE NICKEL PER QQ-N-290.

* CONNECTOR IS SPRING LOADED AND CAN TRAVEL AXIALLY .009 INCHES AND ±.020 INCHES RADIAL FLOAT.

UNLESS OTHERWISE SPECIFIED DIMENSIONS ARE IN INCHES TOLERANCES ON	DWN:	DATE		Property of Radiall			
	D.N.	11/16/12		This document cannot be reproduced or communicated to a third party without prior written permission of RADIALL.			
DECIMAL	ANGLE	CHKD:	DATE	SLB STRAIGHT MALE JACK P.C.B. MOUNT RECEPTACLE			
		J.S.	11/16/12				
		APVD:	DATE	SIZE	FSCM NO.	DWG NO.	REV
		J.M.	11/16/12	A	19505	3509-1511-001	A
REFERENCE:	MATERIALS & FINISHES:		SCALE	THIRD ANGLE PROJECTION		SHEET 1 OF 1	
ORIGINATED: D.N. DATE: 11/16/12	SEE NOTES		5:1				

3509-1511-001