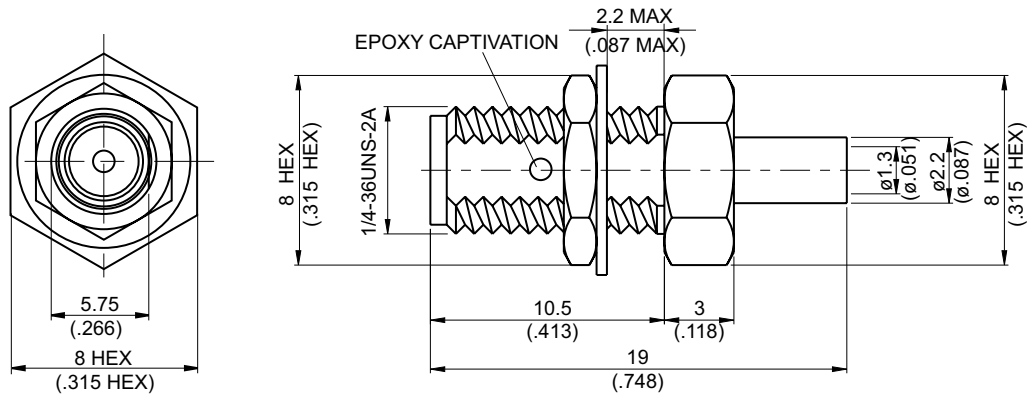
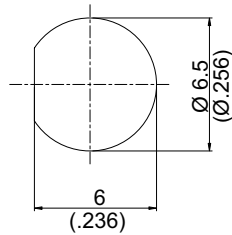


SMA8300L-0047

SMA Jack Solder For Bulkhead 50Ω



MOUNTING HOLE :



Parts	Material	Plating (Micro-inch)
Hex Nut	Brass	Gold 5 Over Nickel 50 Over Copper 50
Lock Washer	Brass	Gold 5 Over Nickel 50 Over Copper 50
Contact Pin	Beryllium Copper	Gold 20 Over Nickel 50 Over Copper 50
Insulator	Teflon	
Body	Brass	Gold 5 Over Nickel 50 Over Copper 50

Weight: 4.04 g

Suitable Cables: Semi-rigid.047

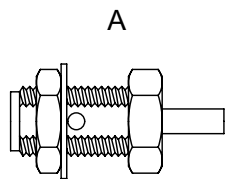
This part number complies with RoHS.

Notice: JYEBAO reserves the right to make modifications deemed appropriate.

CABLE ASSEMBLY INSTRUCTION

SMA8300L-0047

JYE BAO CO., LTD.



BODY+HEX NUT
+LOCK WASHER



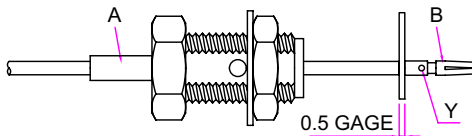
CONTACT PIN

DIAGRAM

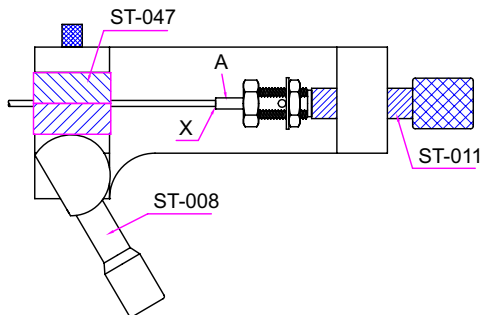
ASSEMBLY INSTRUCTION



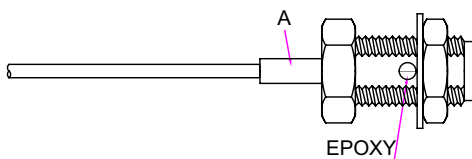
Step 1: STRIP AS SHOWN.



Step 2: SLIDE CONNECTOR " A " OVER CABLE.
Step 3: PUT 0.5 MM GAGE IN PLACE, INSERT CABLE'S CENTER CONDUCTOR INTO CENTER PIN " B " AND SOLDER IN " Y ".



Step 4: INSERT PREPARED CABLE INTO CONNECTOR BODY " A " AND USE SOLDERING FIXTURE " ST-008 ", INSERT TOOL " ST-047 " AND LOCATOR TOOL " ST-011 " TO FIX THE CONNECTOR. SOLDER IN " X ".



Step 5: POUR EPOXY INTO CONNECTOR

This part number complies with RoHS.

Notice: JYEBAO reserves the right to make modifications deemed appropriate.