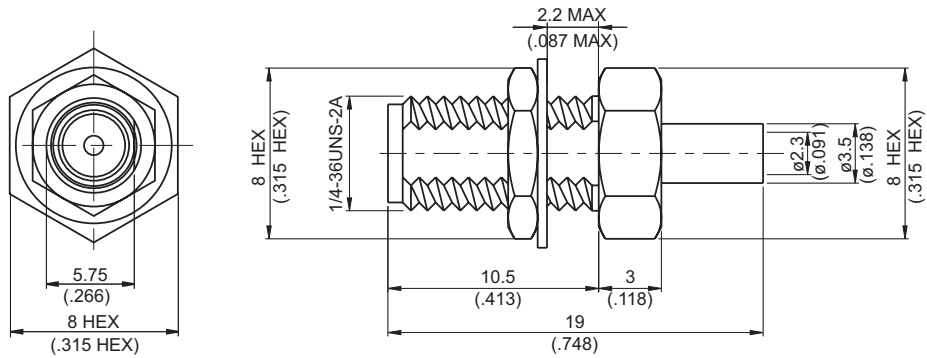
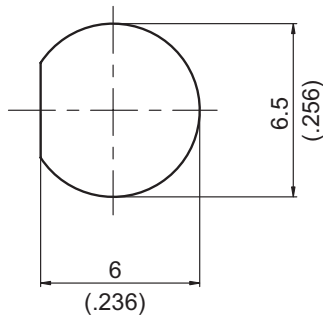


SMA8300L-0085

SMA Jack Solder For Bulkhead 50Ω



MOUNTING HOLE :



| Parts | Material | Plating (Micro-inch) |
|-------------|------------------|---------------------------------------|
| Hex Nut | Brass | Gold 5 Over Nickel 50 Over Copper 50 |
| Lock Washer | Brass | Gold 5 Over Nickel 50 Over Copper 50 |
| Contact Pin | Beryllium Copper | Gold 20 Over Nickel 50 Over Copper 50 |
| Insulator | Teflon | |
| Body | Brass | Gold 5 Over Nickel 50 Over Copper 50 |

Weight: 3.54 g

Suitable Cables: Semi-rigid.085

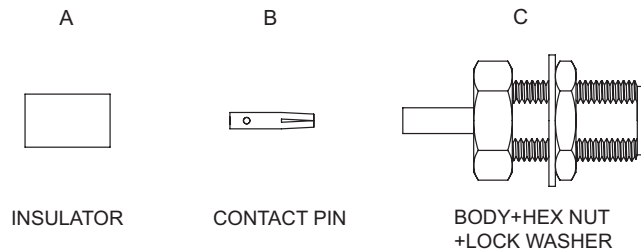
This part number complies with RoHS.

Notice: JYEBAO reserves the right to make modifications deemed appropriate.

CABLE ASSEMBLY INSTRUCTION

SMA8300L-0085

JYE BAO CO., LTD.



| DIAGRAM | ASSEMBLY INSTRUCTION |
|---------|---|
| | <p>Step 1: STRIP AS SHOWN.</p> |
| | <p>Step 2: INSERT CABLE'S CENTER CONDUCTOR INTO CENTER PIN AND SOLDER IN "Y", USE 0.3 MM GAGE.</p> |
| | <p>Step3: PUT CABLE INTO SOLDERING FIXTURE "ST-008". AND LOCK IT. PUT CONNECTOR AS SHOWN.</p> <p>Step4: SCREW LOCATOR TOOL "ST-011" TO THE POSITION AS SHOWN IN "S", AND SOLDER IN "X".</p> |
| | <p>Step5: USE DIELECTRIC INSERTION TOOL "ST-004" TO INSERT THE TEFLON "A".</p> |

This part number complies with RoHS.

Notice: JYEBAO reserves the right to make modifications deemed appropriate.