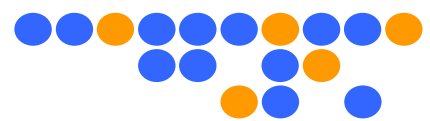


High Performance SMA Connector Data Sheet



PSF-S02 Series2

(SMA 4-Hole Panel Mount Jack)



Technical Data

Electrical Data	Impedance	50 Ω
	Max. Frequency	26.5 GHz
	Insulation Resistance	Min. 5 GΩ
Mechanical Data	Force to Engage/Disengage	2.0 pounds max.
	Durability	500 mating cycles
	Recommended Mating Torque	7~10 inch-pounds
Environmental Data	Operating Temp.	-40 °C ~125 °C
	Vibration	MIL-STD-202
	Shock	MIL-STD-202
	RoHS	Compliant

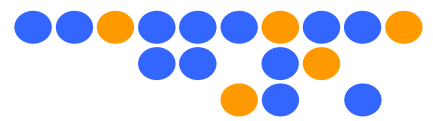
Material Data		Material	Surface Plating
	Center Contact	BeCu	Gold Plating on Ni
	Body	Brass	Gold Plating on Ni
	Insulator	PTFE	
	Captivation	Low Loss RESIN	

Part Number

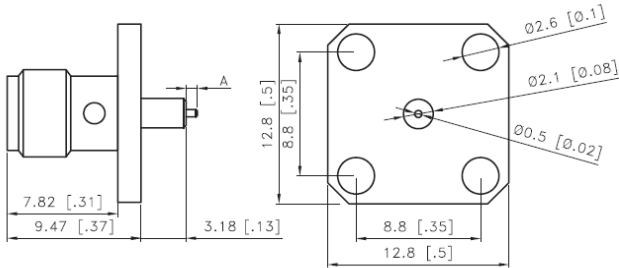
Unit : mm [inch]

Part No.	OLD Part No.	DIM A mm [inch]
PSF-S02-003	PSF-S02-000-1cc	0.80 [0.03]
PSF-S02-004	PSF-S02-000-2cc	1.50 [0.06]

High Performance SMA Connector Data Sheet



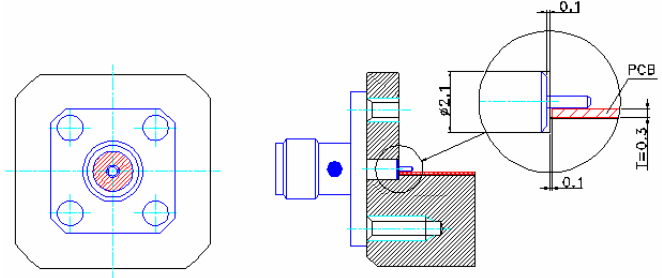
Outline Drawing



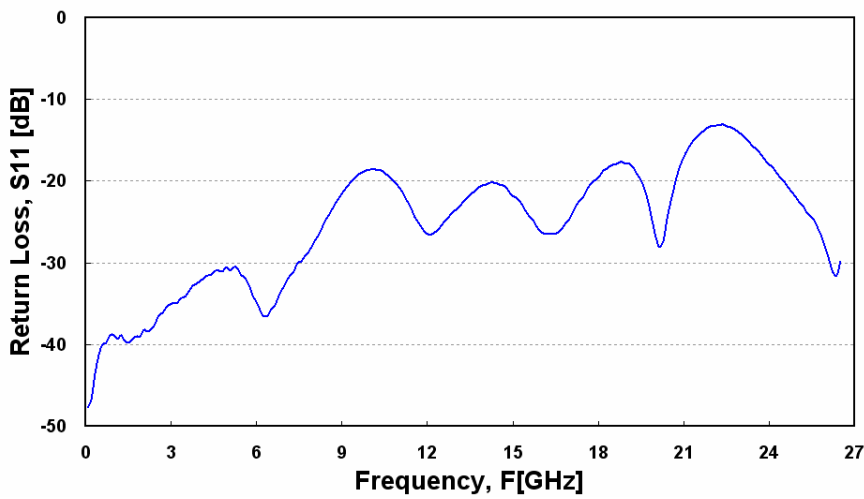
Unit : mm [inch]

Application Reference

For Panel Mount Connector



Performance



<DUT>
Connector
 - PSF-S02-001-1cc : 2ea
PCB
 - Rogers 4003
 - Thickness : 0.3 mm
 - Line Length : 15 mm