

- 1.0 PERFORMANCE:
 1.1 FREQUENCY RANGE DC-27 GHz
 1.2 VSWR TYP < 1.25 THRU 20 GHz
 < 1.07 (DC-11 GHz)
 1.3 SYSTEM IMPEDANCE 50 OHMS
 1.4 DWV: 1000 Vrms @ 60 Hz (SEA LEVEL)
 1.5 VOLTAGE RATING: 335 Vrms (SEA LEVEL)
 1.6 TEMP RANGE: -65 / +165 °C

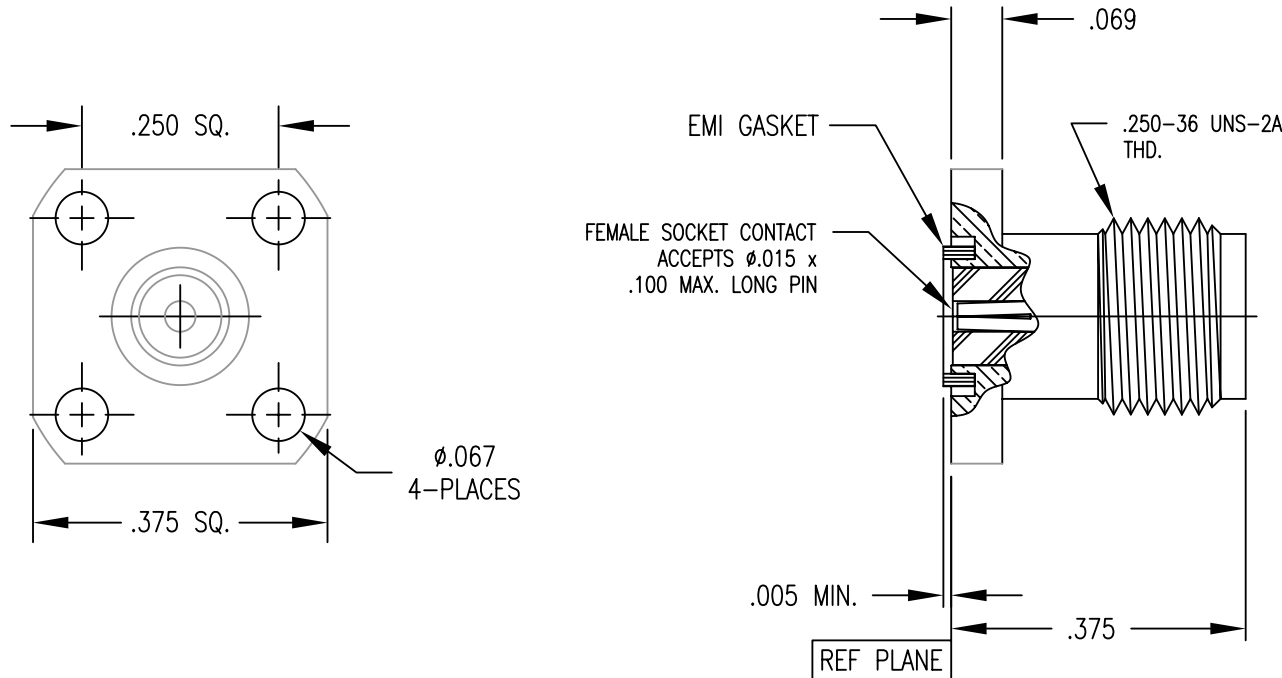
- 2.0 MATERIALS
 2.1 SOCKET CONTACT: BeCu
 2.2 BODY: STAINLESS STEEL 303
 2.3 INSULATOR: PTFE
 2.4 EMI GASKET: SILVER FILLED FLUOROSILICONE
 (REF: MIL-DTL-83528C)
 3.0 FINISHES: SEE TABLE

- 4.0 MECHANICAL
 4.1 INTERFACES PER MIL-STD-348
 4.2 SOCKET MATING CHARACTERISTICS:
 INSERTION FORCE $\phi.016$ PIN: 20 OZ TYP, 30 OZ MAX
 WITHDRAWAL FORCE $\phi.014$ PIN: 0.5 OZ MIN
 4.3 CONTACT RETENTION: 4 LBS MIN
 4.4 DURABILITY: 500 CYCLES

DWG NO. OL-1206-122-1		REV. A
PART NUMBER	BODY	CONTACT
1206-122-PJ	PASSIVATE	GOLD/Ni
1206-122-PW	PASSIVATE	GOLD/Cu

PLATE PER STI 7.3.1-8

DO NOT SCALE DRAWING



Rev.	Revisions	Disp.	Date	Dwn.	Appd.
A	ORIGINAL	NEW	11/14/08		
RECOM.	STOCK SIZE	FT/M	PCS	Ref.:	1206-86-PJ
REMOVE ALL BURRS AND SHARP EDGES .005 MAX.		INTERPRET PER ASME Y14.5M-1994			

THIS DRAWING CONTAINS CONFIDENTIAL INFORMATION PROPRIETARY TO SAN-TRON INC. IT MUST NOT BE REPRODUCED OR DISCLOSED TO OTHERS OR USED IN ANY OTHER WAY, IN WHOLE OR PART EXCEPT AS AUTHORIZED IN WRITING BY SAN-TRON INCORPORATED.

UNLESS OTHERWISE SPECIFIED:
 ALL DIMENSIONS ARE IN INCHES.
 ALL DIMENSIONS ARE AFTER PLATING.
 .XXX = $\pm.005$ ALL MACHINED SURFACES $63\sqrt{\text{MAX}}$.
 .XX = $\pm.01$ ANG. $\pm 1/2^\circ$ FRACTIONAL = $\pm 1/64$
 $\text{[} \text{ } \text{]}$.004 MAX. TIR. $\text{[} \perp \text{]}$ AXIS .001

THIRD ANGLE PROJECTION

DWN	FSH	11/14/08
CHKD	SJS	11/17/08
APPR	FSH	11/14/08

SAN-TRON, INC.
 4 NEWBURYPORT TPK. IPSWICH MA USA 01938
 TEL: 978 - 356 -1585 FAX: 978 - 356 -1573
 WWW.santron.com E MAIL: santron@santron.com

TITLE SMA RECEPTACLE, STRAIGHT FEMALE, 4 HOLE FLANGE, FIELD REPLACEABLE $\phi.015$ PIN

MATERIAL: SEE NOTE 2.0 FINISH: SEE NOTE 3.0

CAGE CODE: 50896 DWG NO. OL-1206-122-1 REV. A

SCALE X:X