

21-146-1000-04

Materials: A484 and A582. Beryllium Copper per ASTM-B-196, QQ-C-530
PTFE Fluorocarbon per ASTM-D-1710 Type 1

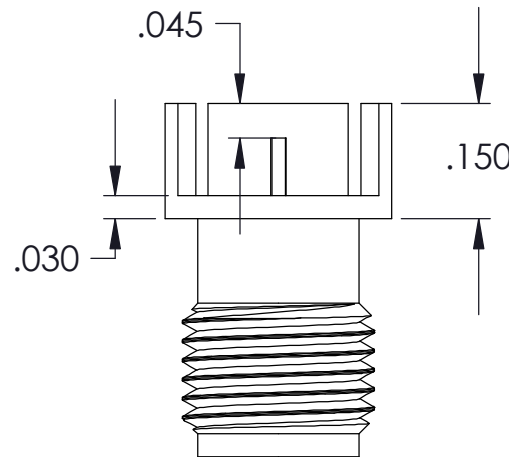
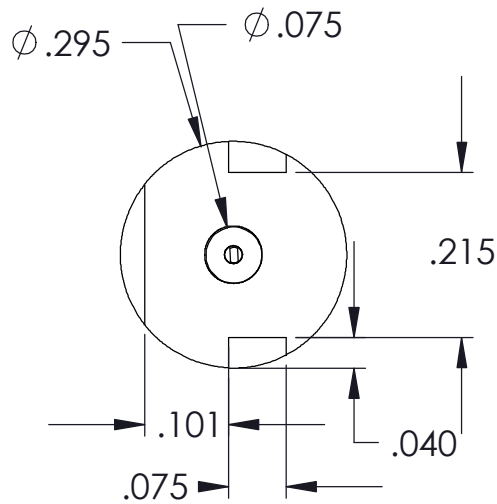
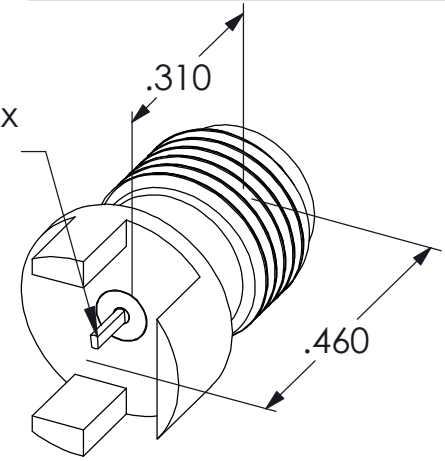
Finish: Center Conductors Body and solder components shall be plated per MIL-G-45204
Type II, Class 1 over Nickel plate per QQ-N-290.


Frequency: DC-27 GHz

VSWR: 1.2 TO 27 GHz

Insertion Loss: .05 SQT(F(GHz)) dB

.010 thk x
.020 wide x
.075 long



LTR	DESCRIPTION	DATE	APPR.	DRAWN SM	CHECKED	USED ON	 SRI CONNECTOR GAGE COMPANY 751 NORTH DRIVE MELBOURNE FLORIDA 32934
-	REL	1/06		APPR.	SCALE	21-146-1000-04	
				UNLESS OTHERWISE SPECIFIED: 1. REMOVE ALL BURRS 2. BREAK ALL CORNERS & EDGES .005 R. MAX 3. CHAMFER 1st & LAST THREADS 45° 4. SURFACE FINISHED 32 UNLESS OTHERWISE SPECIFIED. 5. DIAMETERS ON COMMON CENTERS TO BE CONCENTRIC WITHIN .002 T.I.R. 6. ALL DIMENSIONS ARE AFTER PLATING.		MATERIAL	TITLE:
				DIMENSIONS ARE IN INCHES TOLERANCES		FINISH	SMA FEMALE PCB MOUNT
				DECIMALS .X ± .030 .XX ± .010 .XXX ± .005	FRACTIONAL ± 1/64	ANGULAR X° ± 1° X'X ± 15'	
						SIZE A	FSCM NO. OHM01
						SHEET 1	DWG. NO. 21-146-1000-04