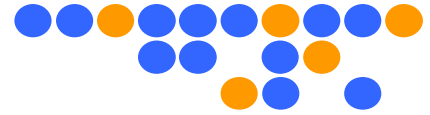


SMA Connector Data Sheet



PAF-S05 Series

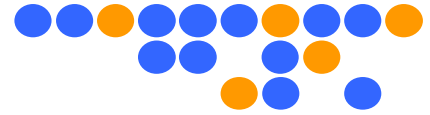
(SMA End Launch Jack)



Technical Data

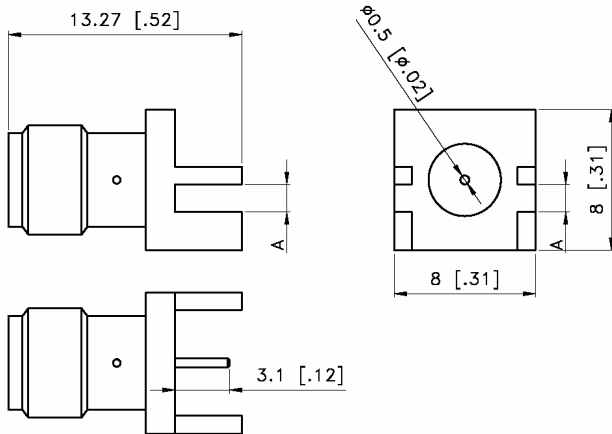
Electrical Data	Impedance	50 Ω
	Max. Frequency	6 GHz
	Insulation Resistance	Min. 5 G Ω
Mechanical Data	Force to Engage/Disengage	2.0 pounds max.
	Durability	500 mating cycles
	Recommended Mating Torque	7 to 10 inch-pounds
Environmental Data	Operating Temp.	-40 $^{\circ}$ C ~ 125 $^{\circ}$ C
	Vibration	MIL-STD-202
	Shock	MIL-STD-202
	RoHS	Compliant

Material Data		Material	Surface Plating
	Center Contact	BeCu	Gold Plating on Nickel
	Body	Brass	Gold Plating on Nickel
	Insulator	PTFE	



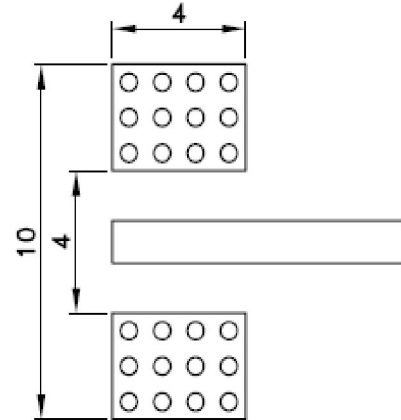
SMA Connector Data Sheet

Outline Drawing



Unit : mm [inch]

Recommended PCB Pattern



Part Number & Board Clearance

Part No.	OLD Part No.	DIM A
PAF-S05-000	PAF-S05-0.6mm	0.60 [0.024]
PAF-S05-001	PAF-S05-0.8mm	0.08 [0.031]
PAF-S05-002	PAF-S05-1.0mm	1.00 [0.039]
PAF-S05-003	PAF-S05-1.1mm	1.10 [0.043]
PAF-S05-004	PAF-S05-1.2mm	1.20 [0.047]
PAF-S05-005	PAF-S05-1.3mm	1.30 [0.051]
PAF-S05-006	PAF-S05-1.5mm	1.50 [0.059]
PAF-S05-007	PAF-S05-1.6mm	1.60 [0.063]
PAF-S05-008	PAF-S05-1.73mm	1.73 [0.068]
PAF-S05-009	PAF-S05-2.1mm	2.10 [0.083]
PAF-S05-010	PAF-S05-2.25mm	2.25 [0.089]
PAF-S05-011	PAF-S05-3.6mm	3.60 [0.142]