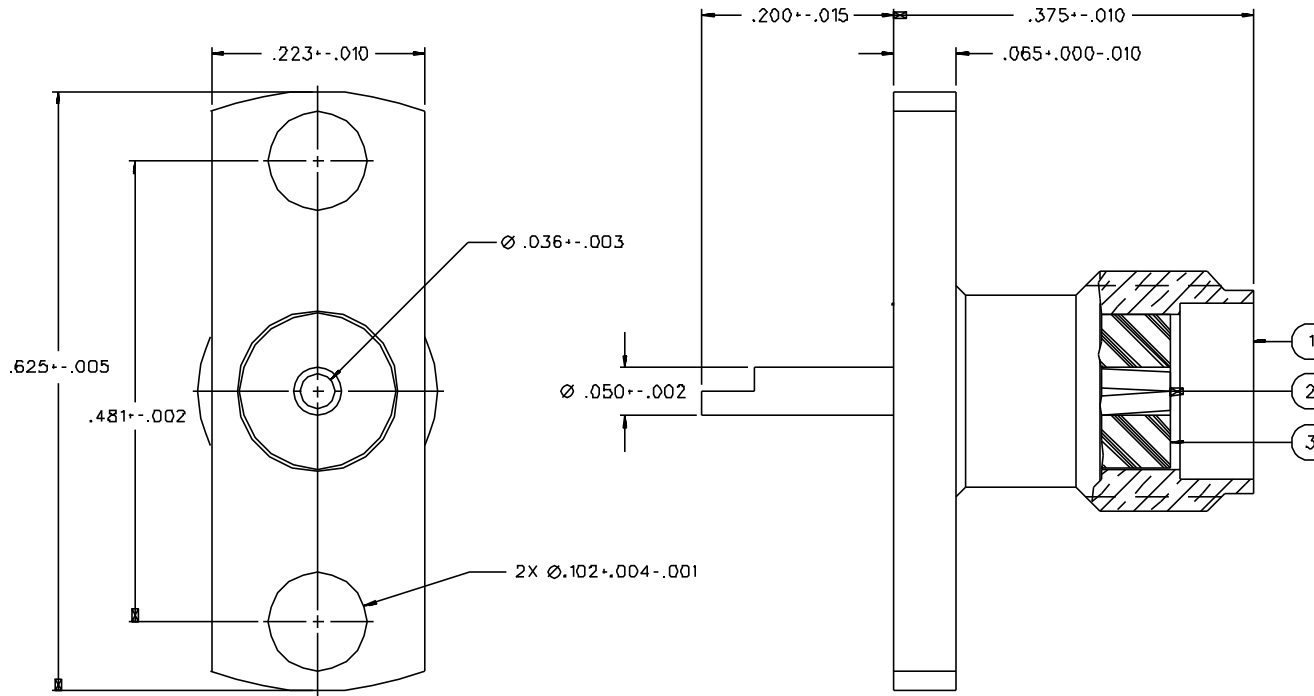


| PART NUMBER  | ITEM ①<br>BODY  | ITEM ②<br>CONTACT  | ITEM ③<br>INSULATOR |
|--------------|---|--|---------------------|
| 142-07D1-621 | BRASS<br>GOLD PL .00001 MIN OVER<br>NICKEL PL .00005 MIN OVER<br>COPPER PL .00005 MIN | BERYLLIUM COPPER<br>GOLD PL .00003 MIN OVER<br>NICKEL PL .00005 MIN OVER<br>COPPER PL .00005 MIN | TEFLON              |
| 142-07D1-626 | BRASS<br>NICKEL PL .0001 MIN OVER<br>COPPER PL .00005 MIN                             | BERYLLIUM COPPER<br>GOLD PL .00003 MIN OVER<br>NICKEL PL .00005 MIN OVER<br>COPPER PL .00005 MIN | TEFLON              |



NOTES:

1. SPECIFICATIONS:

IMPEDANCE: 50 OHMS  
 FREQUENCY RANGE: 0-18 GHZ  
 VSWR: NOT APPLICABLE  
 WORKING VOLTAGE: 335 VRMS MAX AT SEA LEVEL  
 DIELECTRIC WITHSTANDING VOLTAGE: 1000 VRMS MIN AT SEA LEVEL  
 INSULATION RESISTANCE: 5000 MEGOHM MIN  
 CONTACT RESISTANCE:  
 CENTER CONTACT - INITIAL 3.0 MILLIOHM MAX, AFTER ENVIRONMENTAL 4.0 MILLIOHM MAX  
 OUTER CONDUCTOR - INITIAL 2.0 MILLIOHM MAX, AFTER ENVIRONMENTAL NOT APPLICABLE  
 BRAID TO BODY - NOT APPLICABLE  
 CORONA LEVEL: 250 VOLTS MIN AT 70,000 FEET  
 INSERTION LOSS: NOT APPLICABLE  
 RF LEAKAGE: NOT APPLICABLE  
 RF HIGH POTENTIAL WITHSTANDING VOLTAGE: 670 VRMS MIN AT 4 AND 7 MHZ

MECHANICAL:

ENGAGE/DISENGAGE TORQUE: 2 INCH-POUNDS MAX  
 MATING TORQUE: 7-10 INCH POUNDS  
 COUPLING PROOF TORQUE: NOT APPLICABLE  
 COUPLING NUT RETENTION: NOT APPLICABLE  
 CONTACT RETENTION: 6 LBS MIN AXIAL FORCE  
 CABLE ACCEPTABILITY: NOT APPLICABLE  
 CABLE HEX CRIMP SIZE: NOT APPLICABLE  
 CABLE RETENTION: NOT APPLICABLE  
 DURABILITY: 500 CYCLES MIN

ENVIRONMENTAL:

(MEETS OR EXCEEDS THE APPLICABLE PARAGRAPH OF MIL-C-39012)  
 THERMAL SHOCK: MIL-STD-202, METHOD 107, CONDITION B EXCEPT 2DD DEG C HIGH TEMP  
 OPERATING TEMPERATURE: -65 DEG C TO 165 DEG C  
 CORROSION: MIL-STD-202, METHOD 101, CONDITION B  
 SHOCK: MIL-STD-202, METHOD 213, CONDITION 1  
 VIBRATION: MIL-STD-202, METHOD 204, CONDITION D  
 MOISTURE RESISTANCE MIL-STD-202, METHOD 106

|  |          |                      |                      |
|--|----------|----------------------|----------------------|
| DRAWING NO.  |          | C - 142-0701-621/630 |                      |
| 0  |          | REVISIONS            |                      |
| ENGINEERING RELEASE  |          |                      |                      |
| 01   | 06-27-88 | EJ RRF/RJB           | 6-30-88<br>ECO 23458 |
| ADDED: MOISTURE RESISTANCE SPEC, HIGH TEMP SPEC TO THERMAL SHOCK<br>CHANGED: .625 ± .005 WAS ± .010, .481 ± .010 WAS .480 ± .010, DIA .036 ± .003 WAS .025 ± .003, DIA .102 ± .004 ± .001 WAS ± .003, .065 ± .000 ± .010 WAS ± .010. |          |                      |                      |
| 2 7-16-90 [Signatures]   |          |                      |                      |
| VERSION UPDATE   |          |                      |                      |
| 3  | 12-4-90  | R M G H J S B        | 12-21-90<br>ECO 4004 |
| CHANGED: DIA .050 ± .002 WAS .050 ± .001, RF HIGH POT 4 AND 7 MHZ WAS 5  |          |                      |                      |
| 4  | 3-9-92   | R H J S B            | 3-11-92<br>ECO 40875 |
| CHANGED: .481 ± .002 WAS .481 ± .010, UPDATED GRAPHICS   |          |                      |                      |
| * REVISION NUMBER FOLLOWED BY AN ALPHA *<br>* CHARACTER INDICATES DRAWING CLASS *<br>* CATION OR PART NUMBER ADDITION ONLY *   |          |                      |                      |
| 4a   | 8-21-96  | R H J S B            | ECN 44136            |

CUSTOMER DRAWING

THIS DRAWING TO BE INTERPRETED PER ANSI Y 14.5M - 1982

"μSTATION"

COMPANY CONFIDENTIAL

|                                      |                    |                 |  |                                     |
|--------------------------------------|--------------------|-----------------|--|-------------------------------------|
| TOLERANCE UNLESS OTHERWISE SPECIFIED | DRAWN BY<br>EJ     | DATE<br>8-5-87  | Johnson Components<br>299 Johnson Ave.<br>P.O. Box 1732<br>Waseca, MN 56093-0832 |                                     |
| DECIMALS<br>.XX                      | CHECKED BY         | DATE            | TITLE<br>JACK ASSEMBLY<br>FLANGE MOUNT<br>SMA                                    |                                     |
| .XXX                                 | APPROVED BY<br>RRF | DATE<br>6-27-88 | CODE NO.   | DRAWING NO.<br>C - 142-0701-621/630 |
| MATL                                 | APPROVED BY<br>RJB | DATE<br>6-27-88 | SCALE 10:1   | U/W INCH SHEET 2 OF 2               |
| FINISH                               | RELEASE DATE       | 6-30-88         |  |                                     |