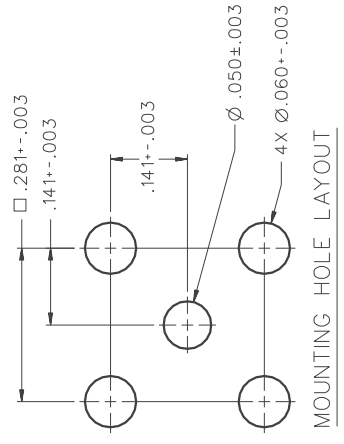
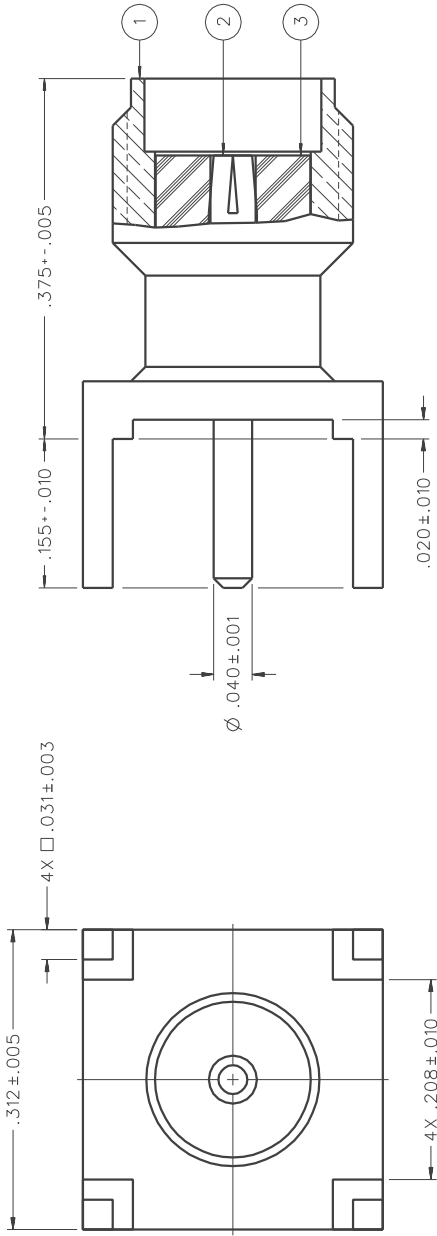


PART NUMBER	ITEM ① BODY	ITEM ② CONTACT	ITEM ③ INSULATOR
142-0701-211	BRASS GOLD PL .00001 MIN OVER NICKEL PL .00005 MIN OVER COPPER PL .00005 MIN	BERYLLIUM COPPER GOLD PL .00003 MIN OVER NICKEL PL .00005 MIN OVER COPPER PL .00005 MIN	TEFLON
142-0701-216	BRASS NICKEL PL .0001 MIN OVER COPPER PL .00005 MIN	BERYLLIUM COPPER GOLD PL .00003 MIN OVER NICKEL PL .00005 MIN OVER COPPER PL .00005 MIN	TEFLON
142-0701-217	BRASS NICKEL PL .0001 MIN OVER COPPER PL .00005 MIN	BERYLLIUM COPPER NICKEL PL .00005 MIN OVER COPPER PL .00005 MIN	TEFLON



NOTES:

- SPECIFICATIONS:
 - IMPEDANCE: 50 OHMS
 - FREQUENCY RANGE: 10-18 GHz
 - WORKING VOLTAGE: 335 VRMS MAX AT SEA LEVEL
 - INSULATION WITHSTANDING VOLTAGE: 1000 VRMS MIN AT SEA LEVEL
 - CONTACT RESISTANCE: 5000 MEGOHM MIN
 - CENTER CONTACT - INITIAL 3.0 MILLIOHM MAX, AFTER ENVIRONMENTAL 4.0 MILLIOHM MAX
 - OUTER CONDUCTOR - INITIAL 2.0 MILLIOHM MAX
 - BRAID TO BODY - NOT APPLICABLE
 - INSERTION LOSS: 250 DB AT 70,000 FEET
 - RF LEAKAGE: NOT APPLICABLE
 - RF HIGH POTENTIAL WITHSTANDING VOLTAGE: 670 VRMS MIN AT 4 AND 7 MHZ

MECHANICAL:

- ENGAGE/DISENGAGE TORQUE: 2 INCH-POUNDS MAX
- MATING TORQUE: 7-10 INCH POUNDS
- CABLE RETENTION: 6 LBS MIN AXIAL FORCE
- CONTACT RETENTION: 4 IN-OZ MIN RADIAL TORQUE
- CABLE ACCEPTABILITY: NOT APPLICABLE
- CABLE HEX CRIMP SIZE: NOT APPLICABLE
- CABLE RETENTION: NOT APPLICABLE
- DURABILITY: 500 CYCLES MIN

ENVIRONMENTAL:

- (MEETS OR EXCEEDS THE APPLICABLE PARAGRAPH OF MIL-PRF-39012)
- THERMAL SHOCK: MIL-STD-202, METHOD 107, CONDITION B
- OPERATING TEMPERATURE: -65 DEG C TO 165 DEG C
- CORROSION: MIL-STD-202, METHOD 101, CONDITION B
- SHOCK: MIL-STD-202, METHOD 213, CONDITION I
- VIBRATION: MIL-STD-202, METHOD 204, CONDITION D
- MOISTURE RESISTANCE: MIL-STD-202, METHOD 106

DRAWING NO. C-142-0701-211/220	
0	REVISIONS
ENGINEERING RELEASE	
2	7-10-90 E J A 8-14-90 J B W ECO 24762
ADDED: P/N 142-0701-217, DIA .050	
CHANGED: RF HIGH POT. 4 AND 7	
MATERIAL WAS 5 MHZ 4X DIA .060 ± .003	
3	3-18-93 R H I 3-25-93 H B H ECO 41606
VERSION UPDATE	
3a	3-10-94 R H I ECN 42346 H B H
VERSION UPDATE	
4	2-25-99 R H I ECN 46213 H B H
VERSION UPDATE	
***** REVISION NUMBER FOLLOWED BY AN ALPHA *****	
***** CHARACTER INDICATES DRAWING CLARIFICATION *****	
***** DRAWING NUMBER *****	
4a	10-16-01 R H I ECN 47954 H B H

CUSTOMER DRAWING

THIS DRAWING TO BE INTERPRETED PER ANSI Y 14.5M - 1982

"μ-STATION"

COMPANY CONFIDENTIAL	
299 Johnson Ave. P.O. Box 1732 Waseca, MN 56093-0832	
TOLERANCE UNLESS OTHERWISE SPECIFIED	DATE
DECIMALS	7-9-90
.XXX	CHECKED BY
.XXX	APPROVED BY
MATL	APPROVED BY
FINISH	RELEASE DATE
	8-14-90
TITLE	
JACK ASSEMBLY	
STRAIGHT PC MOUNT	
SMA	
CODE NO.	DRAWING NO.
C-142-0701-211/220	C-142-0701-211/220
SCALE 10:1	U/M INCH
	SHEET 2 OF 2