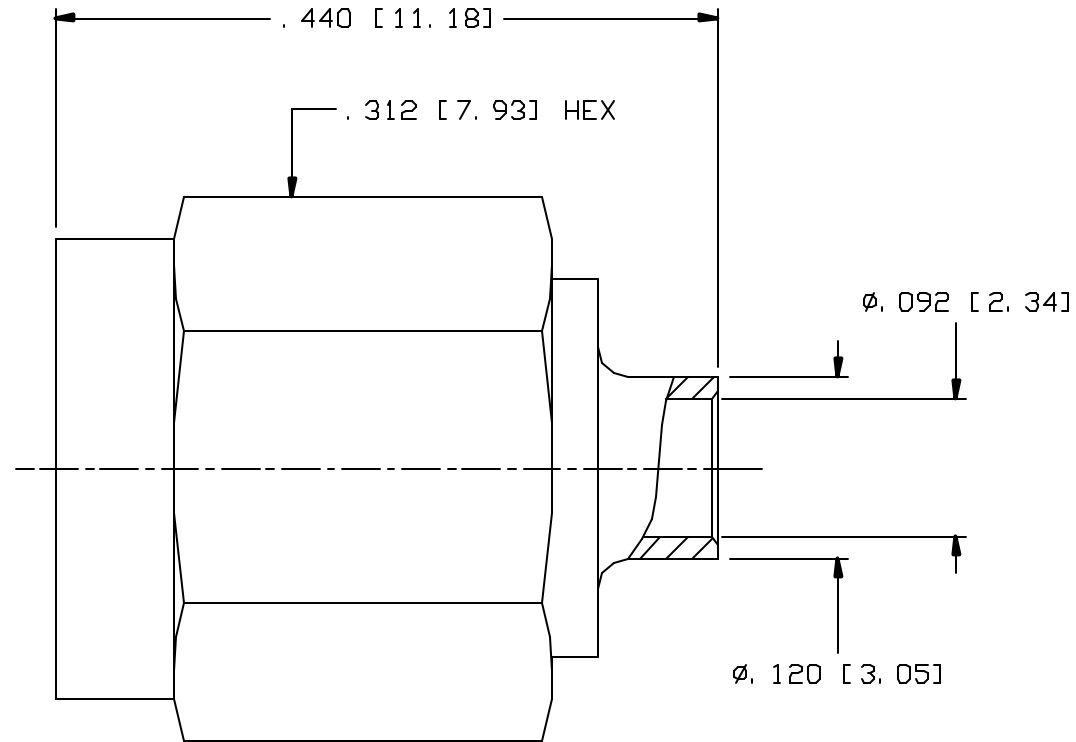


CAD DRAWING - NO MANUAL REVISIONS



NOTES:

1. DESIGN AND INTERFACE PER I. D. S. -22.
2. FOR USE WITH RG405 OR EQUIVALENT CABLES.
3. CONTACT SHIPPED LOOSE.
4. "J" PLATING TEST TO 20 GAMMA MAX.

				<b>PALCO CONNECTOR</b> 22 GREAT HILL RD., NAUGATUCK, CT 06770 UNLESS OTHERWISE SPECIFIED, PALCO WORKMANSHIP STANDARDS APPLY TOLERANCES (IN: DECIMALS: XX ±.01 .XXX ±.005 ANGLES ±1/2° 32' DIMENSIONS IN INCHES OR (METRIC) DO NOT SCALE PRINTS	DRAWN RVR	CHECKED HN	ENGINEER RVR	APPROVED HN	FSCM 58167
						DESCRIPTION SMA STRAIGHT PLUG FOR RG-405 (DIRECT SOLDER)			
					DATE 10/10/08	DRAWING NO. 22-0200-0868			PLATING OPT. J
REV.	DESCRIPTION	DATE	APPR.	CATALOG ITEM					