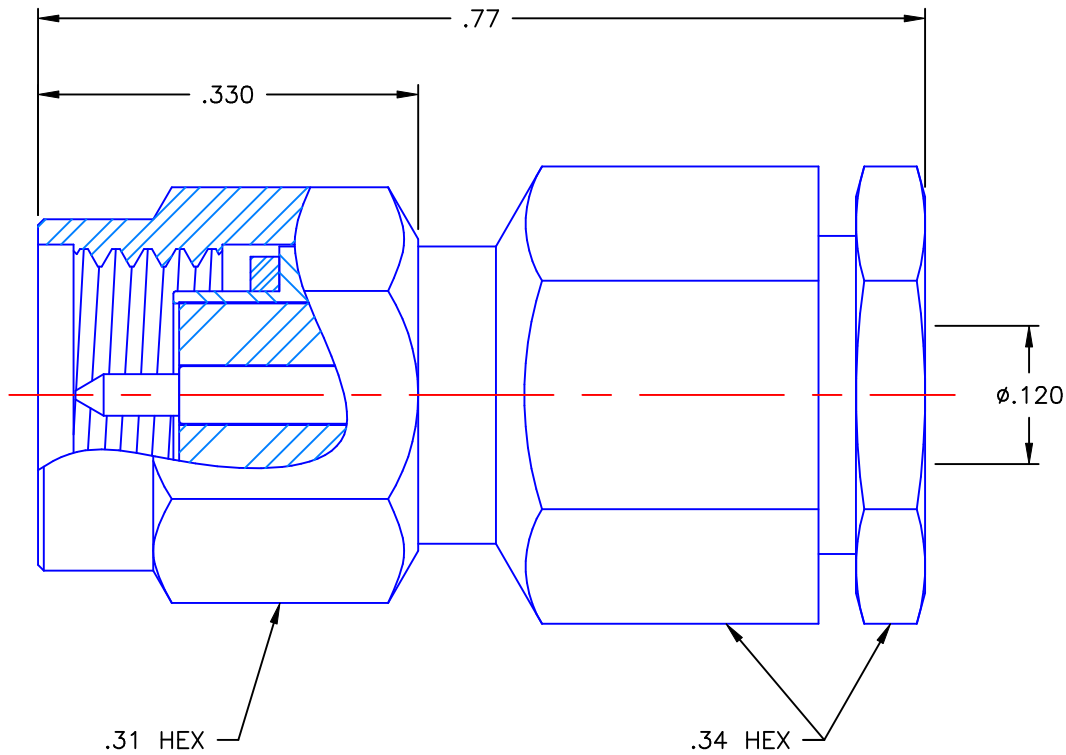


REVISIONS			
REV	DESCRIPTION	DATE	APPROVED
A	UPDATED	10/17/08	D.N.



NOTES: CONFORMS TO MIL-PRF-39012/55-3107


MATERIALS:

1. BODY & COUPLING NUT = STAINLESS STEEL PER ASTM A582, ALLOY 303, CONDITION "A".
2. INSULATORS = VIRGIN WHITE TEFLON PER ASTM D1710, GRADE 1, TYPE I, CLASS "B".
3. CONTACT & RETAINING RING = BERYLLIUM COPPER PER ASTM B196, ALLOY C17300, TEMPER TD04.
4. COMPRESSION NUT, FERRULE, & WASHER = BRASS PER ASTM B16, ALLOY C36000, TEMPER H02.
5. GASKET = SILICONE RUBBER PER ZZ-R-765, CLASS 2B, GRADE 65-75.

FINISHES:

1. COMPRESSION NUT, WASHER, FERRULE & RETAINING RING = NICKEL PLATE PER QQ-N-290, CLASS 1, GRADE G, EXCEPT .0001 TO .0002 THICK OVER .00005 TO .0001 THICK COPPER PER MIL-C-14550.
2. CONTACT = GOLD PLATE PER MIL-G-45204, TYPE II, CLASS 1, GRADE C, OVER .00010 TO .00020 STRESS FREE SULFAMATE NICKEL PER QQ-N-290.
3. ALL OTHER METAL PARTS = PASSIVATE PER QQ-P-35, TYPE VI.

Property of Radiall Incorporated
 This document cannot be reproduced or
 communicated to a third party without prior
 written permission of RADIALL Incorporated.

UNLESS OTHERWISE SPECIFIED DIMENSIONS ARE IN INCHES TOLERANCES ON	DWN: DATE	 APPLIED ENGINEERING PRODUCTS 104 John W. Murphy Dr. New Haven, CT 06513	SMA STRAIGHT PLUG SOLDER/CLAMP TO RG-316				
	D.N. 10/17/08						
CHKD: DATE	A.D.M. 10/17/08						
DECIMAL	ANGLE	APVD: DATE	SIZE		FSCM NO.	DWG. NO.	REV
		J.M. 10/17/08	A	19505	9201-9553-803	A	
REFERENCE:	MATERIALS & FINISHES:	SCALE 6:1		THIRD ANGLE PROJECTION		SHEET 1 OF 1	
ORIGINATOR: D.N. DATE: 10/17/08	SEE NOTES						

9201-9553-803