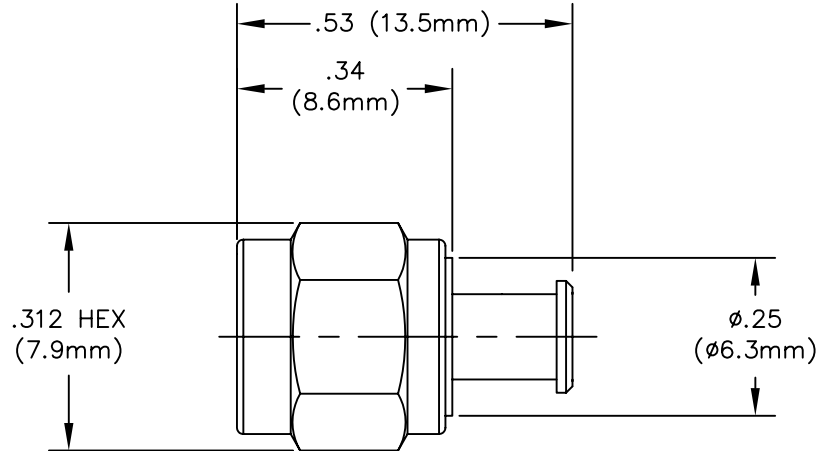


DWG NO. SMA109B SH 1 REV. B

ITEM	MATERIAL	FINISH
1. GASKET	SILICONE RUBBER	NA
2. SNAP RING	UNS C17200 HARD	NA
3. COUPLING NUT	UNS C36000	COPPER, TIN, ZINC TRIALLOY
4. CONTACT	UNS S30300 SS	GOLD
5. INSULATOR	TFE FLOURLACARBON	NA
6. BODY	UNS C36000	COPPER, TIN, ZINC TRIALLOY

REVISIONS			
REV	DESCRIPTION	DATE	APPROVED
-	INITIAL RELEASE.	99/04/07	R.JOHNSON
A	REV PER ECO 5306.	00/10/23	R.JOHNSON
B	REV PER ECO	-	-



NOTES: UNLESS OTHERWISE SPECIFIED.

1. REF: XSMA-C-P-STR-SW086-B-DS-06-XXXXXXX.

ITEM NO.	QTY REQD	FSCM NO.	PART OR IDENTIFYING NO.	NOMENCLATURE OR DESCRIPTION	MATERIAL SPECIFICATION	TYPE
PARTS LIST						
UNLESS OTHERWISE SPECIFIED DIMENSIONS ARE IN INCHES TOLERANCES ARE: FRACTIONS DECIMALS ANGLES ± .XX ± .01 ± 2° .XXX ± .005			CONTRACT NO.		5550 E. McDOWELL RD. MESA, ARIZONA 85215 (602) 985-9000	
MATERIAL SEE PARTS LIST			SIGNATURES DRAWN BY M. BONE		DATE 99/01/08	
FINISH			CHECKED BY R. THIELE		DATE 99/04/05	
NEXT ASSY			APPROVED BY B. CLYATT		DATE 99/04/05	
APPLICATION			APPROVED BY B. DAVIES		DATE 99/04/05	
DO NOT SCALE DRAWING				SIZE B	FSCM NO. 60637	DWG NO. SMA109B
				SCALE 5/1	ENF13 (02/14/97)	SHEET 1 OF 2

Semflex Inc

SMA STR PLUG, BRASS,
TO SW086

SCALE B 60637 DWG NO. SMA109B REV B