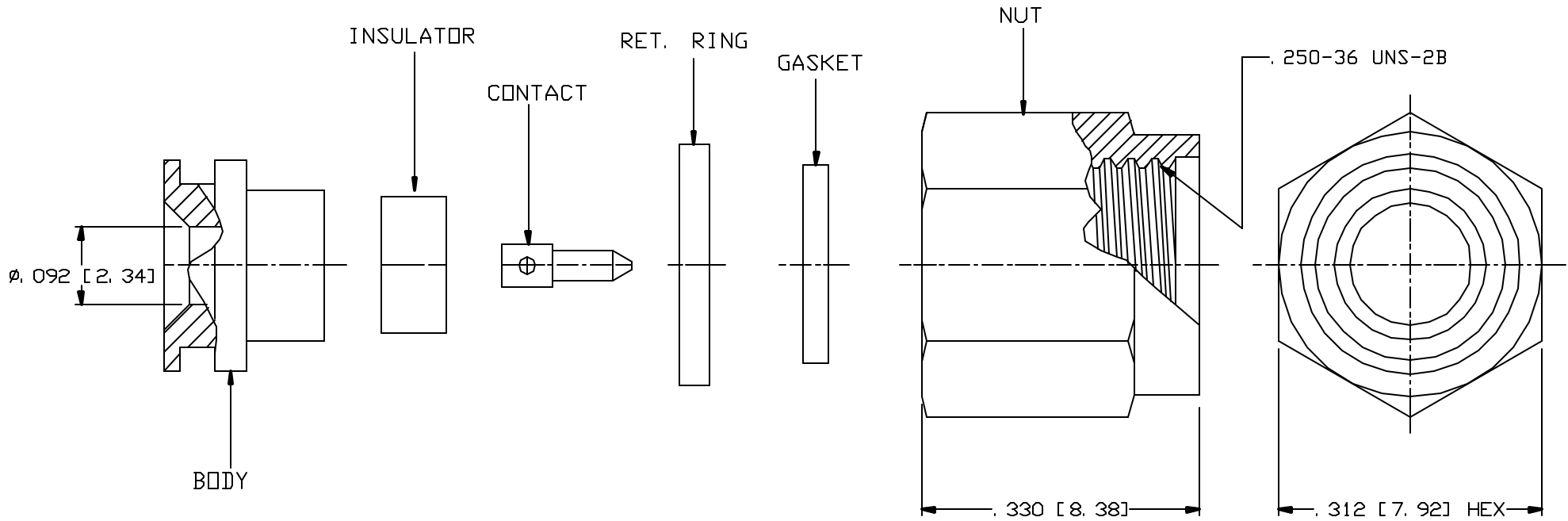


CAD DRAWING - NO MANUAL REVISIONS



NOTES:

1. THIS CONNECTOR SUPPLIED UNASSEMBLED.
2. DESIGN AND INTERFACE PER I. D. S. -20.
3. FOR USE WITH .086 S/R (M17/133) CABLE.

				PALCO CONNECTOR 22 GREAT HILL RD., NAUGATUCK, CT 06770 UNLESS OTHERWISE SPECIFIED, PALCO WORKMANSHIP STANDARDS APPLY TOLERANCES ON: DECIMALS: XX ± .01 .XXX ± .005 ANGLES ±1/2° 32' DIMENSIONS IN INCHES OR (METRIC) DO NOT SCALE PRINTS	DRAWN MY	CHECKED HN	ENGINEER DLD	APPROVED HN	FSCM 58167
						DESCRIPTION SMA STRAIHGT PLUG DIRECT SOLDER			
D	PER ECN 5480	05/18/00	HN			DATE 05/18/00	DRAWING NO. 20-0200-0863	PLATING OPT. G, P	
REV.	DESCRIPTION	DATE	APPR.						

THE INFORMATION IN THIS DOCUMENT IS CONFIDENTIAL AND PROPRIETARY AND MAY NOT BE USED FOR ANY PURPOSE WITHOUT THE WRITTEN CONSENT OF PALCO.