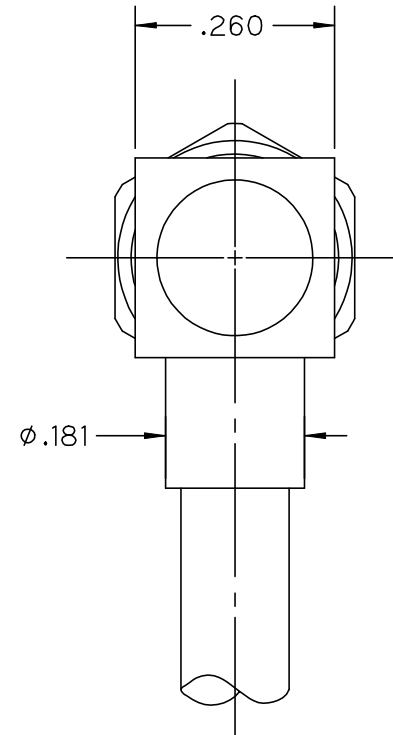
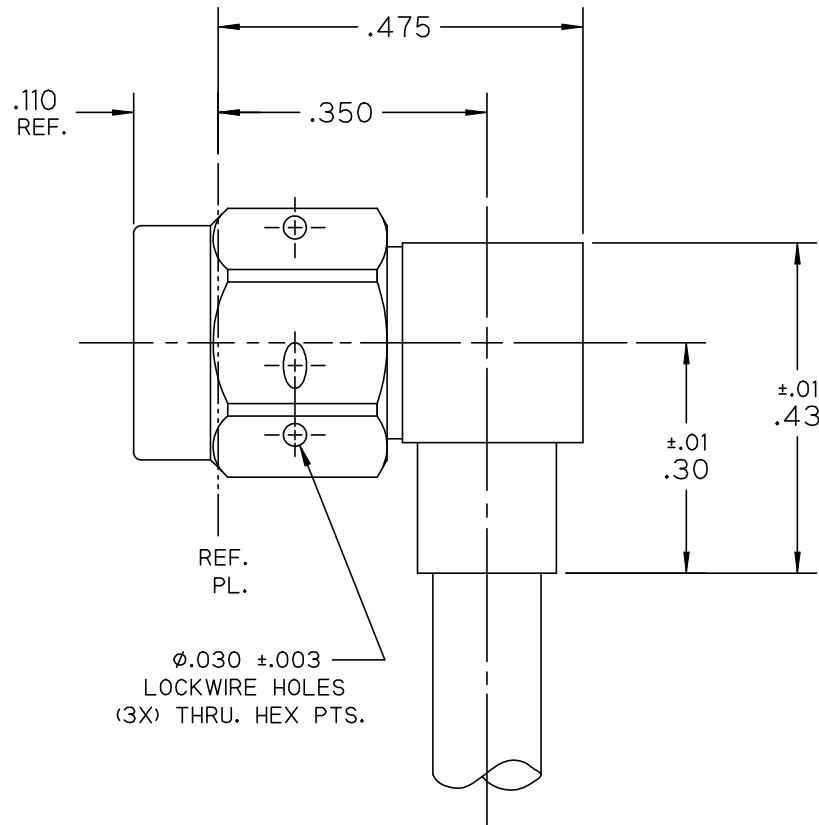


\*\*\*\*\* THIS DRAWING AND ITS CONTENTS ARE THE SOLE PROPERTY OF PRECISION CONNECTOR INC. AND ARE SUBJECT TO CHANGE WITHOUT NOTICE UNLESS OTHERWISE SPECIFIED \*\*\*\*\*

REV.	DESCRIPTION	DATE	BY	APPVD
A	INITIAL RELEASE	12/19/07	MJK	MJK



NOTES :

1.0 MATERIALS:

- 1.1 BODY & COUPLING NUT: STEEL, CORROSION RESISTANT PER ASTM-A582, UNS NO. S30300.
- 1.2 CENTER COND.: BERYLLIUM COPPER PER ASTM-B196, UNS C17300.
- 1.3 INSULATOR: PTFE FLUOROCARBON PER ASTM-D1710.
- 1.4 LOCK RING: BERYLLIUM COPPER PER ASTM-B197, UNS C17200.
- 1.5 GASKET: SILICONE RUBBER PER A-A-59588.
- 1.6 END CAP: BRASS PER ASTM-B16, UNS C36000.

2.0 FINISHES:

- 2.1 BODY, CENTER CONTACT & END CAP: GOLD PLATE PER ASTM-B488, 50 MICROINCHES MIN. THK. OVER ELECTROLYTIC NICKEL PLATE PER ASTM-B689 50 MICROINCHES MIN. THK.
  - 2.2 COUPLING NUT: PASSIVATE PER SAE-AMS-2700.
  - 2.3 GASKET, LOCK RING & INSULATOR: NONE.
- 3.0 INTERFACE: SMA PLUG PER PER PCI-SMA-PLUG (MEETS MIL-STD-348, FIGURE 310-1).



TOLERANCES UNLESS OTHERWISE SPECIFIED		DRAWN BY: MJK		TITLE : OUTLINE DRAWING, SMA RT. ANGLE PLUG, DIRECT SOLDER FOR RG-402 CABLE, L/W HOLES		
.XX	± .02	DATE: 12/19/07		SCALE	SHEET NO.	DRAWING NUMBER
.XXX	± .005	CAGE CODE		5:1	1 OF 1	3210-OL
.XXXX	± .0005	4MJR5				
ANGLES	± 2°					REV
						A