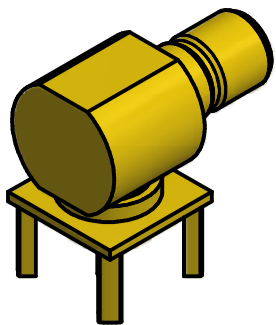


NOTES:

1. SPECIFICATIONS PER IDS-09
2. PC BOARD MOUNTING PER DS-16E
3. "J" PLATING - TESTED TO <1.00000mu.



<p>WARNING - THIS DOCUMENT CONTAINS TECHNICAL DATA WHOSE EXPORT IS RESTRICTED BY THE ARMS EXPORT CONTROL ACT (TITLE 22, U.S.C., SEC 2751, ET. SEQ.) OR THE EXPORT ADMINISTRATION ACT OF 1979, AS AMENDED, TITLE 50, U.S.C., APP 2401 ET SEQ. VIOLATIONS OF THESE EXPORT LAWS ARE SUBJECT TO SEVERE CRIMINAL PENALTIES. DISSEMINATE IN ACCORDANCE WITH PROVISIONS OF DOD DIRECTIVE 5230.25.</p>											
<p>MATERIAL:</p>				<p>UNLESS OTHERWISE SPECIFIED, PHOENIX WORKMANSHIP STANDARDS APPLY. DIMENSIONS IN INCHES OR (METRIC) DO NOT SCALE PRINTS</p> <p>TOLERANCES ARE: FRACTIONS: ± 1/64 DECIMALS: .XX ± .01 .XXX ± .003 ANGLES: ± 1/2°</p>		<p>APPROVALS</p> <p>DRAWN CA 2/12/20</p> <p>CHECKED JEM 2/12/20</p> <p>QA</p> <p>MFG</p> <p>ENGINEER CA 2/12/20</p> <p>APPROVED JEM 2/12/20</p>		<p><i>The PHOENIX Company of Chicago, Inc.</i></p> <p>22 GREAT HILL RD., NAUGATUCK, CT 06770 WWW.PHOENIXOFCHICAGO.COM</p>		<p>TITLE</p> <p>SMB, JACK RIGHT ANGLE, PC MOUNT</p>	
<p>THE INFORMATION DISCLOSED IN THIS DOCUMENT IS CONFIDENTIAL AND PROPRIETARY TO PHOENIX CO. INC. AND MAY NOT BE USED FOR MANUFACTURE OR ANY OTHER PURPOSE WITHOUT THE WRITTEN CONSENT OF THE PHOENIX CO. OF CHICAGO INC.</p>				<p>SIZE A 58167</p> <p>FSCM 09-3450-05</p> <p>DWG NO</p>		<p>REV C</p> <p>PLATING OPT. J</p>		<p>SCALE</p> <p>F.S.R. #</p>			
REV.	DESCRIPTION	DATE	APPR.			SHEET 1 OF 1					