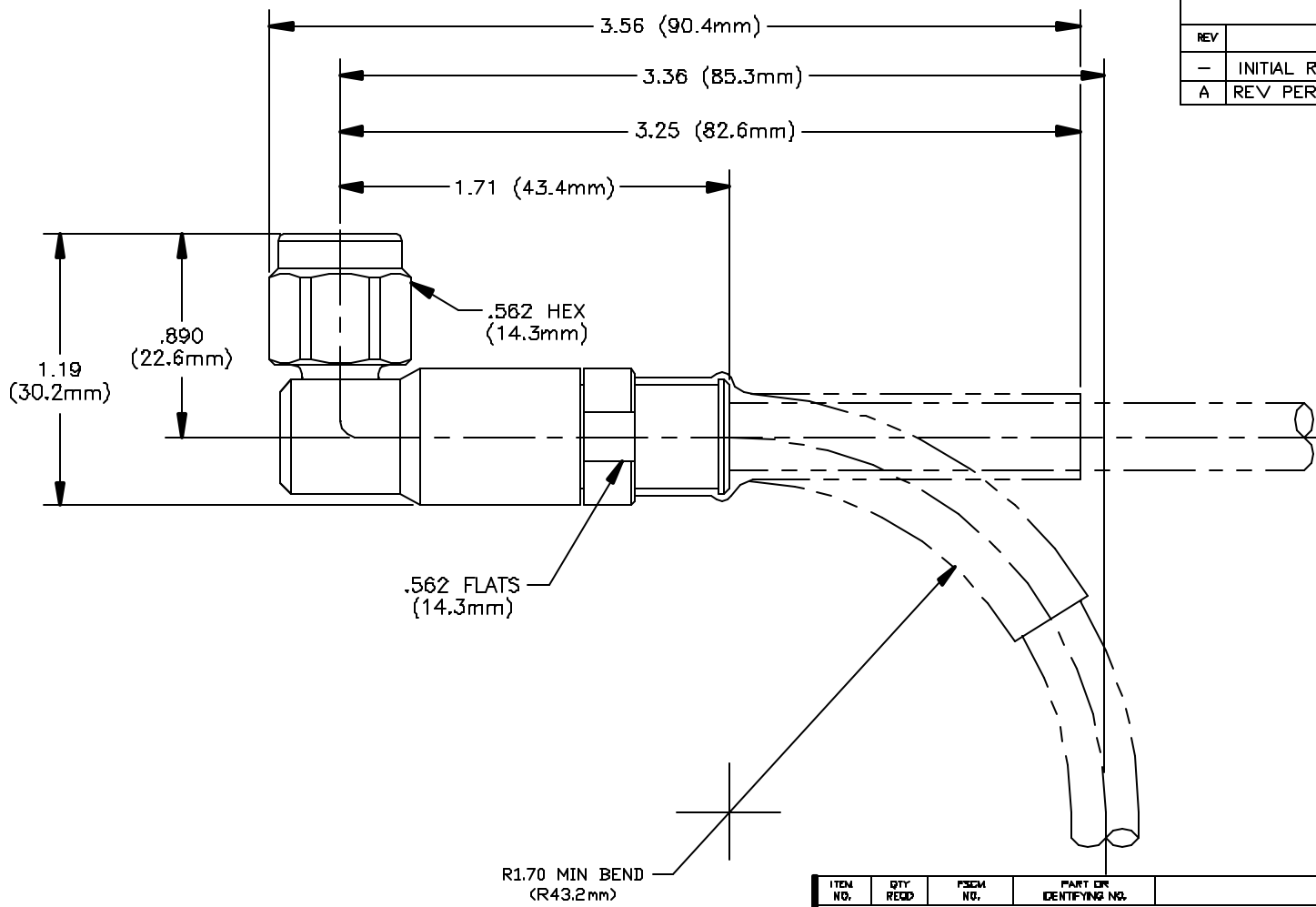


DWG NO. 21044-111 SH 1 REV. A



REVISIONS			
REV	DESCRIPTION	DATE	APPROVED
-	INITIAL RELEASE	3/2/01	NAVARETTE
A	REV PER ECO 5742	9/27/01	NAVARETTE

NOTES: UNLESS OTHERWISE SPECIFIED.  
 1. REF: ETNC-C-P-LRA-LA290-PF-SC-18-XXXXXX.

NEXT ASSY	USED ON

ITEM NO.	QTY REQD	FSCM NO.	PART OR IDENTIFYING NO.	NOMENCLATURE OR DESCRIPTION	MATERIAL SPECIFICATION	TYPE
PARTS LIST						
UNLESS OTHERWISE SPECIFIED DIMENSIONS ARE IN INCHES TOLERANCES ARE: FRACTIONS DECIMALS ANGLES ± .005 ± .01 ± 2° XXX ± .005				CONTRACT NO.		
MATERIAL SEE PARTS LIST				SIGNATURES		DATE
FINISH				DRAWN BY D. SMITH		01/02/22
APPLICATION				CHECKED BY E. CLYATT		01/02/22
DO NOT SCALE DRAWING				APPROVED BY E. CLYATT		01/02/22
				APPROVED BY M. GEGHER		01/02/23
			SIZE B		FSCM NO. 60637	DWG NO. 21044-111
			SCALE 2/1		ENF13 (02/14/87)	SHEET 1 OF 2



5560 E. McDOWELL RD.  
 MESA, ARIZONA 85215  
 (602) 885-8000

ETNC LRA PLUG TO LA290

REV  
A