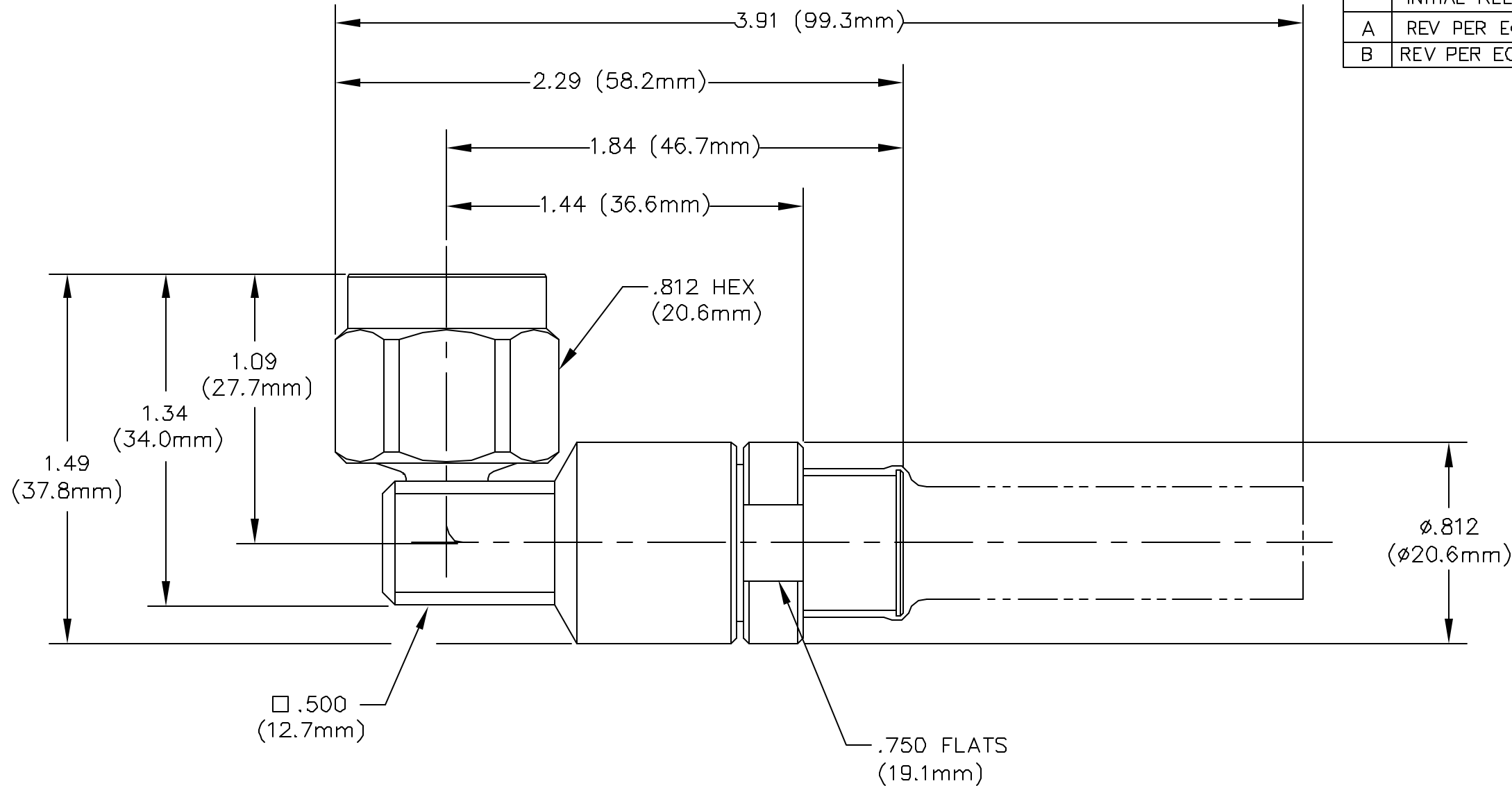


THE INFORMATION CONTAINED HEREON IS THE PROPERTY OF SEMFLEX INC., RECEIPT, POSSESSION OR TRANSMITTAL OF THIS DRAWING DOES NOT LICENSE OR IMPLY ANY RIGHT TO USE, SELL, PROTOTYPE OR MANUFACTURE FROM THIS INFORMATION. NO REPRODUCTIONS OR PUBLICATION OF THIS INFORMATION, IN WHOLE OR IN PART, SHALL BE MADE WITHOUT WRITTEN AUTHORIZATION FROM SEMFLEX INC.

DWG NO. 20739-111 SH 1 REV. B

REVISIONS			
REV	DESCRIPTION	DATE	APPROVED
-	INITIAL RELEASE.	93/07/21	L. PULOTU
A	REV PER ECO 5378.	2/8/00	NAVARETTE
B	REV PER ECO 6019	6/25/04	THIELE



NOTES: UNLESS OTHERWISE SPECIFIED.

- REF: XXSC-C-P-LRA-HP450-PF-SC-11-XXXXXXX.
- CABLE MINIMUM INSIDE BEND RADIUS 2.50".

ITEM NO.	QTY REQD	FSCM NO.	PART OR IDENTIFYING NO.	NOMENCLATURE OR DESCRIPTION	MATERIAL SPECIFICATION	TYPE
PARTS LIST						
UNLESS OTHERWISE SPECIFIED DIMENSIONS ARE IN INCHES TOLERANCES ARE: FRACTIONS DECIMALS ANGLES ± .XX ± .01 ± 2° .XXX ± .005				CONTRACT NO.		Semflex Inc 5550 E. McDOWELL RD. MESA, ARIZONA 85215 (602) 985-9000
MATERIAL SEE PARTS LIST				SIGNATURES	DATE	
FINISH				DRAWN BY G. BISSONNETTE	93/07/15	SC LRA PLUG TO HP450
NEXT ASSY				CHECKED BY R. THIELE	93/07/15	
USED ON				APPROVED BY R. THIELE	93/07/15	
APPLICATION				APPROVED BY C.W. MENNERICK	93/07/15	SIZE FSCM NO. DWG NO. REV B 60637 20739-111 B
DO NOT SCALE DRAWING				SCALE 2/1		ENF13 (02/14/97) SHEET 1 OF 2

PARTS LIST			
ITEM NO	QTY REQD	PART NO	DESCRIPTION
1	1	40124-13	GASKET
2	1	40127-07	SNAP RING
3	1	41756-01	NUT, REAR
4	1	41856	SLEEVE
5	1	41857	INSULATOR, SC FRONT
6	1	41859-01	COUPLING NUT, SC
7	1	41891	SLEEVE
8	1	41932	SLEEVE, FRONT
9	1	42139-01	CONTACT, FEMALE
10	1	42140	HOUSING, RA
11	1	42143-01	INSULATOR, REAR
12	1	42207-03	SLEEVE, SOLDER
13	2	42253-02	INSULATOR
14	1	42253-05	INSULATOR
15	1	42311	BODY, SC PLUG
16	1	42312	CONTACT, SC LRA PLUG
17	1	42317	SLEEVE, LRA
18	1	92311A072	2-56 x 1/16 SET SCREW(MCMMASTER)

