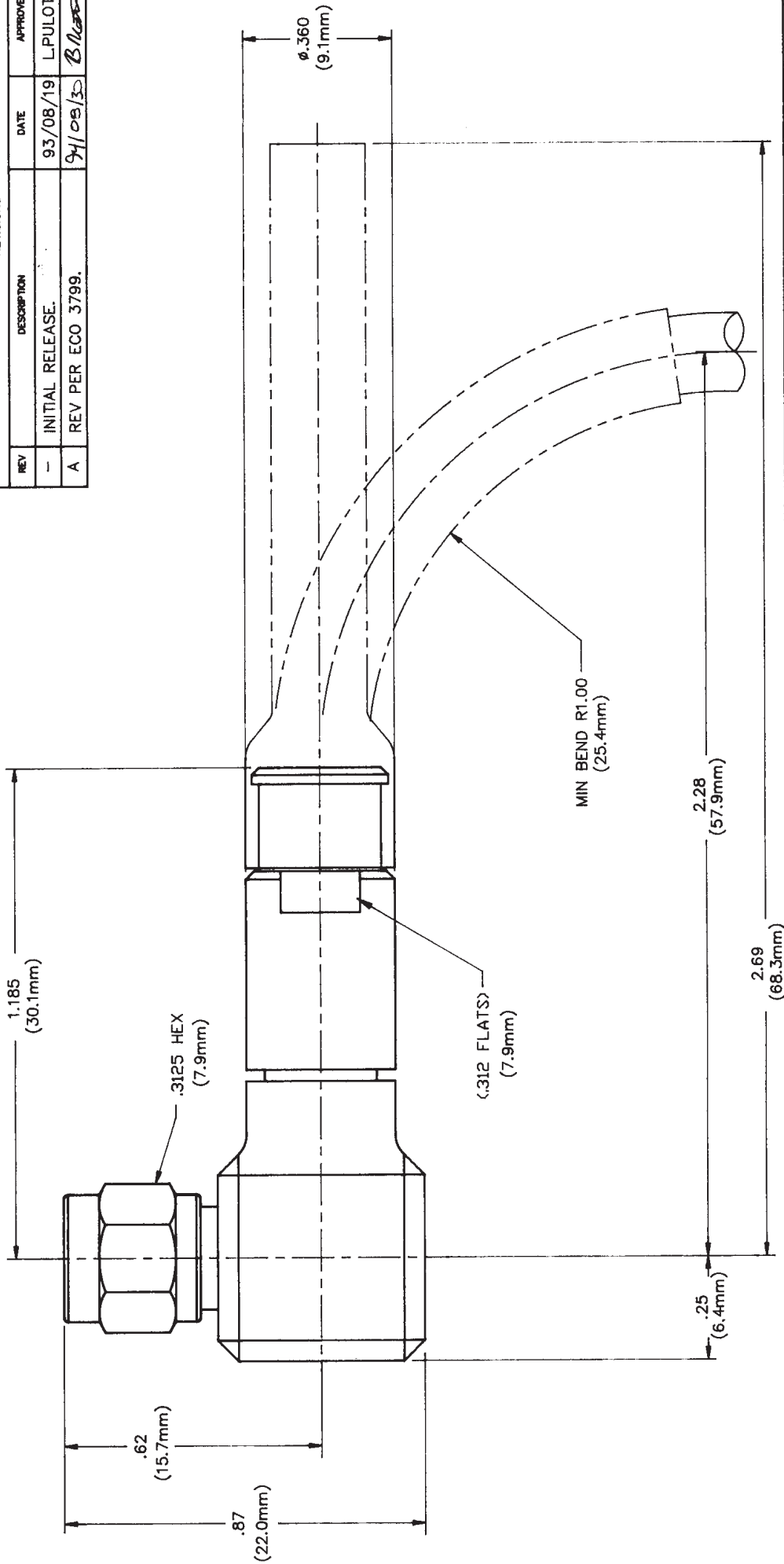


DWG NO. 20494-111 SH 1 REV. A

REVISIONS

REV	DESCRIPTION	DATE	APPROVED
-	INITIAL RELEASE.	93/08/19	L.PULOTU
A	REV PER ECO 3799.	94/09/30	<i>B. Ruff</i>



ITEM NO.	QTY REQD	FSCM NO.	PART OR IDENTIFYING NO.	NOMENCLATURE OR DESCRIPTION	TYPE	MATERIAL SPECIFICATION
----------	----------	----------	-------------------------	-----------------------------	------	------------------------

PARTS LIST

UNLESS OTHERWISE SPECIFIED DIMENSIONS ARE IN INCHES FRACTIONS DECIMALS ANGLES		CONTRACT NO.		DATE	
±	.XX ±	±	±	±	±
MATERIAL SEE PARTS LIST		DRAWN BY G. BISSONNETTE		93/08/10	
FINISH		CHECKED BY R. THIELE		93/08/16	
NEXT ASSY		APPROVED BY R. THIELE		93/08/16	
APPLICATION		APPROVED BY C. MENNERICK		93/08/17	



SMA LRA PLUG TO HP190
 FSCM NO. B 60637
 DWG NO. 20494-111
 SCALE 4/1
 SEM 02-08 (9/89)
 SHEET 1 OF 2

NOTE: UNLESS OTHERWISE SPECIFIED.

1. REF: XSMA-C-P-LRA-HP190-PF-SC-28-XXXXXXX.