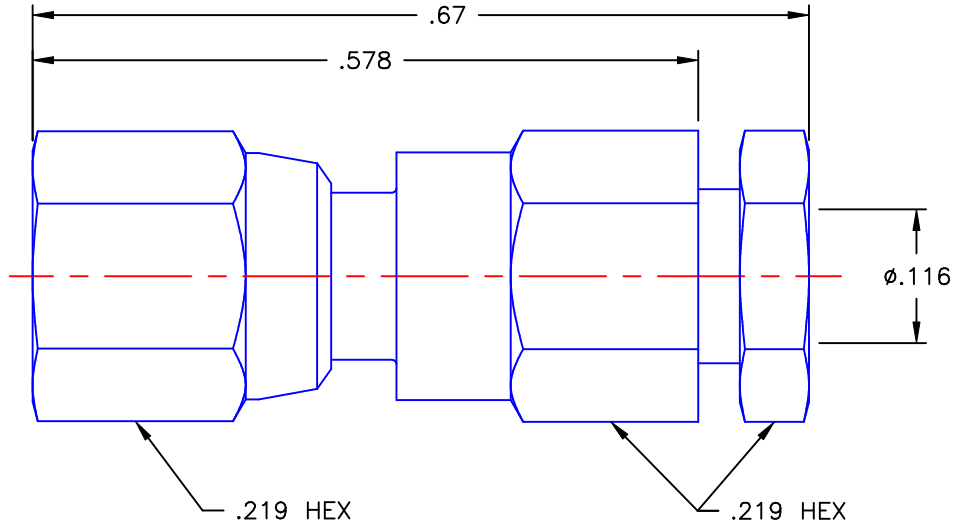


REVISIONS			
REV	DESCRIPTION	DATE	APPROVED
C	ECO #7657	07/20/09	D.N.



NOTES: CONFORMS TO MIL-C-39012/73-0004


MATERIALS:

1. INSULATORS = VIRGIN WHITE TEFLON PER ASTM D1710, GRADE 1, TYPE I, CLASS "B".
2. CONTACT = BERYLLIUM COPPER PER ASTM B196, ALLOY C17300, TEMPER TD04.
3. CRIMP SLEEVE = SEAMLESS LOWLEAD BRASS TUBE, ALLOY 330, SOFT ANNEAL TEMPER, .025/.060 GRAIN SIZE OR SEAMLESS COPPER TUBE PER ASTM B75, TYPE C12000, TEMPER: LIGHT ANNEAL O50 EXCEPT YIELD STRENGTH.
4. ALL OTHER METAL PARTS = BRASS PER ASTM B16, ALLOY C36000, TEMPER H02.

FINISHES:

1. BODY = GOLD PLATE PER MIL-G-45204, TYPE II, CLASS 1, GRADE C, OVER .00010 TO .00020 COPPER STRIKE PER MIL-C-14550.
2. CONTACT = GOLD PLATE PER MIL-G-45204, TYPE II, CLASS 1, GRADE C, OVER .00010 TO .00020 STRESS FREE SULFAMATE NICKEL PER QQ-N-290.
3. ALL OTHER METAL PARTS = GOLD PLATE PER MIL-G-45204, TYPE II, CLASS 0, GRADE C, OVER .00010 TO .00020 COPPER STRIKE PER MIL-C-14550.

Property of Radiall Incorporated  
This document cannot be reproduced or communicated to a third party without prior written permission of RADIALL Incorporated.

UNLESS OTHERWISE SPECIFIED DIMENSIONS ARE IN INCHES TOLERANCES ON	DWN:	DATE	 <b>APPLIED ENGINEERING PRODUCTS</b> 104 John W. Murphy Dr. New Haven, CT 06513
	D.N.	07/20/09	
DECIMAL	ANGLE	CHKD:	<b>SMC STRAIGHT FEMALE PLUG CLAMP TYPE FOR RG-316 &amp; SIMILAR CABLES</b>
		A.D.M.	
		APVD:	DATE
		J.M.	07/20/09
REFERENCE:	MATERIALS & FINISHES:		SIZE
ORIGINATOR: V.P.S. DATE: 02/24/94	SEE NOTES		FSCM NO.
			19505
			DWG. NO.
			1002-1551-903
			REV
			C
			SCALE 6:1
			THIRD ANGLE PROJECTION
			SHEET 1 OF 1

1002-1551-903