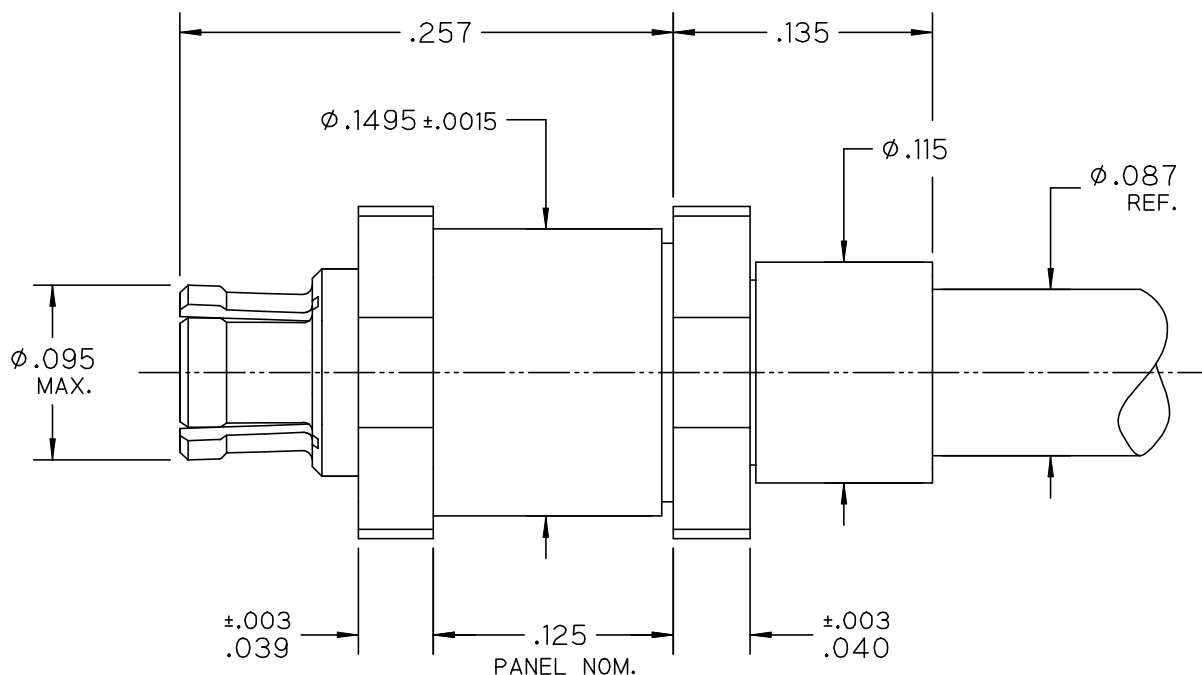
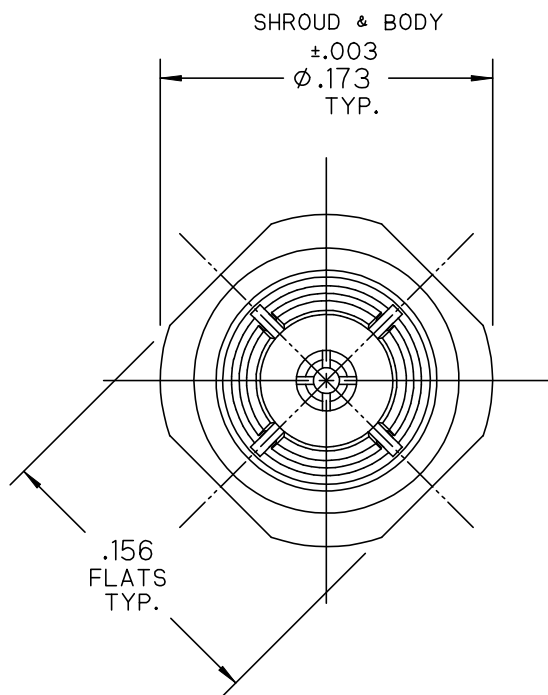


***** THIS DRAWING AND ITS CONTENTS ARE THE SOLE PROPERTY OF PRECISION CONNECTOR INC. AND ARE SUBJECT TO CHANGE WITHOUT NOTICE UNLESS OTHERWISE SPECIFIED *****

REV.	DESCRIPTION	DATE	BY	APPVD
A	INITIAL RELEASE	02/28/12	RDE	MJK



NOTES :

1.0 MATERIALS:

- 1.1 BODIES & CONTACT: BERYLLIUM COPPER PER ASTM-B196, UNS NO. C17300.
- 1.2 SHROUD: STEEL, CORROSION RESISTANT PER ASTM-A582, UNS. NO. S30300.
- 1.3 DIELECTRIC BEAD: POLYETHERIMIDE THERMOPLASTIC (ULTEM 1000) PER ASTM-D5205.

2.0 FINISH:

- 2.2 BODIES & CONTACT: GOLD PLATE PER ASTM-B488, TYPE II, CODE C, CLASS 1.27, 50 MICROINCHES MIN. THK. OVER ELECTROLYTIC NICKEL PLATE PER SAE-AMS QQ-N-290, CLASS 1, 50 MICROINCHES MIN. THK.
- 2.2 SHROUD: PASSIVATE PER SAE-AMS-2700.
- 2.3 INSULATOR: NONE.

3.0 SMPM SOCKET INTERFACE PER MIL-STD-348, FIGURE 328-1.



TOLERANCES UNLESS OTHERWISE SPECIFIED	DRAWN BY: RDE	OUTLINE DRAWING : SMPM SOCKET, BULKHEAD, DIRECT SOLDER FOR RG-405 CABLE				
	DATE: 02/28/12	CAGE CODE	SCALE	SHEET NO.	DRAWING NUMBER	REV
.XX	$\pm .02$	4MJR5	10:1	1 OF 1	3775-0L	A
.XXX	$\pm .005$					
.XXXX	$\pm .0005$					
ANGLES	$\pm 2^\circ$					