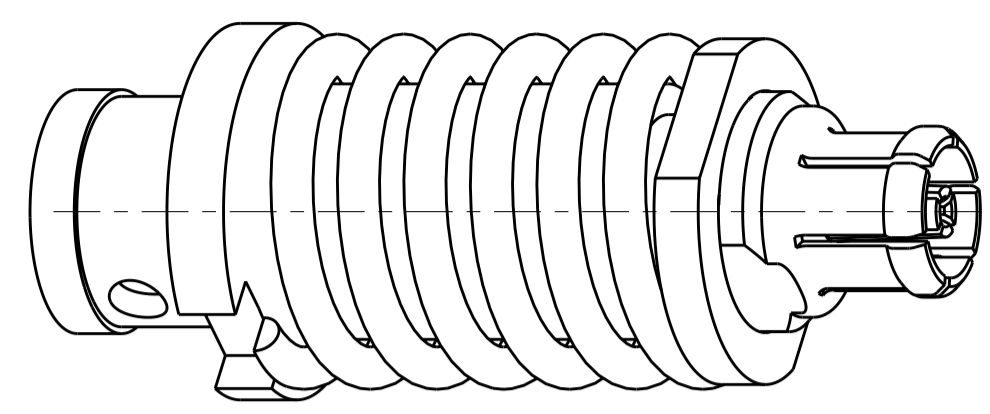


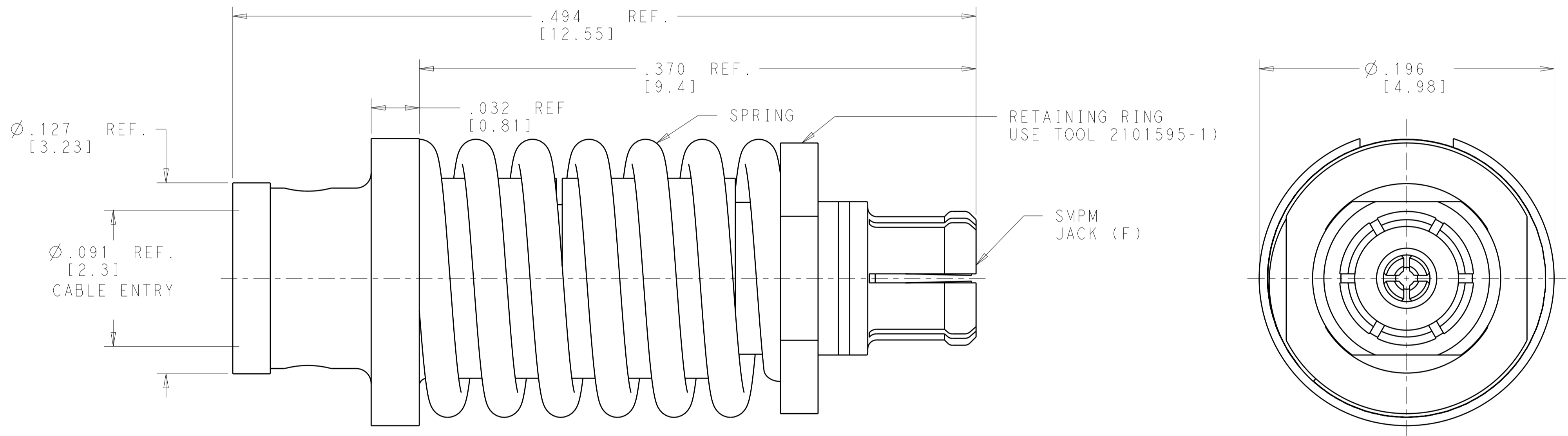
THIS DRAWING IS UNPUBLISHED. RELEASED FOR PUBLICATION  
 © COPYRIGHT BY ALL RIGHTS RESERVED.

REVISIONS				
P	LTR	DESCRIPTION	DATE	APVD
M		RELEASED PER ECO 11-014858	7-22-11	CT WM



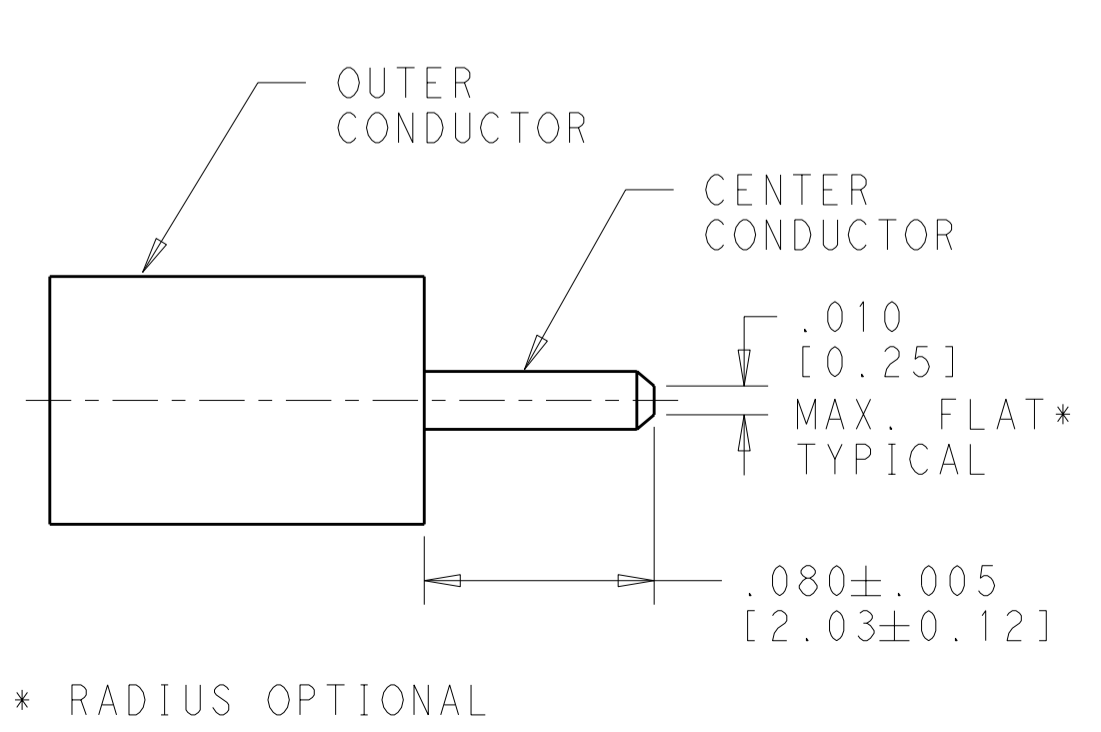
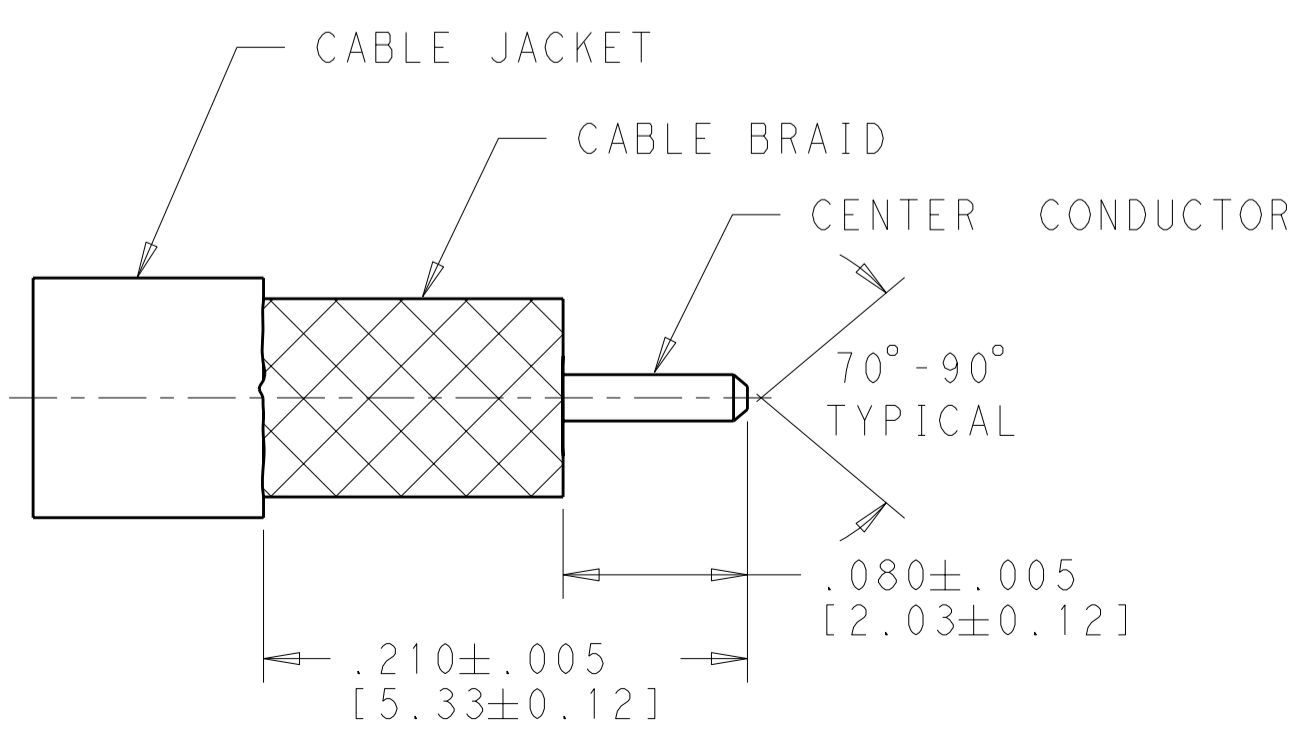
SCALE 10:1

- MATERIAL:**  
 BODY & CENTER CONTACT - BERYLIUM COPPER, ALLOY UNS C17300 CONDITION TDO4, PER ASTM B196  
 INSULATOR - TEFLON (PTFE) ROD, PER ASTM D 1710  
 RETAINING RING - STAINLESS STEEL, PER UNS S30200  
 SPRING - MUSIC WIRE, PER ASTM A228
- FINISH:**  
 BODY & CENTER CONTACT - GOLD PLATE, PER ASTM B488  
 OVER NICKEL PLATE PER SAE-ASM-QQ-N-290  
 RETAINING RING - PASSIVATED  
 SPRING - NICKEL PLATE, PER SAE-ASM-QQ-N-290
- SPRING FORCE:**  
 PRELOAD = 2.35 ±.25 LBF  
 FORCE AT .052 DEFLECTION = 3.60±.25 LBF  
 MINIMUM FULL DEFLECTION = .078 [2.0]



CABLE PREPARATION FOR  $\phi .086$  FLEXIBLE CABLES

CABLE PREPARATION FOR  $\phi .086$  SEMI-RIGID & CONFORMABLE CABLES



1996390-1  
 PART NUMBER

THIS DRAWING IS A CONTROLLED DOCUMENT.		DWN S.T. Morley 20NOV2007	<b>STE</b> TE Connectivity	
DIMENSIONS: INCHES [mm]		CHK S.T. Morley 26MAY2007		
TOLERANCES UNLESS OTHERWISE SPECIFIED:		APVD S.T. Morley 26MAY2007	NAME SMPM STRAIGHT CABLE JACK (F) FLOATING PANEL MOUNT - FOR USE WITH .085 DIA, AND SIMILAR CABLES	
0 PLC ±	1 PLC ±	PRODUCT SPEC	SIZE A200779	DRAWING NO C-1996390
2 PLC ±	3 PLC ±.005 [0.13]	APPLICATION SPEC 408-10373	RESTRICTED TO	
4 PLC ±	ANGLES ±1.0°	WEIGHT -	SCALE 20:1	SHEET 1 OF 1
MATERIAL 1	FINISH 2	CUSTOMER DRAWING	REV M	