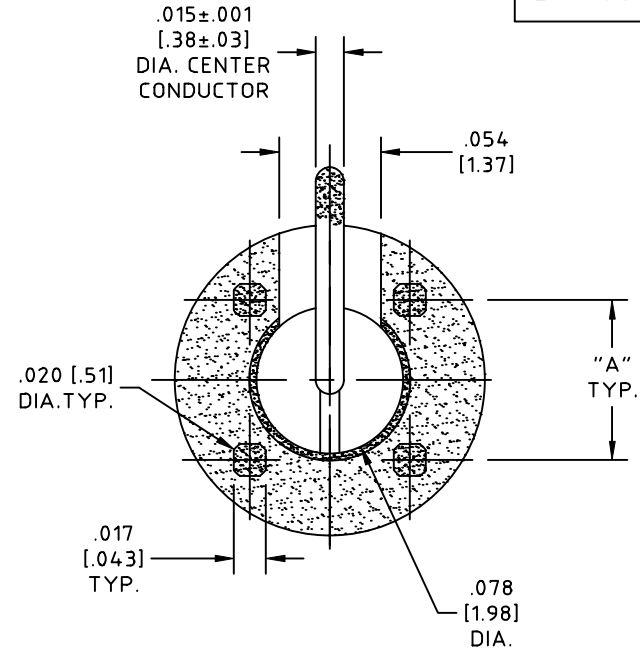
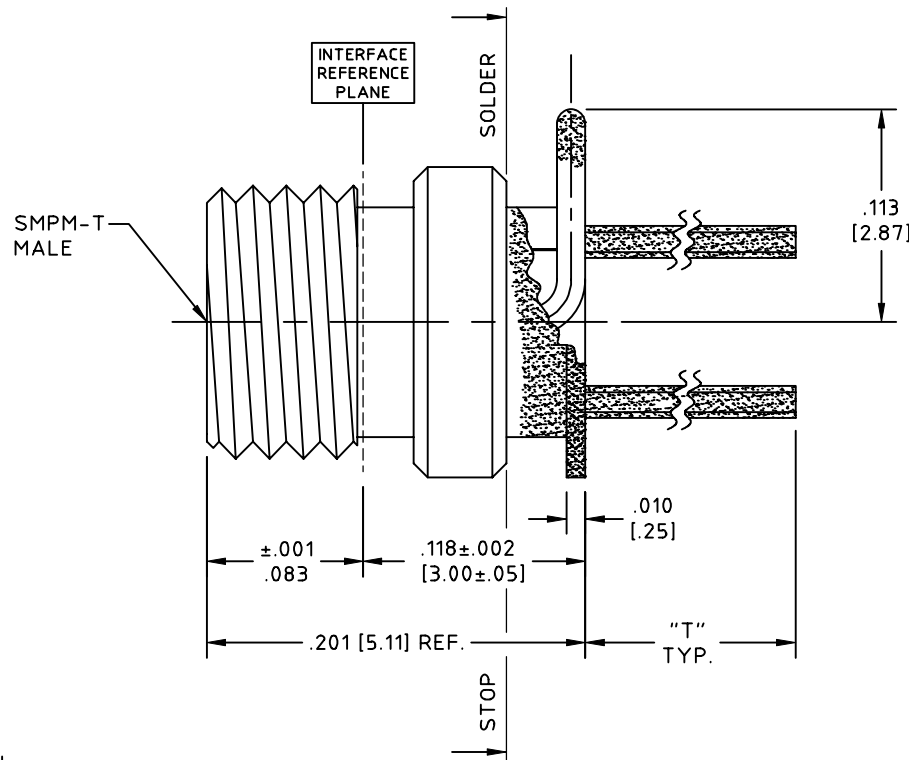


# CONTROL DRAWING

29976S1-X-XXX-DG

F



**NOTES:**

**1. DESCRIPTION**

CONNECTOR, (LAUNCHER) THRU THE BOARD MOUNT, THREADED ASTROLAB SMPM MALE.  
 FULL DETENT AND SMOOTH BORE OPTIONS AVAILABLE, SEE CHART FOR OPTIONS AND PART NUMBERS.  
 SOLDER COATED AS SHOWN, (BODY, PINS & CENTER CONDUCTOR) WITH SOLDER ALLOY Sn63Pb37A PER J-STD-006A.  
 SOLDER ALLOY BUILDUP .003 MAX. WALL THICKNESS FROM DIMENSIONS SHOWN.  
 SOLDER ICICLES MAY BE PRESENT ON SURFACES NOT INTERFERING WITH BOARD MOUNT.

**2. MATERIALS AND FINISHES**

BODY AND CENTER CONDUCTOR,  
 BERYLLIUM COPPER ALLOY PER ASTM B-196, UNS No. C17300, TEMPER TD04(H), GOLD PLATED .000050 IN (1.27 μm) MIN. THK. PER ASTM B-488, CODE C, TYPE II, CLASS 1.27 OVER  
 NICKEL PLATE, .000050 IN (1.27 μm) MIN. THK. PER SAE-AMS-QQ-N-290, TYPE 1.  
 DIELECTRIC,  
 POLYAMIDE-IMIDE (TORLON® 4203) ELECTRICAL GRADE, PER ASTM D-5204.

**NOTES CONTINUED:**

- 3. ELECTRICAL CHARACTERISTICS:  
 IMPEDANCE  
 50.0 Ohms NOMINAL.
- 4. INTERFACE MEETS MIL-STD-348.
- 5. OPERATING TEMPERATURE RANGE  
 -55° C TO +125° C

THRU THE BOARD MOUNT, SMPM-T MALE.			
OPTION	PART NUMBER	"T"	"A"
FULL DETENT	29976S1-2-140-DG	.140 [3.56]	.085 [2.16]
SMOOTH BORE	29976S1-4-140-DG	.140 [3.56]	.085 [2.16]
FULL DETENT	29976S1-2-165-DG	.165 [4.19]	.085 [2.16]
SMOOTH BORE	29976S1-4-165-DG	.165 [4.19]	.085 [2.16]
FULL DETENT	29976S1-2-200-DG	.200 [5.08]	.085 [2.16]
SMOOTH BORE	29976S1-4-200-DG	.200 [5.08]	.085 [2.16]

NOT RoHS COMPLIANT

UNLESS OTHERWISE SPECIFIED  
 CONCENTRICITY .004 T.I.R.  
 CORNERS AND FILLETS .005  
 MAX. RADIUS OR CHAMFER.  
 SURFACE FINISH 63 RMS  
 MICROINCHES OR BETTER.

X	±.030 [±0.762]
XX	±.015 [±0.381]
XXX	±.005 [±0.127]
XXXX	±.0005 [±0.013]
ANGLES	± 1°
DO NOT SCALE DRAWING	

NAME	DATE	
PREP. GSG	09/13/12	
ELEC.		SCALE 10:1
MECH. AW	09/13/12	
Q.C.		ANSI A



THIS DRAWING CONTAINS PATENTABLE AND PROPRIETARY INFORMATION. THE DESIGN CANNOT BE USED WITHOUT WRITTEN PERMISSION OF HUBER + SUHNER ASTROLAB.

CONNECTOR, THRU THE BOARD MOUNT, SMPM-T MALE, S.C.

REV.	DESCRIPTION	DATE	BY	APPROVED	THDS. TO BE IN ACCORD WITH U.S. DEPT. OF COMM. SCREW THD. STDS. FOR FEDERAL SERVICES 1950 SUPL. TO HANDBOOK H 28.	CODE IDENT.	DWG NO.	REV.	SHEET
F	PART NUMBERS ADDED	01/18/19	EF	GSG	16301	DWG-01014750	F	1	