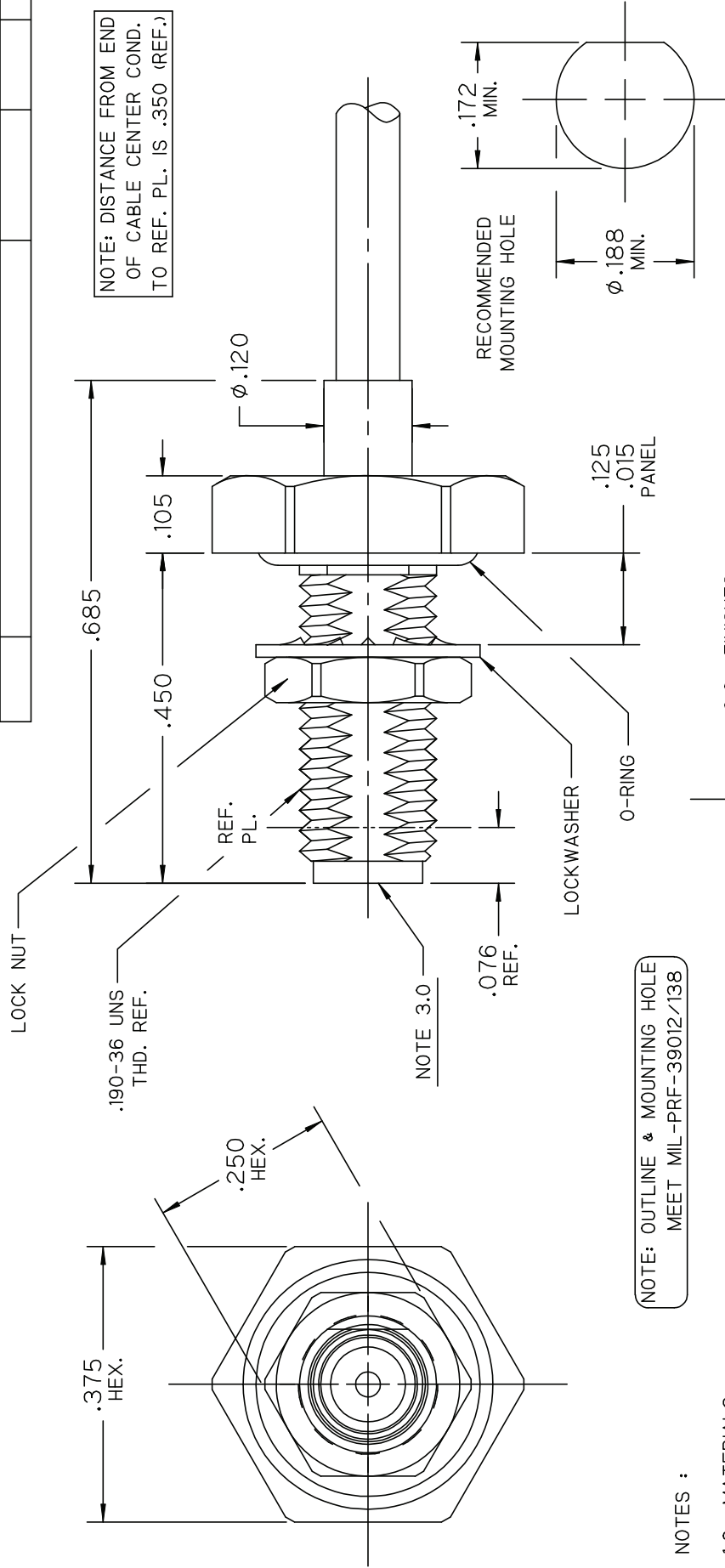


***** THIS DRAWING AND ITS CONTENTS ARE THE SOLE PROPERTY OF PRECISION CONNECTOR *****
 INC. AND ARE SUBJECT TO CHANGE WITHOUT NOTICE UNLESS OTHERWISE SPECIFIED

REV.	DESCRIPTION	DATE	BY	APPVD
A	INITIAL RELEASE	07/31/12	MJK	MJK



NOTES :

1.0 MATERIALS:

- 1.1 BODY & LOCK NUT: STEEL, CORROSION RESISTANT PER ASTM-A582, UNS NO. S30300.
- 1.2 CENTER CONTACT: BERYLLIUM COPPER PER ASTM-B196, UNS C17300.
- 1.3 INSULATOR: PTFE FLUOROCARBON PER ASTM-D1710.
- 1.4 LOCKWASHER: BRONZE ALLOY CDA-425.
- 1.5 O-RING: SILICONE RUBBER PER A-A-59588.

2.0 FINISHES:

- 2.1 BODY & CENTER CONTACT: GOLD PLATE PER ASTM-B488, 50 MICROINCHES MIN. THK. OVER ELECTROLYTIC NICKEL PLATE PER ASTM-B689, 50 MICROINCHES MIN. THK.
- 2.2 LOCKWASHER & LOCK NUT: GOLD PLATE PER ASTM-B488, 50 MICROINCHES MIN. THK. OVER ELECTROLYTIC NICKEL PLATE PER ASTM-B689, 50 MICROINCHES MIN. THK.
- 2.3 O-RING & DIELECTRICS: NONE.
- 3.0 SSMA JACK INTERFACE PER MIL-STD-348, FIGURE 319-2.



Precision Connector, Inc.

TOLERANCES UNLESS OTHERWISE SPECIFIED	DRAWN BY:	DESC.:	REV
.XX ± .02	MJK	SSMA BULKHEAD JACK, DIRECT SOLDER FOR RG-405 CABLE	A
.XXX ± .005	DATE: 07/31/12	SCALE	DRAWING NUMBER
.XXXX ± .0005	CAGE CODE	9:2	3798-01
ANGLES ± 2°	4MJR5	SHEET NO.	1 OF 1