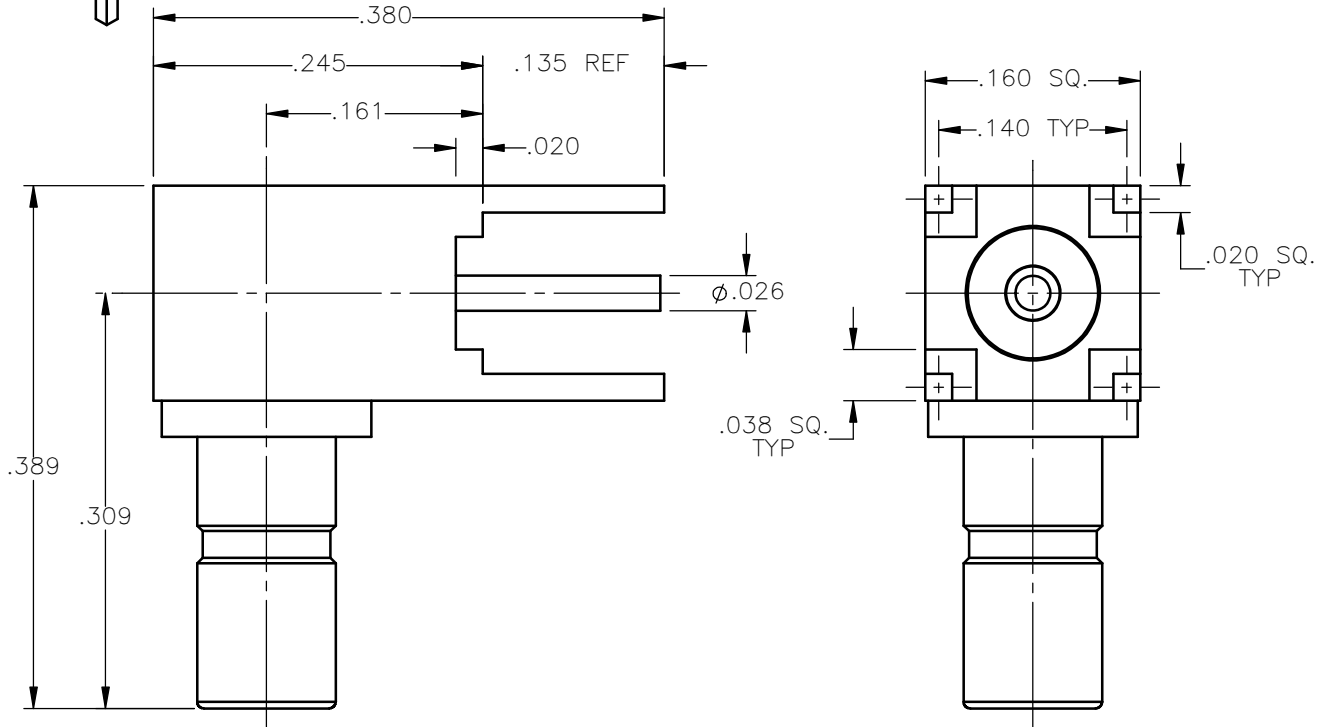
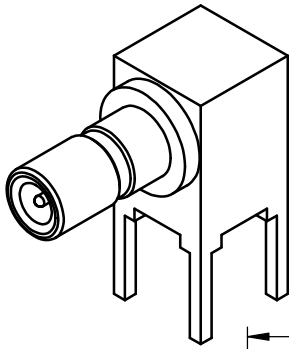


| REVISIONS | | | |
|-----------|-----------------|----------|----------|
| REV. | DESCRIPTION | DATE | APPROVED |
| A | INITIAL RELEASE | 05/16/14 | D.N. |



NOTES:

MATERIALS:

- CONTACTS = BERYLLIUM COPPER PER ASTM B196, ALLOY C17300, TEMPER TD04.
- INSULATORS = VIRGIN WHITE TEFLON PER ASTM D1710, GRADE 1, TYPE I, CLASS "B".
- ALL OTHER METAL PARTS = BRASS PER ASTM B16, ALLOY C36000, TEMPER H02.

FINISHES:

- CONTACTS = GOLD PLATE PER ASTM B488-01, TYPE II, 50 μ in MIN, GRADE C, OVER 100 TO 200 μ in STRESS FREE SULFAMATE NICKEL PER QQ-N-290.
- ALL OTHER METAL PARTS = GOLD PLATE PER ASTM B488-01, TYPE II, 30 μ in MIN, GRADE C, OVER 100 TO 200 μ in COPPER STRIKE PER MIL-C-14550.

UNLESS OTHERWISE SPECIFIED
DIMENSIONS ARE IN INCHES
TOLERANCES ON

DWN: DATE
D.N. 05/16/14

CHKD: DATE
J.S. 05/16/14

APVD: DATE
J.M. 05/16/14



Property of Radiall
This document cannot be reproduced or
communicated to a third party without prior
written permission of RADIALL.



SSMB RIGHT ANGLE MALE JACK
P.C.B. MOUNT RECEPTACLE

| DECIMAL | ANGLE |
|---------|-------|
| | |

REFERENCE:
20141382 PEN
ORIGINATED: D.N.
DATE: 05/16/14

MATERIALS & FINISHES:
SEE NOTES

| | | | |
|-----------|-------------------|--------------------------|--------------|
| SIZE A | FSCM NO. 19505 | DWG NO. 7210-1511-023 | REV A |
| SCALE 7:1 | | THIRD ANGLE PROJECTION | SHEET 1 OF 1 |

7210-1511-023