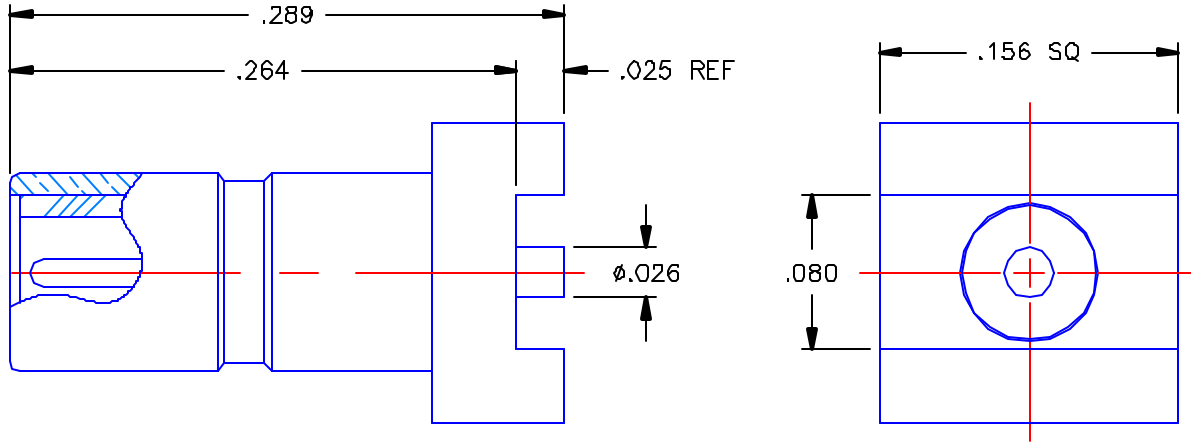
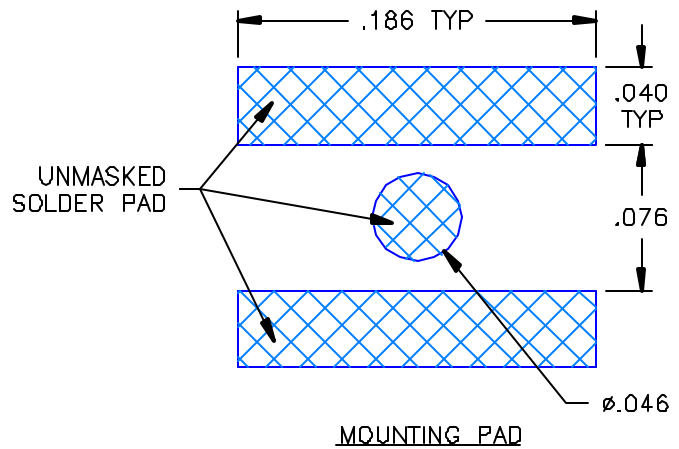


REVISIONS			
REV	DESCRIPTION	DATE	APPROVED
A	ECO #4359	12/06/01	A.D.M.



PROPRIETARY INFORMATION  
NOT TO BE RELEASED  
WITHOUT WRITTEN PERMISSION  
FROM AN AUTHORIZED  
REPRESENTATIVE OF  
APPLIED ENGINEERING PRODUCTS




NOTES:

MATERIALS:

1. BODY = BRASS PER ASTM B16, ALLOY C36000, TEMPER H02.
2. INSULATOR = VIRGIN WHITE TEFLON PER ASTM D1710, GRADE 1, TYPE I, CLASS "B".
3. CONTACT = BERYLLIUM COPPER PER ASTM B196, ALLOY C17300, TEMPER TD04.

FINISHES:

1. BODY = GOLD PLATE PER MIL-G-45204, TYPE II, CLASS 0, GRADE C, OVER .00010 TO .00020 COPPER STRIKE PER MIL-C-14550.
2. CONTACT = GOLD PLATE PER MIL-G-45204, TYPE II, CLASS 1, GRADE C, OVER .00010 TO .00020 STRESS FREE SULFAMATE NICKEL PER QQ-N-290.

UNLESS OTHERWISE SPECIFIED DIMENSIONS ARE IN INCHES TOLERANCES ON		DWN. A D.M.	DATE 12/06/01	 <b>APPLIED ENGINEERING PRODUCTS</b> 104 John W. Murphy Dr. New Haven, CT 06513
		CHKD: G.A.T.	DATE 12/06/01	
DECIMAL	ANGLE	APVD: D.J.C.	DATE 12/06/01	<b>SSMB STRAIGHT MALE JACK P.C.B. SURFACE MOUNT RECEPTACLE</b>
REFERENCE:		MATERIALS & FINISHES: SEE NOTES		
ORIGINATOR: D.N. DATE: 12/06/90				FSCM NO. 19505
				DWG NO. 7209-1511-015
				REV A
		SCALE 10:1		SHEET 1 OF 1

7209-1511-015