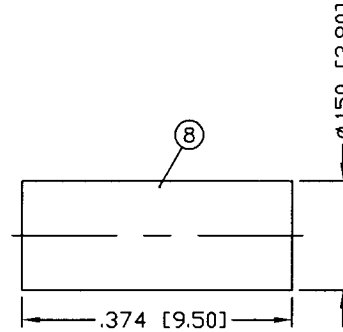
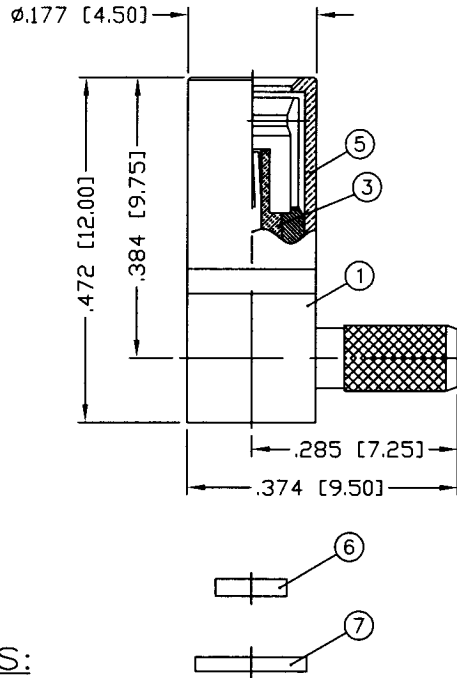


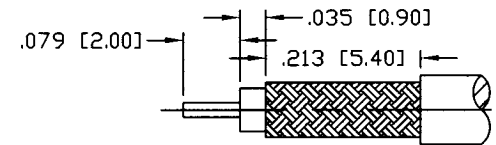
THIS DRAWING CONTAINS INFORMATION PROPRIETARY TO RF INDUSTRIES.  
 ANY UNAUTHORIZED USE OF THIS DRAWING IS EXPRESSLY PROHIBITED  
 WITHOUT WRITTEN PERMISSION FROM RF INDUSTRIES.  
 ANY VIOLATION IS PUNISHABLE UNDER U.S. COPYRIGHT LAWS.

ALL DIMENSIONS ARE REFERENCE ONLY

PART NO.		<b>RSB-710-1B</b>		
REV	DESCRIPTION	DWN	DATE	APPROVED
-	ENGINEERING RELEASE	JDM	3/13/03	JDMc
A	UPDATED CONNECTOR CONFIGURATION	JDM	11/20/03	JDMc



1. CRIMP FERRULE WITH  
 HEX CRIMP SIZE .128"



RECOMMENDED  
 CABLE STRIPPING DIMENSIONS

**SPECIFICATIONS:**

IMPEDANCE: 50 Ohms  
 FREQUENCY RANGE: 0-12.4 GHz  
 WORKING VOLTAGE: 250 V rms Max. @ Sea Level  
 CONTACT RESISTANCE: ≤ 5 m Ohm  
 INSULATION RESISTANCE: 1k M Ohms min.  
 TEMPERATURE RANGE: -55°C TO 155°C  
 FOR RG-174, 188, 188A, 316/U, ALPHA 9174, 9316,  
 BELDEN 8216, 83269, 83284, 84316 & TIMES LMR-100A CABLE

NOTE: ATTACH CABLE TO CONNECTOR BY  
 SOLDERING THE CABLE INNER CONDUCTOR  
 TO THE PIN SLOT INSIDE THE HOUSING

1	BODY	1	BRASS	GOLD, 3μ"	008974	
2	SSMB BODY	1	BRASS	GOLD, 3μ"		
3	INSULATOR	1	PTFE	WHITE		
4	CONTACT	1	Be.Cu.	GOLD, 30μ"		
5	SLEEVE	1	BRASS	GOLD, 3μ"		
6	INSULATOR	1	PTFE	WHITE		
7	PRESS CAP	1	BRASS	GOLD, 3μ"		
8	FERRULE	1	BRASS	GOLD, 3μ"		
9						
10						
11						
12						
13						
14						
#	DESCRIPTION	QTY	MATERIAL	FINISH	APPROVALS	DATE

UNLESS OTHERWISE SPECIFIED:  
 1. REMOVE ALL BURRS  
 2. BREAK ALL CORNERS & EDGES .005 R. MAX.  
 3. CHAMFER 1ST & LAST THREADS 45°  
 4. SURFACE ROUGHNESS 63 FINISH MIL-STD-10  
 5. DIAMETERS ON COMMON CENTERS TO BE CONCENTRIC WITHIN .002 T.I.R.  
 6. ALL DIMENSIONS ARE AFTER PLATING.

DIMENSIONS ARE IN INCHES  
 AND [MILLIMETERS]  
 UNLESS OTHERWISE NOTED  
 TOLERANCES ARE:  
 DECIMALS      DIAMETER  
 .XXX±.003 [.08]      .XXX±.001 [.03]  
 .XX±.005 [.13]      .XX±.003 [.08]

**RF connectors**  
 DIVISION OF RF INDUSTRIES, LTD.  
 7610 MIRAMAR RD  
 SAN DIEGO, CA 92126  
 (858) 549-6340  
 (858) 549-6345 FAX

**SSMB PLUG, CRIMP**

RIGHT ANGLE

SIZE A	CABLE GROUP B	DWG NO. RSB-710-1B	REV A
SCALE: NTS		CAD FILE OUTLINE	SHEET 1 OF 1