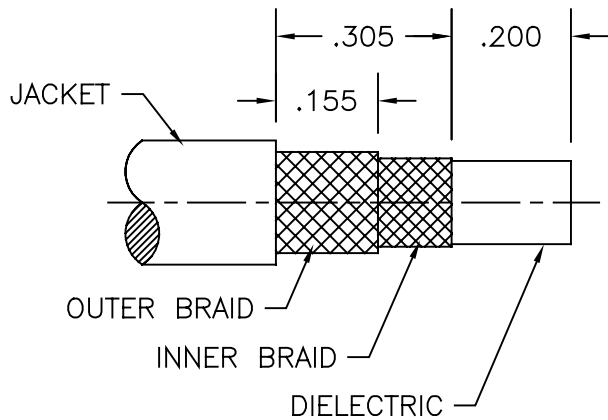
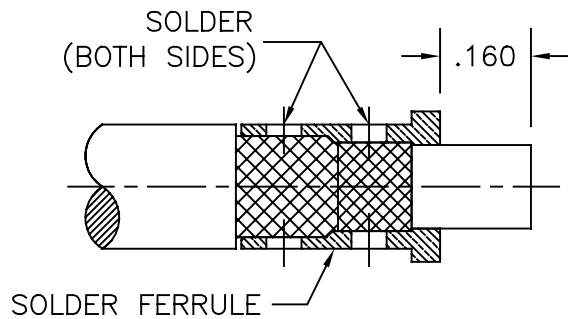


1.



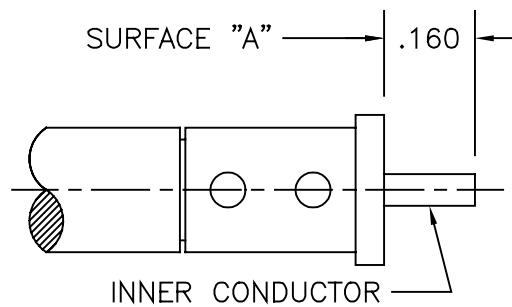
1. TRIM BRAID, DIELECTRIC, & INNER CONDUCTOR TO DIMENSIONS SHOWN.

2.



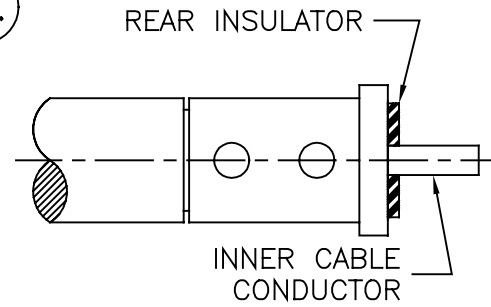
1. SLIDE SHRINK TUBING & CLAMP NUT ON CABLE  
2. SOLDER FERRULE AS SHOWN USING 60/40 SOLDER.

3.



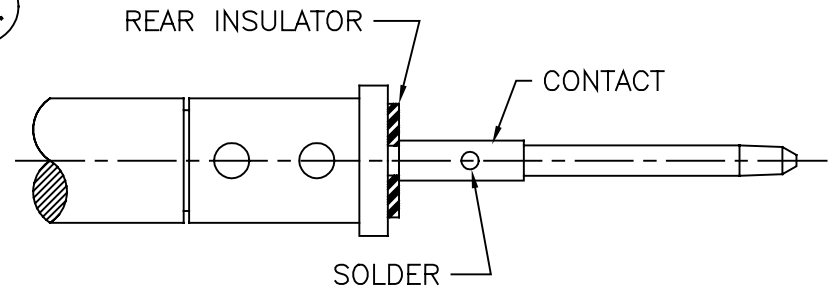
1. TRIM DIELECTRIC FLUSH TO SURFACE "A" & EXPOSE CABLES INNER CONDUCTOR.

4.



1. INSTALL REAR INSULATOR.

5.



1. BOTTOM CONTACT AGAINST REAR INSULATOR AS SHOWN ABOVE.  
2. SOLDER CONTACT AS SHOWN USING 60/40 SOLDER.

6.

INSTALL CONTACT / FERRULE SUBASSEMBLY INTO THE BACK OF CONNECTOR. TIGHTEN CLAMP NUT TO 15 INCH LBS. SLIDE SHRINK TUBING OVER REAR OF CLAMP NUT & APPLY HEAT TO SHRINK

USED ON

46-000-1516-02



SRI CONNECTOR GAGE CO.  
751 NORTH DRIVE  
MELBOURNE FL. 32934

DIMENSIONS ARE IN INCHES  
TOLERANCES

DECIMALS	FRACTIONAL	ANGULAR
.X ±.030	± 1/64	.° ±1°0'
.XX ±.015		.X°X' ±15'
.XXX ±.005		

TITLE

ASSEMBLY INSTRUCTIONS  
TNC PLUG TO  
SFT-316

DRAWN LMW

DATE

SIZE

A

FSCM NO.

OHMO1

SHEET

1

USED ON

46-000-1516-02