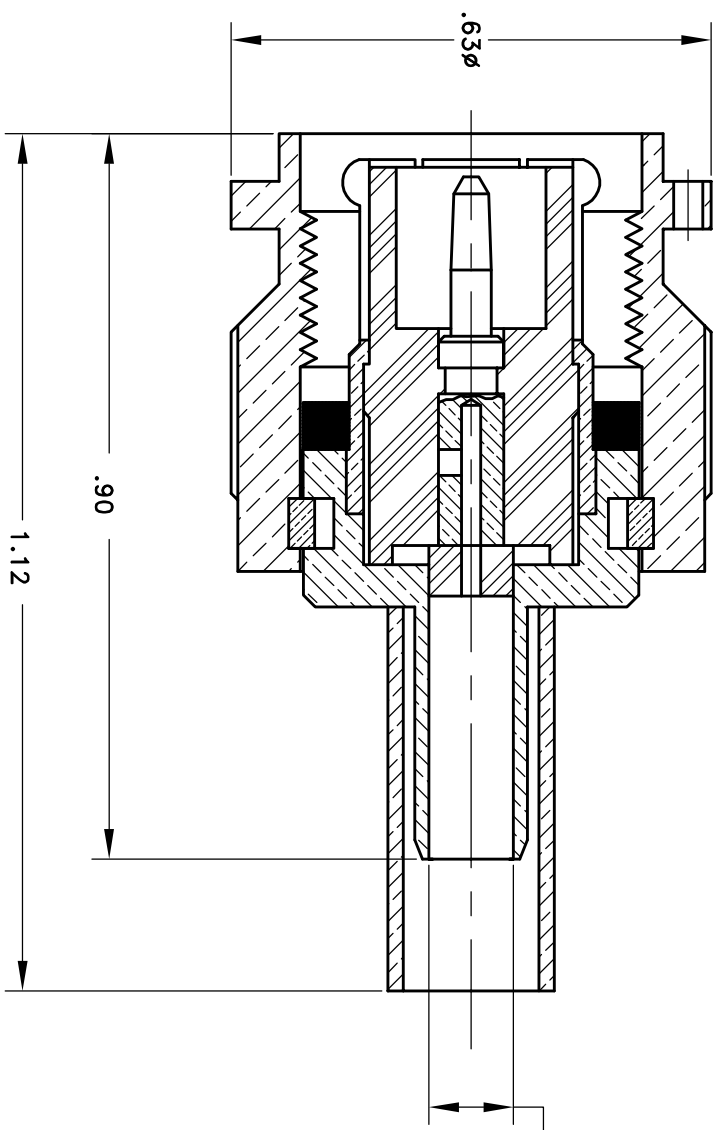


DASH #	BODY MAT'L	BODY FINISH	CONTACT MAT'L	CONTACT FINISH	CABLE:
-10	BRASS	TRI-M3	BRASS	GOLD	LMR240



- A) ELECTRICAL SPECS:
- 1) VOLTAGE RATING/500V RMS.
  - 2) IMPEDANCE/50 OHMS.
  - 3) DIELECTRIC WITHSTANDING VOLTAGE/1,500VRMS.
  - 4) INSULATION RESISTANCE/5,000 MEGOHMS MIN.
  - 5) FREQUENCY RANGE/0 TO 11 GHZ.

B) TEMPERATURE RANGE/-65° TO +165°C

C) CONTACT SHOWN INSTALLED FOR REFERENCE ONLY. CONTACT TO BE SHIPPED LOOSE ALONG WITH CONNECTOR.

D) INTERFACE PER MIL-C-39012C.

THIS DOCUMENT CONTAINS PROPRIETARY INFORMATION & MAY NOT BE REPRODUCED OR DISCLOSED TO OTHERS WITHOUT WRITTEN CONSENT FROM CONNECTRONICS, INC.



FSCM 43608

TOLERANCES UNLESS OTHERWISE SPECIFIED

2 PL DEC ±.020

3 PL DEC ±.005

ANG. DIM ±1/2°

DRAWING NO. 44-216

SHT 1 OF 1

REV LEVEL	-K-
REVISIONS	

DWG BY: RLC	DATE: 6/15/10
APVD BY:	SCALE:
MATERIAL:	
FINISH:	
DESCRIPTION: TNC PLUG, SHORT CRIMP	