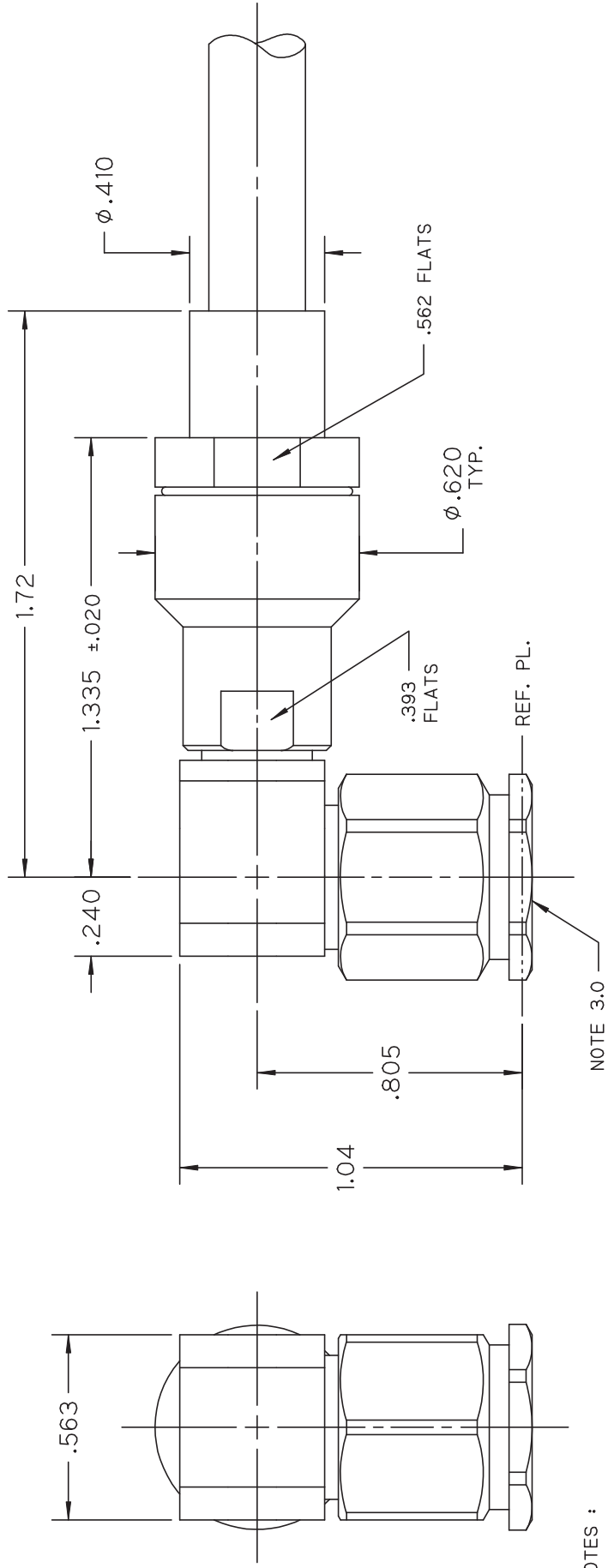


***** THIS DRAWING AND ITS CONTENTS ARE THE SOLE PROPERTY OF PRECISION CONNECTOR *****
 INC. AND ARE SUBJECT TO CHANGE WITHOUT NOTICE UNLESS OTHERWISE SPECIFIED

REV.	DESCRIPTION	DATE	BY	APPVD
A	INITIAL RELEASE	02/23/11	RDE	MJK



NOTES :

1.0 MATERIALS:

- 1.1 BODY, COUPLING & CLAMP NUTS: STEEL, CORROSION RESISTANT PER ASTM-A582, UNS NO. S30300.
- 1.2 CENTER COND.: BERYLLIUM COPPER PER ASTM-B196, UNS C17300.
- 1.3 SOLDER FERRULE: BRASS PER ASTM-B16, UNS C36000.
- 1.4 LOCK RING: BERYLLIUM COPPER PER ASTM-B197, UNS C17200.
- 1.5 GASKET: SILICONE RUBBER PER A-A-59588.
- 1.6 MITER INSULATOR(S): PTFE FLUOROCARBON PER ASTM-D1710, TYPE I, GRADE 1, CLASS A.
- 1.7 DIE BEAD(S): POLYETHERIMIDE THERMOPLASTIC (ULTEM 1000) PER ASTM-D5205.

2.0 FINISHES:

- 2.1 CENTER CONTACT & SOLDER FERRULE: GOLD PLATE PER ASTM-B488, 50 MICRONS MIN. THK. OVER ELECTROLYTIC NICKEL PLATE PER ASTM-B689 50 MICRONS MIN. THK.
- 2.2 BODY, COUPLING & CLAMP NUTS: PASSIVATE PER SAE-AMS-2700.
- 2.3 GASKET, LOCK RING & DIELECTRICS: NONE.
- 3.0 INTERFACE: TNCA PLUG PER MIL-STD-348, FIGURE 313-3. COUPLING NUT HAS ϕ .032 MIN. LOCKWIRE HOLES (3) PLACES.



Precision Connector, Inc.

TOLERANCES UNLESS OTHERWISE SPECIFIED	DRAWN BY: RDE	DESC.: TNCA, RT. ANGLE PLUG, SOLDER CLAMP FOR DYNAWAVE DF218 CABLE, L/W HOLES	REV
.XX ± .02	DATE: 02/23/11	SCALE	DRAWING NUMBER
.XXX ± .005	CAGE CODE	2:1	3532-01
.XXXX ± .0005	4MJR5	SHEET NO.	1 OF 1
ANGLES ± 2°			A