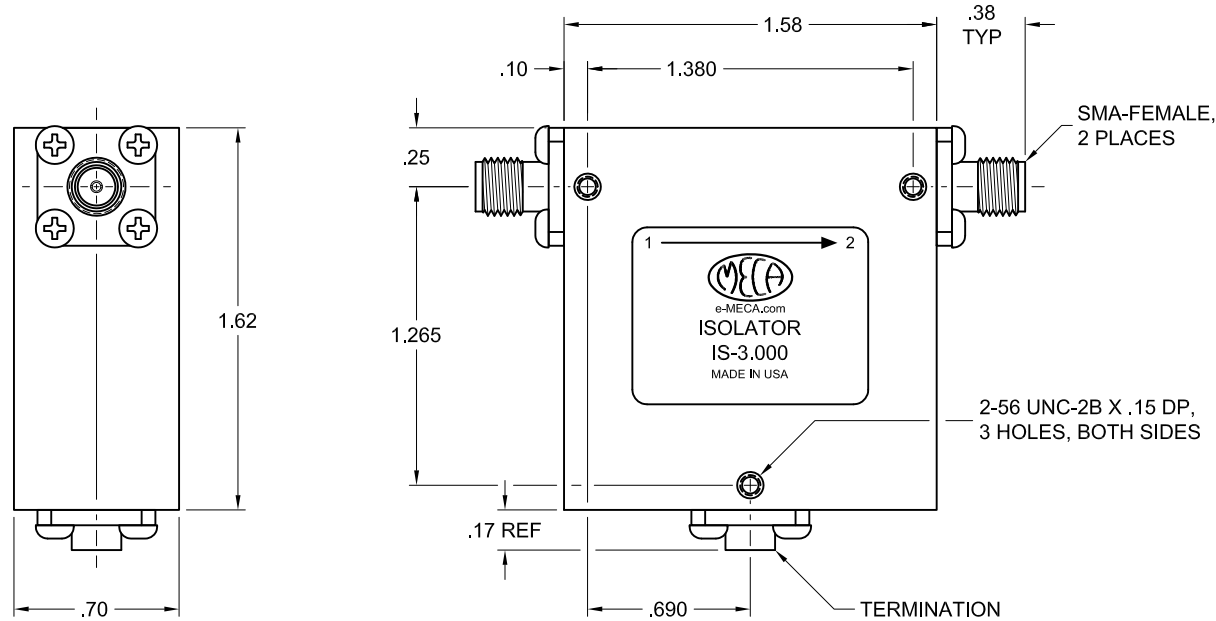


ELECTRICAL SPECIFICATIONS

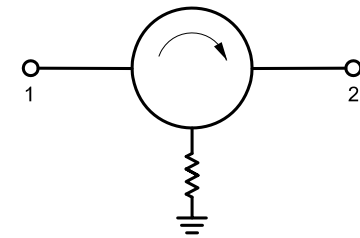
FREQUENCY RANGE (GHz): 2.000 - 4.000
 IMPEDANCE: 50 Ohms
 VSWR: 1.25:1 TYP/1.30:1 MAX
 INSERTION LOSS (dB): 0.40 TYP/0.50 MAX
 ISOLATION (dB): 20 TYP/18.5 MIN
 POWER (AVG): 2 W


MECHANICAL SPECIFICATIONS

CONNECTORS: SMA-FEMALE, STAINLESS STEEL, PASSIVATE
 CONTACT PINS: BERYLLIUM COPPER, GOLD PLATE
 OPERATING TEMPERATURE: 0°C TO +50°C
 WEIGHT (NOMINAL): 3.5 oz.



SCHEMATIC:



						MATERIAL: SEE ABOVE	UNLESS OTHERWISE SPECIFIED, DIMENSIONS ARE IN INCHES		 ELECTRONICS, INC. DENVER, NEW JERSEY e-MECA.com
E		SEE DCN #130711-2	07/12/13	NL	RR	FINISH: SEE ABOVE	TOLERANCES 2 PLACES: ±.03 3 PLACES: ±.010 ANGLES: N/A		
D		SEE DCN #100527	06/04/10	RP	EB	DRAWN: NL	DATE: 07/26/05	TIR: N/A	CAGE CODE NO. 22424
C		SEE DCN #080505-5	05/08/08		RR	APPROVED: JL	DATE: 07/26/05	SCALE: NTS	
B		SEE DCN #063209-2	09/20/06		RR			SIZE A	REV E
A		REDRAWN	07/26/05		JL				
LTR	PG	DESCRIPTION	DATE	DR	APP			SHEET: 1 OF 1	