

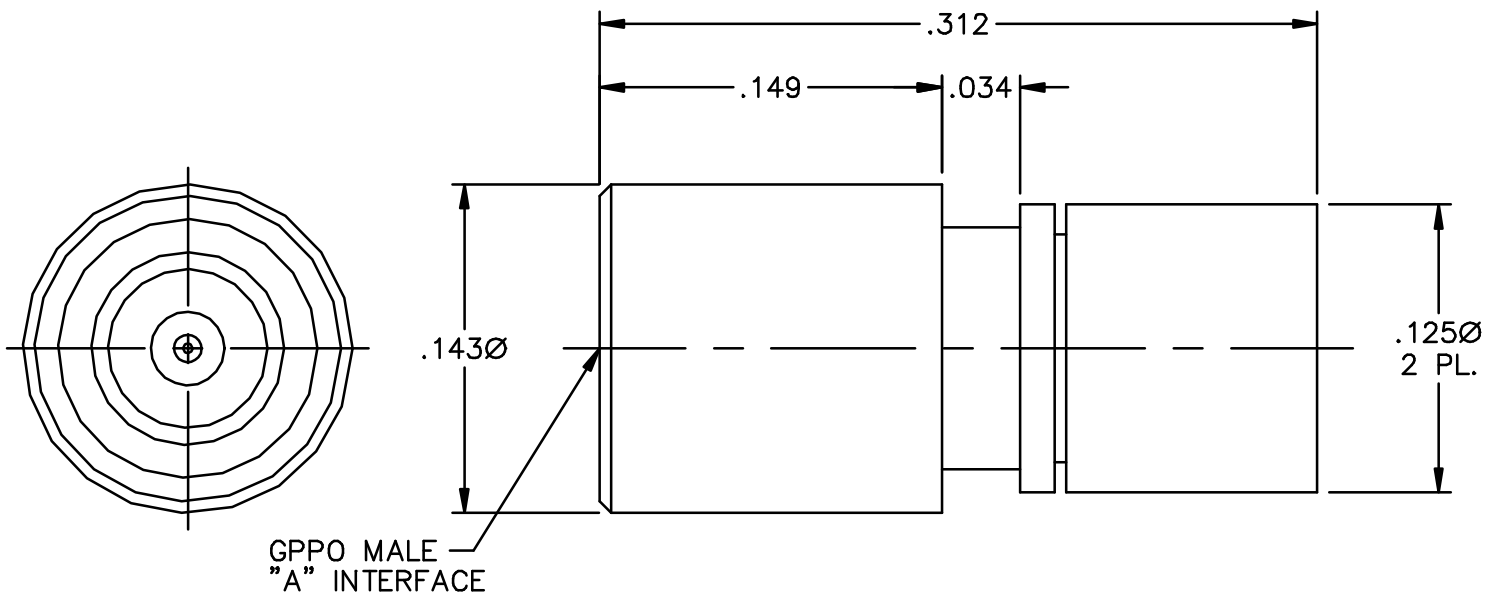
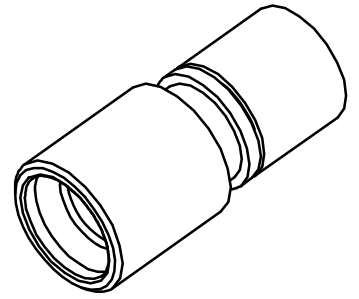
CATALOG NUMBER	"A" INTERFACE
B055-A13-01	FULL DETENT
B055-A15-01	SMOOTH BORE

MATERIAL AND FINISH

CENTER CONTACT, END CAP AND HOUSING: BeCu; GOLD PLATE 50-100 MICROINCHES OVER NICKEL PLATE 50 MICROINCHES MIN.

DIELECTRIC: VIRGIN PTFE

MAX. AVERAGE POWER: .25 WATTS



This drawing and any data contained herein is the property of Corning Gilbert Inc., and constitutes and contains proprietary and confidential information. Neither receipt nor possession of this drawing confers or transfers any right to duplicate, use or disclose any information contained herein except as expressly authorized by Corning Gilbert Inc.

GPPO MALE LOAD
(TAB DETENT)

IDENT CODE:
82316

REVISION: F

Corning Gilbert Inc.

SOURCE FILE: SK-1861

DWG. NO.: OL-B055-A1X-01

ASSY. PROC.: -