

REV	DESCRIPTION	ECO #	DATE	APPROVED
A	REDRAWN IN SOLIDWORKS	14-256	7/8/14	T. KUHN
B	MODIFIED MARKING ORIENTATION	14-411	12/15/14	T. KUHN
C	REVISED LENGTH TOL. MARKING LOC	15-344	12/2/15	T. KUHN

REV	DESCRIPTION	ECO #	DATE	APPROVED
A	REDRAWN IN SOLIDWORKS	14-256	7/8/14	T. KUHN
B	MODIFIED MARKING ORIENTATION	14-411	12/15/14	T. KUHN
C	REVISED LENGTH TOL. MARKING LOC	15-344	12/2/15	T. KUHN

REV	DESCRIPTION	ECO #	DATE	APPROVED
A	REDRAWN IN SOLIDWORKS	14-256	7/8/14	T. KUHN
B	MODIFIED MARKING ORIENTATION	14-411	12/15/14	T. KUHN
C	REVISED LENGTH TOL. MARKING LOC	15-344	12/2/15	T. KUHN

REV	DESCRIPTION	ECO #	DATE	APPROVED
A	REDRAWN IN SOLIDWORKS	14-256	7/8/14	T. KUHN
B	MODIFIED MARKING ORIENTATION	14-411	12/15/14	T. KUHN
C	REVISED LENGTH TOL. MARKING LOC	15-344	12/2/15	T. KUHN

ELECTRICAL

FREQUENCY RANGE _____ DC - 18 GHz

VSWR
 DC - 4 GHz _____ 1.05
 4 - 8 GHz _____ 1.10
 8 - 12.4 GHz _____ 1.15
 12.4 - 18 GHz _____ 1.20

IMPEDANCE _____ 50 OHMS

TEMPERATURE RANGE (°C) _____ -55 TO +125

POWER (AVG) _____ 2 WATTS
 POWER DERATES LINEARLY FROM +45°C TO <10% @ +125°C

POWER (PEAK) _____ 500 WATTS
 (<5 μ SEC PW, <1% DUTY CYCLE)

MECHANICAL

INNER CONDUCTOR: _____ BERYLLIUM COPPER PER ASTM B196 & B197.

OUTER CONDUCTOR: _____ STEEL, CORROSION RESISTANT PER ASTM A484 & A582, CLASS 303, COND. A.

DIELECTRIC: TEFLON PER ASTM D1710.

FINISH

INNER CONDUCTOR: _____ GOLD PLATED PER MIL-PRF-39012.

HOUSING/COUPLING NUT FINISH PER SUFFIX (REPLACING -0X IN P/N)
 -00 OUTER CONDUCTOR/NUT GOLD PLATED
 -02 OUTER CONDUCTOR/NUT PASSIVATED SS
 -01 OUTER CONDUCTOR GOLD PLATED, NUT PASSIVATED SS

ADD C25 FOR 2-2.5" CHAIN ATTACHED

CONNECTOR INTERFACE COMPLIES WITH MIL-PRF-39012 AND MIL-STD-348 FOR SMA MATING CHARACTERISTICS.

MARKING

PART LOOKS LIKE PRODUCT IMAGE ABOVE.
 PART MARKING ORIENTATION AND FORMAT AS SHOWN.
 MARKING TO BE AS LARGE AS POSSIBLE, CLEAR, READABLE, AND A BLACK COLOR.
 REPLACE XX WITH APPROPRIATE HOUSING/COUPLING NUT FINISH ON WORK ORDER.
 YYYY EQUALS DATE CODE.

SPECIFICATIONS

FREQUENCY RANGE _____ DC - 18 GHz

VSWR
 DC - 4 GHz _____ 1.05
 4 - 8 GHz _____ 1.10
 8 - 12.4 GHz _____ 1.15
 12.4 - 18 GHz _____ 1.20

IMPEDANCE _____ 50 OHMS

TEMPERATURE RANGE (°C) _____ -55 TO +125

POWER (AVG) _____ 2 WATTS
 POWER DERATES LINEARLY FROM +45°C TO <10% @ +125°C

POWER (PEAK) _____ 500 WATTS
 (<5 μ SEC PW, <1% DUTY CYCLE)

MECHANICAL

INNER CONDUCTOR: _____ BERYLLIUM COPPER PER ASTM B196 & B197.

OUTER CONDUCTOR: _____ STEEL, CORROSION RESISTANT PER ASTM A484 & A582, CLASS 303, COND. A.

DIELECTRIC: TEFLON PER ASTM D1710.

FINISH

INNER CONDUCTOR: _____ GOLD PLATED PER MIL-PRF-39012.

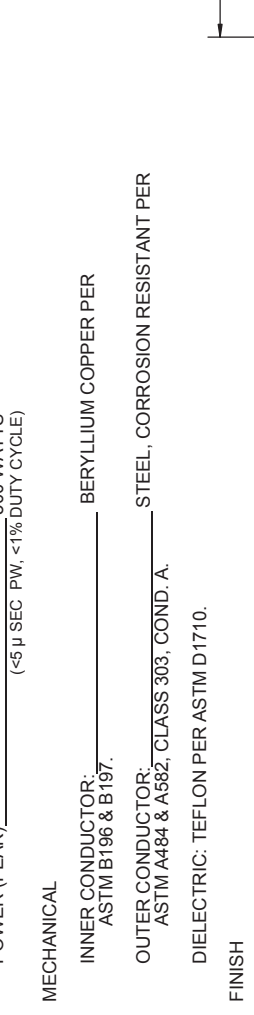
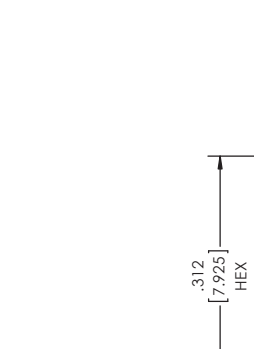
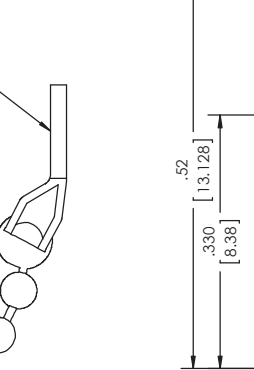
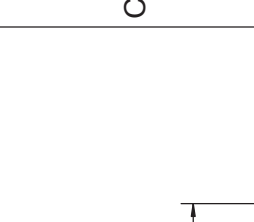
HOUSING/COUPLING NUT FINISH PER SUFFIX (REPLACING -0X IN P/N)
 -00 OUTER CONDUCTOR/NUT GOLD PLATED
 -02 OUTER CONDUCTOR/NUT PASSIVATED SS
 -01 OUTER CONDUCTOR GOLD PLATED, NUT PASSIVATED SS

ADD C25 FOR 2-2.5" CHAIN ATTACHED

CONNECTOR INTERFACE COMPLIES WITH MIL-PRF-39012 AND MIL-STD-348 FOR SMA MATING CHARACTERISTICS.

MARKING

PART LOOKS LIKE PRODUCT IMAGE ABOVE.
 PART MARKING ORIENTATION AND FORMAT AS SHOWN.
 MARKING TO BE AS LARGE AS POSSIBLE, CLEAR, READABLE, AND A BLACK COLOR.
 REPLACE XX WITH APPROPRIATE HOUSING/COUPLING NUT FINISH ON WORK ORDER.
 YYYY EQUALS DATE CODE.



QTY.	PART NUMBER	DESCRIPTION	ITEM NO.
X	2001-7010-0X	TERMINATION, SMA, MALE, DC-18GHZ, 2 WATTS AVG., 500 WATTS PEAK	
1	2001-7000-0X88	ASSEMBLY, TERMINATION, SMA, MALE, DC-18GHZ, 2 WATTS AVG., 500 WATTS PEAK UNMARKED	1

UNLESS OTHERWISE SPECIFIED	DRAWN	DATE
MCCORMICK	MCCORMICK	7/8/14
DATE	MCCORMICK	7/8/14
DATE	MCCORMICK	7/8/14
DATE	T. KUHN	7/8/14

TERMINATION, SMA, MALE, DC-18GHZ, 2 WATTS AVG., 500 WATTS PEAK	ITEM NO.
ASSEMBLY, TERMINATION, SMA, MALE, DC-18GHZ, 2 WATTS AVG., 500 WATTS PEAK UNMARKED	1

TERMINATION, SMA, MALE, DC-18GHZ, 2 WATTS AVG., 500 WATTS PEAK	ITEM NO.
ASSEMBLY, TERMINATION, SMA, MALE, DC-18GHZ, 2 WATTS AVG., 500 WATTS PEAK UNMARKED	1

TERMINATION, SMA, MALE, DC-18GHZ, 2 WATTS AVG., 500 WATTS PEAK	ITEM NO.
ASSEMBLY, TERMINATION, SMA, MALE, DC-18GHZ, 2 WATTS AVG., 500 WATTS PEAK UNMARKED	1

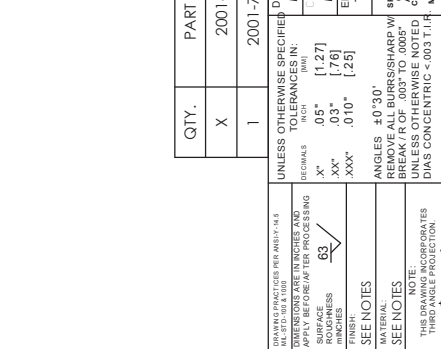
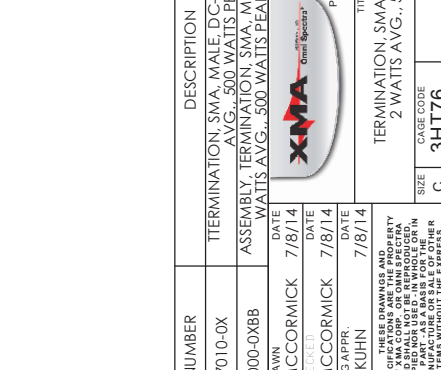
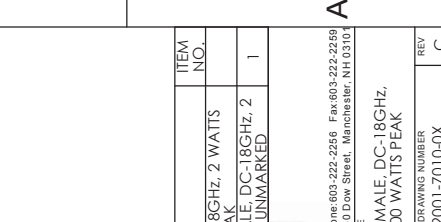
QTY.	PART NUMBER	DESCRIPTION	ITEM NO.
X	2001-7010-0X	TERMINATION, SMA, MALE, DC-18GHZ, 2 WATTS AVG., 500 WATTS PEAK	
1	2001-7000-0X88	ASSEMBLY, TERMINATION, SMA, MALE, DC-18GHZ, 2 WATTS AVG., 500 WATTS PEAK UNMARKED	1

UNLESS OTHERWISE SPECIFIED	DRAWN	DATE
MCCORMICK	MCCORMICK	7/8/14
DATE	MCCORMICK	7/8/14
DATE	MCCORMICK	7/8/14
DATE	T. KUHN	7/8/14

TERMINATION, SMA, MALE, DC-18GHZ, 2 WATTS AVG., 500 WATTS PEAK	ITEM NO.
ASSEMBLY, TERMINATION, SMA, MALE, DC-18GHZ, 2 WATTS AVG., 500 WATTS PEAK UNMARKED	1

TERMINATION, SMA, MALE, DC-18GHZ, 2 WATTS AVG., 500 WATTS PEAK	ITEM NO.
ASSEMBLY, TERMINATION, SMA, MALE, DC-18GHZ, 2 WATTS AVG., 500 WATTS PEAK UNMARKED	1

TERMINATION, SMA, MALE, DC-18GHZ, 2 WATTS AVG., 500 WATTS PEAK	ITEM NO.
ASSEMBLY, TERMINATION, SMA, MALE, DC-18GHZ, 2 WATTS AVG., 500 WATTS PEAK UNMARKED	1



Phone: 603-222-2266 Fax: 603-222-2269
 100 DOW STREET, MERRIMACK, NH 03001

TERMINATION, SMA, MALE, DC-18GHZ, 2 WATTS AVG., 500 WATTS PEAK

3HT76

2001-7010-0X

SHEET 1 OF 1