

5

4

3

2

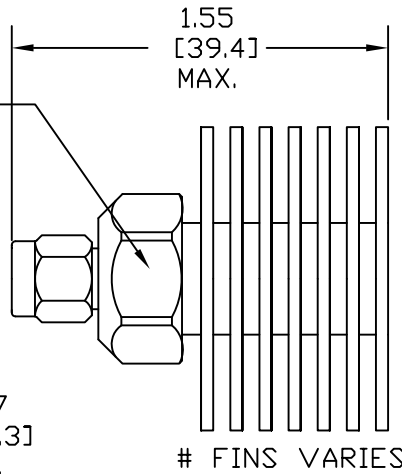
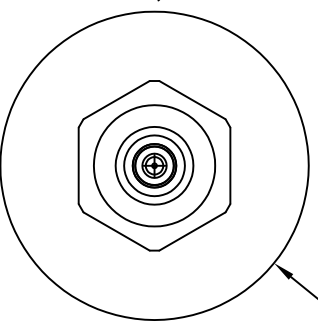
1

**PRODUCTION
RELEASE**

REVISIONS
NOTE:
THIS DRAWING INCORPORATES
THIRD ANGLE PROJECTION.
D INTERPRET IAW ANSI Y14.5-1992

REVISIONS			
LTR	DESCRIPTION	DATE	APPROVED
D	REDRAWN INTO CAD - NEW TITLEBLOCK	01/11/2008	D. SAUNDERS

CONFIGURATION WILL VARY
HEX, FLATS OR ROUND



NOTES:

- 1.0 MATERIALS:
CONNECTOR HOUSING: STAINLESS STEEL
DIELECTRIC: TEFLON
MALE CONTACT: BeCu
HEAT SINK: ALUMINUM
- 2.0 FINISH:
CONNECTOR HOUSING: PASSIVATED SS
MALE CONTACT: GOLD PLATED IAW
ASTM-B488
HEAT SINK: BLACK ANODIZED AL.
- 3.0 ELECTRICAL SPECIFICATIONS:
POWER: 10 WATTS RMS OR AVERAGE
<2.5 kW PEAK (5uS PULSE WID.,) DUTY
CYCLE <0.25%.
POWER DERATES LINEARLY FROM 100% =<25°C
TO 10% AT +125°C
VSWR DC-18 GHZ 1.05 + 0.015(f)
DC RESISTANCE 50 OHMS NOM. (TYP ±5.0%)
TEMPERATURE OPERATION -65° TO 125°C

DRAWING PRACTICES PER ANSI-Y-14.5 MIL-STD-100 & 1000	
DIMENSIONS ARE IN INCHES AND APPLY BEFORE/AFTER PROCESSING	
SURFACE ROUGHNESS	63 ✓
FINISH	SEE NOTES
MATERIAL	SEE NOTES

UNLESS OTHERWISE SPECIFIED		
DECIMALS	TOLERANCES IN:	
	INCH	MM
.X"	.05"	[1.27]
.XX"	.03"	[.76]
.XXX"	.015	[.38]
.XXXX"	ANGLES ±2°	
REMOVE ALL BURRS/SHARP W/ BREAK / R OF .003" TO .0005" UNLESS OTHERWISE NOTED DIAS CONCENTRIC <.003 T.I.R.		

DRAWN D. SAUNDERS	DATE
CHECKED	DATE
ENG.	DATE
THESE DRAWINGS AND SPECIFICATIONS ARE THE PROPERTY OF XMA CORP. OR OMNI SPECTRA AND SHALL NOT BE REPRODUCED, COPIED NOR USED - IN WHOLE OR IN PART - AS A BASIS FOR THE MANUFACTURE OR SALE OF OTHER ITEMS WITHOUT THE EXPRESS WRITTEN PERMISSION OF XMA CORP.	

		Omni Spectra Microwave Components Corporation 150 Dow Street, Manchester, NH 03101	
		P1603-222-2256 F1603-222-2259	
TITLE 2001-6010-00 SMA, TERMINATION			
SIZE B	CAGE CODE 3HT76	DRAWING NUMBER 2001-6010-00	
SCALE 10:1	PLATED AREA XXX	SHEET 1 OF 1	

5

4

3

2

1

BCSI