

SPECIFICATIONS

ELECTRICAL

FREQUENCY RANGE _____ DC - 18 GHz

VSWR
 DC - 4 GHz _____ 1.05:1 MAX
 4 - 8 GHz _____ 1.10:1 MAX
 8 - 12.4 GHz _____ 1.15:1 MAX
 12.4 - 18 GHz _____ 1.20:1 MAX

IMPEDANCE _____ 50 OHMS

TEMPERATURE RANGE _____ 4 KELVIN TO +125°C
 _____ 150°C STORAGE

POWER (AVG) _____ 2 WATTS
 POWER DERATES LINEARLY FROM +45°C TO <10% @+125°C

POWER (PEAK) _____ 500 WATTS
 (<5 μ SEC PW, <1% DUTY CYCLE)

MECHANICAL

INNER CONDUCTOR _____ BERYLLIUM COPPER PER
 ASTM B196 & B197.

OUTER CONDUCTOR _____ STEEL, CORROSION RESISTANT PER
 ASTM A484 & A582, CLASS 303, COND. A.

DIELECTRIC _____ TEFLON PER ASTM D1710.

FINISH

INNER CONDUCTOR _____ GOLD PLATED PER MIL-PRF-39012.

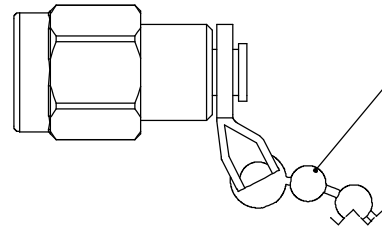
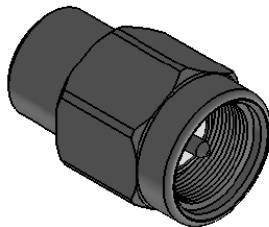
HOUSING/COUPLING NUT FINISH PER SUFFIX (REPLACING -0X IN P/N)
 -00 OUTER CONDUCTOR/NUT GOLD PLATED
 -02 OUTER CONDUCTOR/NUT PASSIVATED SS
 -01 OUTER CONDUCTOR GOLD PLATED, NUT PASSIVATED SS

ADD C FOR 2-2.5" CHAIN ATTACHED

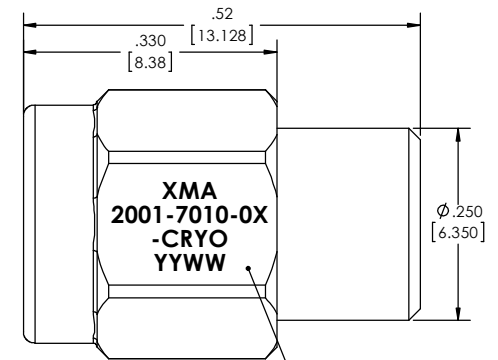
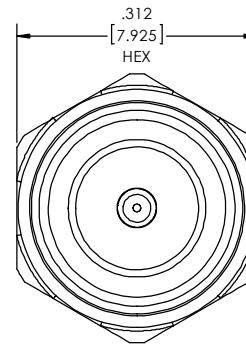
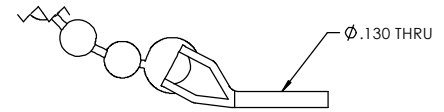
CONNECTOR INTERFACE COMPLIES WITH MIL-PRF-39012 AND MIL-STD-348
 FOR SMA MATING CHARACTERISTICS.

MARKING

PART LOOKS LIKE PRODUCT IMAGE ABOVE.
 PART MARKING ORIENTATION AND FORMAT AS SHOWN.
 MARKING TO BE AS LARGE AS POSSIBLE, CLEAR AND READABLE.
 YYWW EQUALS DATE CODE.



SHOWN WITH OPTIONAL
 #3 BEAD CHAIN STOCK
 SS/INCONEL MATERIAL
 2" - 2.5" LONG
 (SEE NOTE)



MARKING AREA
 SEE NOTE

REVISIONS				
REV	DESCRIPTION	ECO #	DATE	APPROVED
-	INITIAL RELEASE	14-173	8/23/13	T.KUHN
A	CHANGE OPERATING TEMP TO 4 KELVIN	14-251	10/24/13	T.KUHN
B	ADDED MARKING	15-226	7/20/15	T.KUHN
C	REVISED LENGTH TOL	15-344	12/2/15	T.KUHN

QTY.	PART NUMBER	DESCRIPTION	ITEM NO.
	2001-7010-0X-CRYO	TERMINATION, SMA-m, DC-18GHz, 2W	
1	2001-7000-0XBB	ASSEMBLY, TERMINATION, SMA-m, DC-18GHz, 2W, UNMARKED	1

DRAWING PRACTICES PER ANSI Y14.5 DIMENSIONS ARE IN INCHES AND APPLY BEFORE/AFTER PROCESSING	UNLESS OTHERWISE SPECIFIED TOLERANCES IN: DECIMALS INCH [MM] X" .05" [1.27] .XX" .03" [.76] .XXX" .01" [.25]	DRAWN MCCORMICK 7/20/15 CHECKED MCCORMICK 7/20/15 ENG APPR. T.KUHN 7/20/15	DATE 7/20/15
SURFACE ROUGHNESS FINISH: SEE NOTES	ANGLES ±10°30' REMOVE ALL BURRS/SHARP W/ BREAK / R OF .003" TO .0005" UNLESS OTHERWISE NOTED DIAS CONCENTRIC <.003 T.I.F.	THESE DRAWINGS AND SPECIFICATIONS ARE THE PROPERTY OF XMA CORP. OR OMNI SPECTRA AND SHALL NOT BE REPRODUCED, COPIED NOR USED IN WHOLE OR IN PART AS A BASIS FOR THE MANUFACTURE OR SALE OF OTHER ITEMS WITHOUT THE EXPRESS WRITTEN PERMISSION OF XMA CORP.	
MATERIAL: SEE NOTES	DO NOT SCALE PRINT		
NOTE: THIS DRAWING INCORPORATES THIRD ANGLE PROJECTION.		Phone: 603-222-2256 Fax: 603-222-2259 150 Dow Street, Manchester, NH 03103 TITLE TERMINATION, SMA-m, DC-18GHz, 2W	
INTERPRET LAW ANSI Y14.5-1982		SIZE C 3HT76	DRAWING NUMBER 2001-7010-0X-CRYO REV C

SCALE	PLATED AREA 50 IN	SHEET 1 OF 1
-------	-------------------	--------------