

ELECTRICAL SPECIFICATIONS

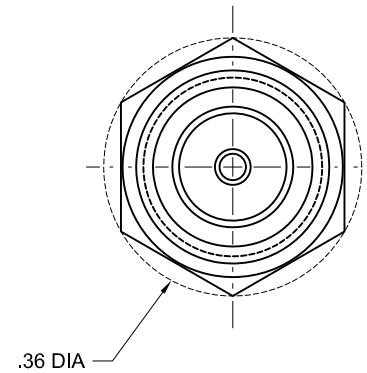
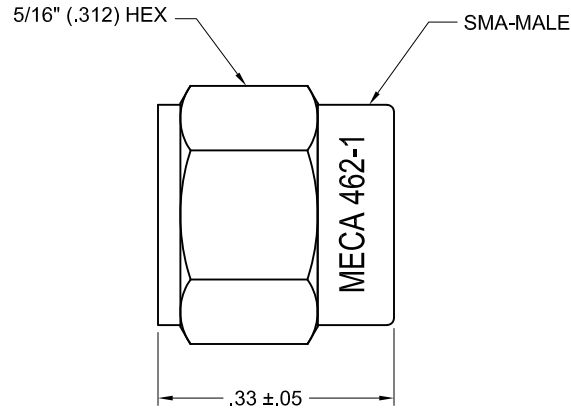
FREQUENCY: DC - 18.00 GHz
 IMPEDANCE (NOM) 50 OHMS
 VSWR (MAX):
 DC - 8.00 GHz 1.10:1
 8.00 - 12.40 GHz 1.15:1
 12.40 - 18.00 GHz 1.20:1


POWER (AVG): 1 WATTS @ +25°C
 DERATES LINEARLY TO
 0 WATTS @ +125°C

POWER (PEAK): 250 WATTS 5 μSEC PULSE,
 0.06% DUTY CYCLE

MECHANICAL SPECIFICATIONS

CONNECTOR: STAINLESS STEEL , PASSIVATE
 CONTACT PIN: BRASS, GOLD PLATE
 INSULATOR: PTFE, VIRGIN ELECTRICAL GRADE
 TEMPERATURE: -55°C TO +85°C
 WEIGHT: 0.07 oz



D	SEE DCN #081105-3	11/06/08	AC	RR	MATERIAL: SEE ABOVE	UNLESS OTHERWISE SPECIFIED, DIMENSIONS ARE IN INCHES	 ELECTRONICS, INC. DENVERVILLE, NEW JERSEY e-meca.com		
LTR	PG	DESCRIPTION	DATE	DR	APP	FINISH: SEE ABOVE		TOLERANCES 2 PLACES: ±.02 3 PLACES: ±.01 ANGLES: ---	
					DRAWN: AI	DATE: 10/14/05	TIR: N/A	TITLE TERMINATION , 50 OHMS, 1 WATTS, TYPE SMA-MALE	
					APPROVED: JL	DATE: 10/14/05	SCALE: NTS	SIZE A	
							SHEET: 1 OF 1	CODE IDENT. NO. 22424	DRAWING NO. 462-1