

4

3

2

1

ELECTRICAL SPECIFICATIONS

VSWR
 DC - 4 GHz _____ 1.10 MAX
 4 - 12.4 GHz _____ 1.15 MAX
 12.4 GHz - 18 GHz _____ 1.25 MAX

IMPEDANCE _____ 50 OHMS

FREQUENCY RANGE _____ DC TO 18 GHz

POWER (AVG) _____ 2 WATTS
 DERATES LINEARLY FROM 100% @ ± 25°C TO 10% @ +125°C

POWER (PEAK) _____ 500 WATTS
 (<5 μ SEC PW, <0.02% DUTY CYCLE)

TEMPERATURE RANGE _____ -55°C TO +125°C

MECHANICAL

CENTER CONTACT _____ BERYLLIUM COPPER
 ALLOY C17200 OR C17300
 IAW ASTM B196/B197
 GOLD PLATED PER MIL-PRF-39012
 (ASTM-B488)

CONNECTOR HOUSING _____ STAINLESS STEEL IAW A582, TYPE
 303, PASSIVATED PER QQ-P-35

DIELECTRIC _____ TEFLON IAW ASTM-D1710

RESISTIVE ELEMENT _____ THIN FILM ON CERAMIC RESISTOR
 PREFERRED MATERIALS FOR USE
 AT CRYOGENIC TEMPERATURES TO
 0 KELVIN

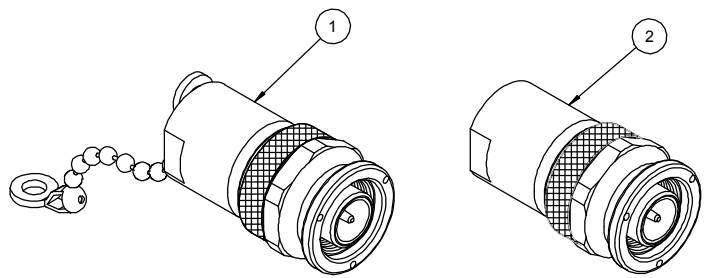
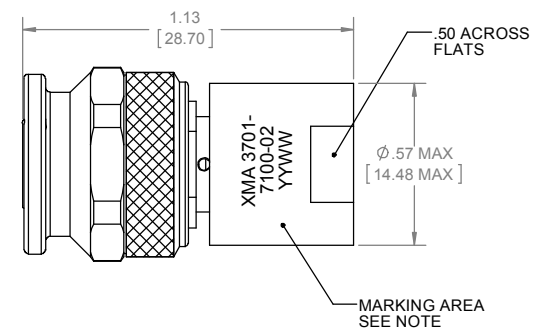
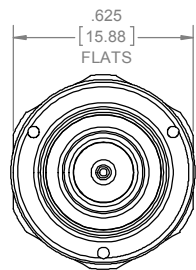
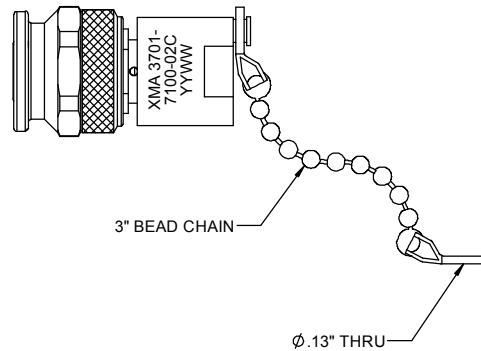
CONNECTOR MATING INTERFACE DIMENSIONS COMPLY WITH MIL-PRF-39102 AND MIL-STD-348 FOR TNC A MALE CONNECTORS

DESIGNED TO MEET ALL ENVIRONMENTAL REQUIREMENTS OF MIL-DTL-39030

MARKING

PART LOOKS LIKE PRODUCT IMAGE ABOVE.
 PART MARKING ORIENTATION AND FORMAT AS SHOWN.
 MARKING TO BE AS LARGE AS POSSIBLE BE, CLEAR, READABLE.
 YYWW EQUALS DATE CODE.

| REVISIONS | | | | |
|-----------|-----------------------|--------|---------|----------|
| REV | DESCRIPTION | ECO # | DATE | APPROVED |
| C | REDRAWN IN SOLIDWORKS | 14-215 | 5/28/14 | T.KUHN |
| D | ADDED DATECODE | 15-129 | 5/12/15 | T.KUHN |
| E | ADDED CHAINED VIEW | 15-212 | 7/8/15 | T.KUHN |



TABLE

| PART # | CHAIN |
|---------------|-------|
| 3701-7100-02 | NO |
| 3701-7100-02C | YES |

| NO CHAIN | CHAIN | PART NO. | DESCRIPTION | ITEM NO |
|----------|-------|-------------------|--|---------|
| | | SEE TABLE | TERMINATION, TNC, MALE, DC-18GHz, 2 WATTS | |
| - | 1 | TA-3701-7100-02CU | TERMINATION, TNC, MALE, DC-18GHz, 2 WATTS, CHAINED, UNMARKED | 1 |
| 1 | - | TA-3701-7100-02U | TERMINATION, TNC, MALE, DC-18GHz, 2 WATTS, UNMARKED | 2 |

DRAWING PRACTICES PER ANSI Y-14.5
 DIMENSIONS ARE IN INCHES AND APPLY BEFORE/AFTER PROCESSING

SURFACE ROUGHNESS: 63

FINISH: [Symbol]

MATERIAL: [Symbol]

NOTE: THIS DRAWING INCORPORATES THIRD ANGLE PROJECTION.

INTERPRET IAW ANSI Y14.5-1982

UNLESS OTHERWISE SPECIFIED TOLERANCES IN:
 DECIMALS INCH [MM]
 .X" .05" [1.27]
 .XX" .03" [.76]
 .XXX" .010" [.25]

ANGLES ±0°30'
 REMOVE ALL BURRS/SHARP W/ BREAK / R OF .003" TO .0005"
 UNLESS OTHERWISE NOTED DIAS CONCENTRIC <.003 T.I.F.

DO NOT SCALE PRINT

DRAWN: McCORMICK 05/28/14
 DATE: 05/28/14
 CHECKED: McCORMICK 05/28/14
 DATE: 05/28/14
 ENG APPR: T.KUHN 05/28/14

THESE DRAWINGS AND SPECIFICATIONS ARE THE PROPERTY OF XMA CORP. OR OMNI SPECTRA AND SHALL NOT BE REPRODUCED, COPIED NOR USED IN WHOLE OR IN PART AS A BASIS FOR THE MANUFACTURE OR SALE OF OTHER ITEMS WITHOUT THE EXPRESS WRITTEN PERMISSION OF XMA CORP.

XMA Omni SpectraSM

Phone: 603-222-2256 Fax: 603-222-2259
 150 Dow Street, Manchester, NH 03103

TERMINATION, TNC, MALE, DC-18GHz, 2 WATTS

| SIZE | CAGE CODE | DRAWING NUMBER | REV |
|------|-----------|----------------|-----|
| C | 3HT76 | 3701-7100-02 | E |

SCALE: PLATED AREA 50 IN SHEET 1 OF 1

4

3

2

1