

4

3

2

1

ELECTRICAL SPECIFICATIONS

VSWR
 DC- 4 GHz _____ 1.10 MAX
 4 - 12.4 GHz _____ 1.15 MAX
 12.4 GHz - 18 GHz _____ 1.25 MAX

IMPEDANCE _____ 50 OHMS

FREQUENCY RANGE _____ DC TO 18 GHz

POWER (AVG) _____ 2 WATTS
 DERATES LINEARLY FROM 100% @E +25°C TO 10% @ +125°C

POWER (PEAK) _____ 500 WATTS
 (<5 μ SEC PW, <0.02% DUTY CYCLE)

TEMPERATURE RANGE _____ -55°C TO +125°C

MECHANICAL

CENTER CONTACT _____ BERYLLIUM COPPER
 ALLOY C17200 OR C17300
 IAW ASTM B196/B197
 GOLD PLATED PER MIL-PRF-39012
 (ASTM-B488)

CONNECTOR HOUSING _____ STAINLESS STEEL IAW A582, TYPE
 303, PASSIVATED PER QQ-P-35

DIELECTRIC _____ TEFLON IAW ASTM-D1710

RESISTIVE ELEMENT _____ THIN FILM ON CERAMIC RESISTOR
 PREFERRED MATERIALS FOR USE
 AT CRYOGENIC TEMPERATURES TO
 0 KELVIN

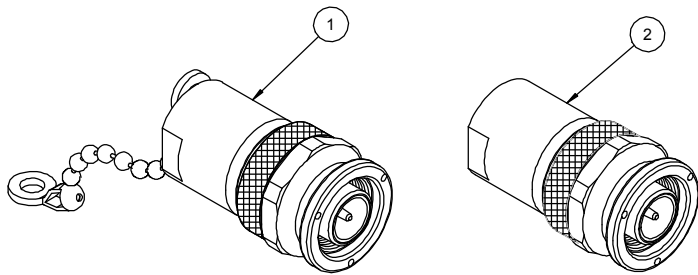
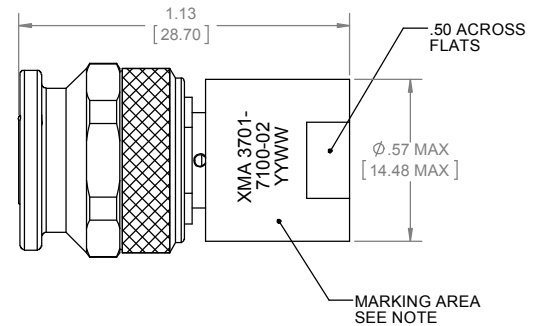
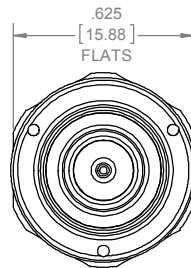
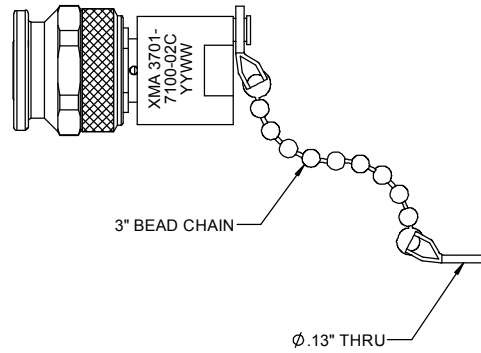
CONNECTOR MATING INTERFACE DIMENSIONS COMPLY WITH MIL-PRF-39102 AND MIL-STD-348 FOR TNC A MALE CONNECTORS

DESIGNED TO MEET ALL ENVIRONMENTAL REQUIREMENTS OF MIL-DTL-39030

MARKING

PART LOOKS LIKE PRODUCT IMAGE ABOVE.
 PART MARKING ORIENTATION AND FORMAT AS SHOWN.
 MARKING TO BE AS LARGE AS POSSIBLE BE, CLEAR, READABLE.
 YYWW EQUALS DATE CODE.

REVISIONS				
REV	DESCRIPTION	ECO #	DATE	APPROVED
C	REDRAWN IN SOLIDWORKS	14-215	5/28/14	T.KUHN
D	ADDED DATECODE	15-129	5/12/15	T.KUHN
E	ADDED CHAINED VIEW	15-212	7/8/15	T.KUHN



TABLE

PART #	CHAIN
3701-7100-02	NO
3701-7100-02C	YES

NO CHAIN	CHAIN	PART NO.	DESCRIPTION	ITEM NO
		SEE TABLE	TERMINATION, TNC, MALE, DC-18GHz, 2 WATTS	
-	1	TA-3701-7100-02CU	TERMINATION, TNC, MALE, DC-18GHz, 2 WATTS, CHAINED, UNMARKED	1
1	-	TA-3701-7100-02U	TERMINATION, TNC, MALE, DC-18GHz, 2 WATTS, UNMARKED	2

DRAWING PRACTICES PER ANSI Y-14.5
 DIMENSIONS ARE IN INCHES AND APPLY BEFORE/AFTER PROCESSING

SURFACE ROUGHNESS: 63

FINISH: [Symbol]

MATERIAL: [Symbol]

NOTE: THIS DRAWING INCORPORATES THIRD ANGLE PROJECTION.

INTERPRET IAW ANSI Y14.5-1982

UNLESS OTHERWISE SPECIFIED TOLERANCES IN:
 DECIMALS INCH [MM]
 .X" .05" [1.27]
 .XX" .03" [.76]
 .XXX" .010" [.25]

ANGLES ±0°30'
 REMOVE ALL BURRS/SHARP W/ BREAK / R OF .003" TO .0005"
 UNLESS OTHERWISE NOTED DIAS CONCENTRIC <.003 T.I.F.

DO NOT SCALE PRINT

DRAWN: McCORMICK 05/28/14
 DATE: 05/28/14
 CHECKED: McCORMICK 05/28/14
 DATE: 05/28/14
 ENG APPR: T.KUHN 05/28/14

THESE DRAWINGS AND SPECIFICATIONS ARE THE PROPERTY OF XMA CORP. OR OMNI SPECTRA AND SHALL NOT BE REPRODUCED, COPIED NOR USED IN WHOLE OR IN PART AS A BASIS FOR THE MANUFACTURE OR SALE OF OTHER ITEMS WITHOUT THE EXPRESS WRITTEN PERMISSION OF XMA CORP.

XMA Omni Spectra[®]

Phone: 603-222-2256 Fax: 603-222-2259
 150 Dow Street, Manchester, NH 03103

TERMINATION, TNC, MALE, DC-18GHz, 2 WATTS

SIZE	CAGE CODE	DRAWING NUMBER	REV
C	3HT76	3701-7100-02	E

SCALE: PLATED AREA 50 IN SHEET 1 OF 1

4

3

2

1