

**ELECTRICAL SPECIFICATIONS**

FREQUENCY RANGE \_\_\_\_\_ DC - 40GHz

ATTENUATION \_\_\_\_\_ DC-26.5GHz \_\_\_\_\_ 26.5-40GHz  
 0 TO 6dB \_\_\_\_\_ ±0.5 dB \_\_\_\_\_ ±0.8 dB  
 10 TO 15, 20dB \_\_\_\_\_ ±0.6 dB \_\_\_\_\_ ±1.0 dB  
 30dB \_\_\_\_\_ ±0.8 dB \_\_\_\_\_ ±1.0 dB

VSWR  
 DC - 18.0 GHz \_\_\_\_\_ <1.30:1  
 18.0 - 40 GHz \_\_\_\_\_ <1.40:1

POWER \_\_\_\_\_ @ 25°C SEE TABLE  
 DERATES LINEARLY TO 10% @ 125°C

IMPEDANCE \_\_\_\_\_ 50 OHMS

OPERATING TEMP RANGE \_\_\_\_\_ -55°C TO +125°C

**MECHANICAL**

HOUSING \_\_\_\_\_ PASSIVATED STAINLESS  
 STEEL IAW ASTM-A484  
 & ASTM-A582 ALLOY 303 COND A

CENTER CONDUCTORS \_\_\_\_\_ GOLD PLATED BERYLLIUM COPPER

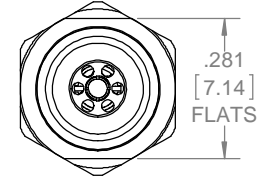
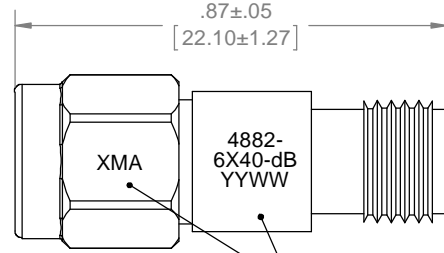
ROHS COMPLIANT

**MARKING**

PART LOOKS LIKE PRODUCT IMAGE ABOVE.  
 PART MARKING ORIENTATION AND FORMAT AS SHOWN (CURVED SURFACE).  
 dB = SEE TABLE FOR TWO DIGIT dB VALUE.  
 REPLACE "X" WITH ONE DIGIT REPRESENTING POWER LEVEL FROM TABLE.  
 MARKING TO BE AS LARGE AS POSSIBLE.  
 YYWW EQUALS DATE CODE.

DASH #	ATTENUATION	MARKED dB VALUE
-00	0	00
-01	1	01
-02	2	02
-03	3	03
-04	4	04
-05	5	05
-06	6	06
-07	7	07
-08	8	08
-09	9	09
-10	10	10
-12	12	12
-15	15	15
-20	20	20
-30	30	30

REVISIONS				
REV	DESCRIPTION	ECO #	DATE	APPROVED
F	REVISED MARKING	15-163	6/9/15	T.KUHN
G	REVISED MARKING ORIENTATION	16-033	2/12/16	T.KUHN
H	REVISED MARKING	16-080	4/12/16	T.KUHN
J	REVISED MARKING LOCATIONS	16-166	8/4/16	T.KUHN



4882-6X40-dB	POWER LEVEL
X=0	0.5 WATT
X=1	1 WATT
X=2	2 WATTS

QTY.	PART NUMBER	DESCRIPTION	ITEM NO.
X	4882-6X40-dB	ATTENUATOR, 2.9mm-m/f, DC-40 GHz, 1W	
1	TA-4882-6X40-dBU	ASSY, ATTENUATOR, 2.9mm-m/f, DC-40 GHz, 1W, UNMARKED	1

DRAWING PRACTICES PER ANSI-Y-14.5 MIL-STD-100 & 1000

DIMENSIONS ARE IN INCHES AND APPLY BEFORE / AFTER PROCESSING

SURFACE ROUGHNESS  $\mu$ INCHES 63

FINISH:

SEE NOTES

MATERIAL:

SEE NOTES

NOTE: THIS DRAWING INCORPORATES THIRD ANGLE PROJECTION.

INTERPRET IAW ANSI Y14.5-1982

UNLESS OTHERWISE SPECIFIED TOLERANCES IN:

DECIMALS	INCH	[MM]
.X"	.05"	[1.27]
.XX"	.03"	[.76]
.XXX"	.010"	[.25]

ANGLES ±0°30'

REMOVE ALL BURRS/SHARP W/ BREAK / R OF .003" TO .0005" UNLESS OTHERWISE NOTED

DIAS CONCENTRIC <.003 T.I.R.

DO NOT SCALE PRINT

DRAWN DATE  
**T.KUHN** 6/12/07

CHECKED DATE  
**MCCORMICK** 6/9/15

ENG. APPR. DATE  
**T.KUHN** 5/13/09

Phone: 603-222-2256 Fax: 603-222-2259  
 150 Dow Street, Manchester, NH 03101

TITLE

ATTENUATOR, 2.9mm-m/f, DC-40GHz, 1W			
SIZE B	CAGE CODE 3HT76	DRAWING NUMBER 4882-6X40-dB	REV J
SCALE	PLATED AREA SQ. IN	SHEET 1 OF 1	