

SPECIFICATIONS

ELECTRICAL

FREQUENCY RANGE _____ DC - 40GHz

ATTENUATION _____ DC-26.5GHz _____ 26.5-40GHz
 0 TO 6dB _____ ±0.5 dB _____ ±0.8 dB
 10 TO 15, 20dB _____ ±0.6 dB _____ ±1.0 dB
 30dB _____ ±0.8 dB _____ ±1.0 dB

VSWR
 DC - 18.0 GHz _____ <1.30:1
 18.0 - 40 GHz _____ <1.40:1

POWER _____ @ 25°C SEE TABLE
 DERATES LINEARLY TO 10% @ 125°C

IMPEDANCE _____ 50 OHMS

OPERATING TEMP RANGE _____ -55°C TO +125°C

MECHANICAL

HOUSING _____ PASSIVATED STAINLESS
 STEEL IAW ASTM-A484
 & ASTM-A582 ALLOY 303 COND A

CENTER CONDUCTORS _____ GOLD PLATED BERYLLIUM COPPER

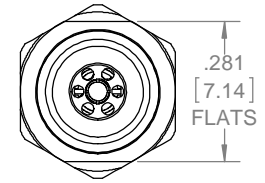
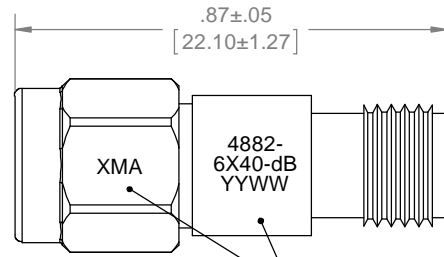
ROHS COMPLIANT

MARKING

PART LOOKS LIKE PRODUCT IMAGE ABOVE.
 PART MARKING ORIENTATION AND FORMAT AS SHOWN (CURVED SURFACE).
 dB = SEE TABLE FOR TWO DIGIT dB VALUE.
 REPLACE "X" WITH ONE DIGIT REPRESENTING POWER LEVEL FROM TABLE.
 MARKING TO BE AS LARGE AS POSSIBLE.
 YYWW EQUALS DATE CODE.

DASH #	ATTENUATION	MARKED dB VALUE
-00	0	00
-01	1	01
-02	2	02
-03	3	03
-04	4	04
-05	5	05
-06	6	06
-07	7	07
-08	8	08
-09	9	09
-10	10	10
-12	12	12
-15	15	15
-20	20	20
-30	30	30

REVISIONS				
REV	DESCRIPTION	ECO #	DATE	APPROVED
F	REVISED MARKING	15-163	6/9/15	T.KUHN
G	REVISED MARKING ORIENTATION	16-033	2/12/16	T.KUHN
H	REVISED MARKING	16-080	4/12/16	T.KUHN
J	REVISED MARKING LOCATIONS	16-166	8/4/16	T.KUHN



4882-6X40-dB	POWER LEVEL
X=0	0.5 WATT
X=1	1 WATT
X=2	2 WATTS

QTY.	PART NUMBER	DESCRIPTION	ITEM NO.
X	4882-6X40-dB	ATTENUATOR, 2.9mm-m/f, DC-40 GHz, 1W	
1	TA-4882-6X40-dBU	ASSY, ATTENUATOR, 2.9mm-m/f, DC-40 GHz, 1W, UNMARKED	1

DRAWING PRACTICES PER ANSI-Y-14.5 MIL-STD-100 & 1000
 DIMENSIONS ARE IN INCHES AND APPLY BEFORE / AFTER PROCESSING
 SURFACE ROUGHNESS μ INCHES 63
 FINISH:
 SEE NOTES
 MATERIAL:
 SEE NOTES
 NOTE:
 THIS DRAWING INCORPORATES THIRD ANGLE PROJECTION.
 INTERPRET IAW ANSI Y14.5-1982

UNLESS OTHERWISE SPECIFIED TOLERANCES IN:
 DECIMALS INCH [MM]
 .X" .05" [1.27]
 .XX" .03" [.76]
 .XXX" .010" [.25]
 ANGLES ±0°30'
 REMOVE ALL BURRS/SHARP W/ BREAK / R OF .003" TO .0005"
 UNLESS OTHERWISE NOTED DIAS CONCENTRIC <.003 T.I.R.

DRAWN DATE
 T.KUHN 6/12/07
 CHECKED DATE
 MCCORMICK 6/9/15
 ENG. APPR. DATE
 T.KUHN 5/13/09

THESE DRAWINGS AND SPECIFICATIONS ARE THE PROPERTY OF XMA CORP. OR OMNI SPECTRA AND SHALL NOT BE REPRODUCED, COPIED NOR USED - IN WHOLE OR IN PART - AS A BASIS FOR THE MANUFACTURE OR SALE OF OTHER ITEMS WITHOUT THE EXPRESS WRITTEN PERMISSION OF XMA CORP.

XMA Omni Spectra
 Phone: 603-222-2256 Fax: 603-222-2259
 150 Dow Street, Manchester, NH 03101

TITLE
ATTENUATOR, 2.9mm-m/f, DC-40GHz, 1W

SIZE B	CAGE CODE 3HT76	DRAWING NUMBER 4882-6X40-dB	REV J
SCALE	PLATED AREA SQ. IN	SHEET 1 OF 1	

DO NOT SCALE PRINT