

SPECIFICATIONS

ELECTRICAL

FREQUENCY RANGE _____ DC TO 12.4 GHz

ATTENUATION _____ 0-6 dB _____ ±0.3 dB
 _____ 7-10, 20 dB _____ ±0.5 dB
 _____ 11-19, 21-30 dB _____ ±0.7 dB
 _____ 40 dB _____ ±1.0 dB
 _____ 50, 60 dB _____ ±2.0 dB

(AVAILABLE IN 1/2 dB VALUES 0.5 - 10.5 dB)

VSWR(MAX) _____ DC-4 _____ 1.15
 _____ 4-12.4 _____ 1.25

POWER _____ 2 WATTS (AVG) 0.5 dB AND ABOVE
 _____ 50 WATTS FOR 0 dB UNIT
 _____ 500 WATTS (PEAK)

DERATED LINEARLY FROM 100% AT +25° C TO 10% AT +125 C
 * 5µ S PULSE W, 0.05% DUTY CYCLE

IMPEDANCE: _____ 50 OHMS

MECHANICAL

OPERATING TEMP RANGE -65 TO +125°
 1.24 LENGTH / WEIGHT MAX. 0.40oz. (11.3g)
 1.80 LENGTH / WEIGHT MAX. 0.60oz. (15.3g)

MATERIAL

OUTER CONDUCTOR: STAINLESS STEEL NON MAGNETIC,
 PASSIVATED FINISH.

CENTER CONDUCTOR: BERYLLIUM COPPER, GOLD PLATED FINISH.

DIELECTRIC: TEFLON.

MATERIALS & FINISHES TYPICALLY PER MIL-PRF-39012

ORDERING INFORMATION

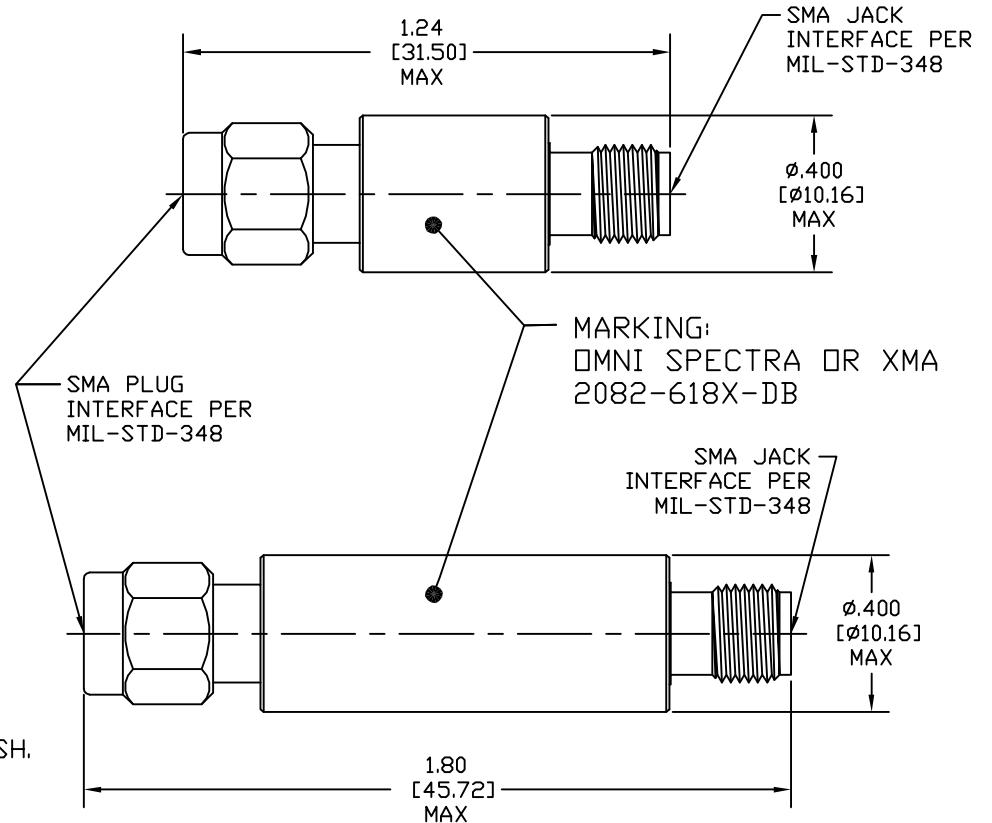
2082-6181 -01 THRU -03
 2082-6182 -04 THRU -06
 2082-6183 -07 THRU -10
 2082-6184 -11 THRU -20
 2082-6185 -30 AND -40(1.24LG)
 2082-6186 -40, -50, -60
 2081-618X-dB FOR MALE TO MALE
 2080-618X-dB FOR FEMALE TO FEMALE

PRODUCTION
RELEASE

NOTE:
THIS DRAWING INCORPORATES
THIRD ANGLE PROJECTION
INTERPRET IN ACC. WITH Y145-1992

REVISIONS

REV	DESCRIPTION	DATE	APPROVED
A	REVISED TO C SIZE SHT, UPDATED FORMAT	09/09/10	D.S.S



DRAWING PRACTICES PER ANSI Y-34.5 MIL-STD-100 & 1000	UNLESS OTHERWISE SPECIFIED TOLERANCES IN:	DRAWN T. MAIN	DATE 07/28/2010						
DIMENSIONS ARE IN INCHES AND APPLY BEFORE/AFTER PROCESSING	DECIMALS .075" [1.9] XXX .050" [1.3] XXXX .030 [0.76]	CHECKED	DATE						
SURFACE ROUGHNESS		ENG. D. SAUNDERS	DATE 09/09/2010						
FINISH: SEE NOTES	UNLESS OTHERWISE NOTED DIA'S CONCENTRIC <.003 T.I.R.	THESE DRAWINGS AND SPECIFICATIONS ARE THE PROPERTY OF XMA CORP. / OMNI SPECTRA AND SHALL NOT BE REPRODUCED, COPIED, NOR USED, IN WHOLE OR IN PART, AS A BASIS FOR THE DESIGN, MANUFACTURE OR SALE OF OTHER ITEMS WITHOUT THE EXPRESS WRITTEN PERMISSION OF XMA CORP. CUSTOMERS AND VENDORS MAY COPY FOR INTERNAL REVIEW USE AS WEDED							
MATERIAL: SEE NOTES		<table border="1"> <tr> <td>SIZE C</td> <td>CAGE CODE 3HT76</td> <td>DWG NO. 2082-618X-XX</td> </tr> <tr> <td>SCALE 4:1</td> <td>PLATING / FINISH NONE</td> <td>XXX</td> </tr> </table>		SIZE C	CAGE CODE 3HT76	DWG NO. 2082-618X-XX	SCALE 4:1	PLATING / FINISH NONE	XXX
SIZE C	CAGE CODE 3HT76	DWG NO. 2082-618X-XX							
SCALE 4:1	PLATING / FINISH NONE	XXX							

WWW.XMACorp.com Sales@XMACorp.com

XMA Powered by: **Omni Spectra®**

XMA Corp. 150 Dow St. Manchester, NH 03045 (603) 222-2256 fax 222-2259

TITLE
FIXED COAXIAL ATTENUATOR

SIZE C	CAGE CODE 3HT76	DWG NO. 2082-618X-XX
SCALE 4:1	PLATING / FINISH NONE	XXX

SHEET 1 OF 1