

SPECIFICATIONS

ELECTRICAL

FREQUENCY RANGE	DC TO 18 GHz	
ATTENUATION	0-6 dB	±0.3 dB
	7-10, 20 dB	±0.5 dB
	11-19, 21-30 dB	±0.7 dB
	40 dB	±1.0 dB
	50, 60 dB	±2.0 dB
	(AVAILABLE IN 1/2 dB VALUES 0.5 - 10.5 dB)	
VSWR(MAX)	DC-4	1.15
	4-12.4	1.25
	12.4-18	1.35
POWER	2 WATTS (AVG) 0.5 dB AND ABOVE	
	50 WATTS FOR 0 dB UNIT	
	500 WATTS (PEAK)	
	DERATED LINEARLY FROM 100% AT +25° C TO 10% AT +125 C	
	* 5µ S PULSE W, 0.05% DUTY CYCLE	
IMPEDANCE:	50 OHMS	

MECHANICAL

OPERATING TEMP RANGE -65 TO +125°
 1.24 LENGTH / WEIGHT MAX. 0.40oz. (11.3g)
 1.80 LENGTH / WEIGHT MAX. 0.60oz. (15.3g)

MATERIAL

OUTER CONDUCTOR: STAINLESS STEEL NON MAGNETIC,
 PASSIVATED FINISH.
 CENTER CONDUCTOR: BERYLLIUM COPPER, GOLD PLATED FINISH.
 DIELECTRIC: TEFLON.
 MATERIALS & FINISHES TYPICALLY PER MIL-PRF-39012

ORDERING INFORMATION

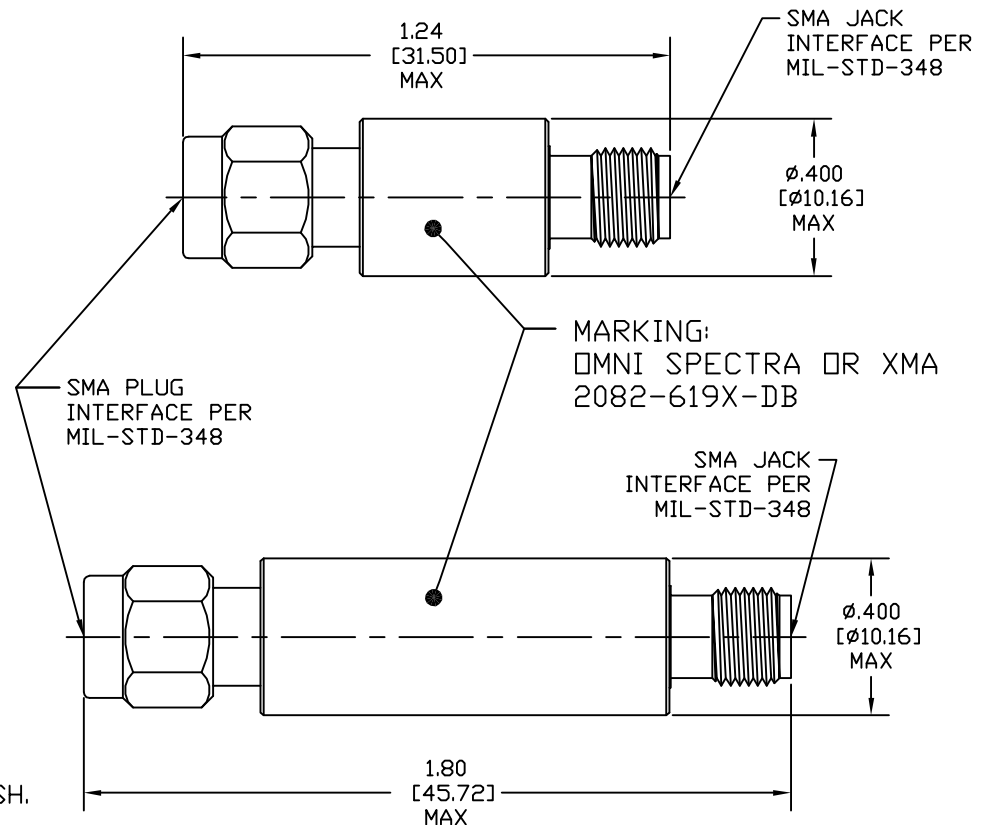
2082-6191 -01 THRU -03
 2082-6192 -04 THRU -06
 2082-6193 -07 THRU -10
 2082-6194 -11 THRU -20
 2082-6195 -30 AND -40(1.24LG)
 2082-6196 -40, -50, -60
 2081-619X-dB FOR MALE TO MALE
 2080-619X-dB FOR FEMALE TO FEMALE

PRODUCTION
RELEASE

NOTE:
THIS DRAWING INCORPORATES
THIRD ANGLE PROJECTION
INTERPRET IN ACC. WITH Y145-1992

REVISIONS

REV	DESCRIPTION	DATE	APPROVED
E	REVISED TO C SIZE SHT, UPDATED FORMAT	09/09/10	D.S.S



DRIVING PRACTICES PER ANSI-Y14.5 MIL-STD-100 & 1000	UNLESS OTHERWISE SPECIFIED TOLERANCES IN:	DRAWN T. MAIN	DATE 07/28/2010
DECIMALS .075 [1.9]	INCH .050 [1.3]	CHECKED	DATE
FRAMES .030 [0.76]		ENG. D. SAUNDERS	DATE 09/09/2010
FINISH: SEE NOTES	UNLESS OTHERWISE NOTED DIA'S CONCENTRIC <.003 T.I.R.	THESE DRAWINGS AND SPECIFICATIONS ARE THE PROPERTY OF XMA CORP. OMNI SPECTRA AND SHALL NOT BE REPRODUCED, COPIED, NOR USED, IN WHOLE OR IN PART, AS A BASIS FOR THE DESIGN, MANUFACTURE OR SALE OF OTHER ITEMS WITHOUT THE EXPRESS WRITTEN PERMISSION OF XMA CORP. CUSTOMERS AND VENDORS MAY COPY FOR INTERNAL REVIEW USE AS WEDED	
MATERIAL: SEE NOTES		SIZE C	CAGE CODE 3HT76
		SCALE 4:1	DWG NO. 2082-619X-XX

WWW.XMACorp.com Sales@XMACorp.com

XMA Powered by: **Omni Spectra®**

XMA Corp. 150 Dow St. Manchester, NH 03045 (603) 222-2256 fax 222-2259

TITLE
FIXED COAXIAL ATTENUATOR

SCALE 4:1 PLATING AREA SQUARE INCHES XXX SHEET 1 OF 1