

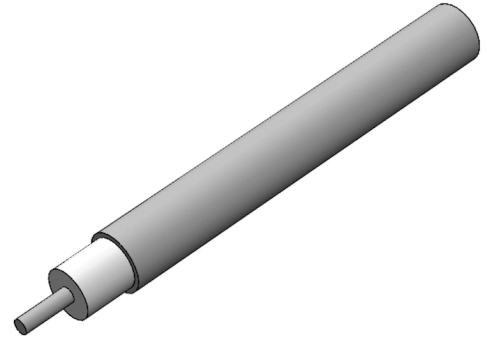
# .141 Coaxial Cable – 50 Ω Semi-Rigid Tin-Plated Aluminum



© 2024 EZ FORM CABLE INC. ALL RIGHTS RESERVED.

EZ-141-AL-TP/M17

ø.141" Semi-Rigid Tin-Plated Aluminum Outer Conductor,  
SPCW Center Conductor, PTFE Dielectric, 50 Ω.



## Specifications

### DIMENSIONS

Center Conductor Diameter	0.0362 in
Dielectric Diameter	0.1175 in
Outer Conductor Diameter	0.1410 in

### MATERIALS

Center Conductor Material	SPCW
Dielectric Material	PTFE
Outer Conductor Material	Aluminum
Outer Conductor Plating Material	Tin
RoHS Compliant	Yes

### MECHANICAL CHARACTERISTICS

Minimum Temperature	-55 °C
Maximum Temperature	+125 °C
Inside Bend Radius (Minimum)	0.125 in
Weight	2.05 lbs per 100 ft

### ELECTRICAL CHARACTERISTICS

Nominal Impedance	50.0 Ω
Nominal Impedance Margin	±1.0 Ω
Velocity of Propagation	69.50%
Shielding Effectiveness	>165 db
Voltage Withstanding	5000 VRMS @ 60 Hz
Continuous Working Voltage	1900 VRMS max
Maximum Operating Frequency	34 GHz

### Attenuation

FREQUENCY	DB / 100 FT TYPICAL
0.5 GHz	7.6 db
1.0 GHz	11.1 db
5.0 GHz	28.1 db
10.0 GHz	43.4 db
18.0 GHz	63.6 db
26.5 GHz	82.8 db

### Power

FREQUENCY	WATTS CW @ 20 °C (MAX)
0.5 GHz	600 W
1.0 GHz	450 W
5.0 GHz	180 W
10.0 GHz	120 W
18.0 GHz	73 W
26.5 GHz	70 W