

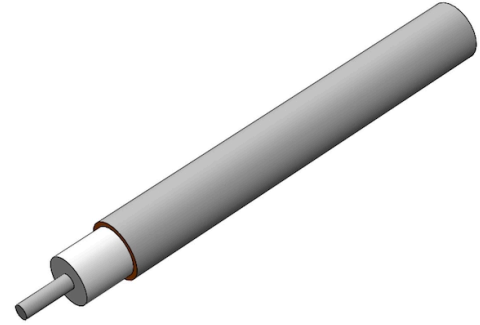
.141 Coaxial Cable – 50 Ω Semi-Rigid Tin-Plated Copper



© 2024 EZ FORM CABLE INC. ALL RIGHTS RESERVED.

EZ-141-TP/M17

ø.141" Semi-Rigid Tin-Plated Copper Outer Conductor, SPCW
Center Conductor, PTFE Dielectric, 50 Ω.



Specifications

DIMENSIONS

Center Conductor Diameter	0.0362 in
Dielectric Diameter	0.1175 in
Outer Conductor Diameter	0.1410 in

MATERIALS

Center Conductor Material	SPCW
Dielectric Material	PTFE
Outer Conductor Material	Copper
Outer Conductor Plating Material	Tin
RoHS Compliant	Yes

MECHANICAL CHARACTERISTICS

Minimum Temperature	-55 °C
Maximum Temperature	+125 °C
Inside Bend Radius (Minimum)	0.250 in
Weight	3.50 lbs per 100 ft

ELECTRICAL CHARACTERISTICS

Nominal Impedance	50.0 Ω
Nominal Impedance Margin	±1.0 Ω
Velocity of Propagation	69.50%
Shielding Effectiveness	>165 db
Voltage Withstanding	5000 VRMS @ 60 Hz
Continuous Working Voltage	1900 VRMS max
Maximum Operating Frequency	34 GHz

Attenuation

FREQUENCY	DB / 100 FT TYPICAL
0.5 GHz	7.6 db
1.0 GHz	11.1 db
5.0 GHz	28.1 db
10.0 GHz	43.4 db
18.0 GHz	63.6 db
26.5 GHz	82.8 db

Power

FREQUENCY	WATTS CW @ 20 °C (MAX)
0.5 GHz	600 W
1.0 GHz	450 W
5.0 GHz	180 W
10.0 GHz	120 W
18.0 GHz	73 W
26.5 GHz	70 W