

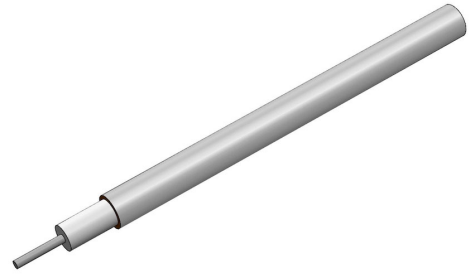
.0865 Coaxial Cable – 50 Ω MIL-DTL-17 Tin-Plated Copper – Soft Jacket



© 2024 EZ FORM CABLE INC. ALL RIGHTS RESERVED.

M17/133-00007

∅.0865" MIL-DTL-17 Tin-Plated Copper Outer Conductor,
SPCW Center Conductor, PTFE Dielectric, 50 Ω. Soft Jacket
Variant.



Specifications

DIMENSIONS

Center Conductor Diameter	0.0201 in
Dielectric Diameter	0.0660 in
Outer Conductor Diameter	0.0865 in

MATERIALS

Center Conductor Material	SPCW
Dielectric Material	PTFE
Outer Conductor Material	Copper
Outer Conductor Plating Material	Tin
RoHS Compliant	Yes

MECHANICAL CHARACTERISTICS

Minimum Temperature	-40 °C
Maximum Temperature	+125 °C
Inside Bend Radius (Minimum)	0.050 in
Weight	1.58 lbs per 100 ft

ELECTRICAL CHARACTERISTICS

Nominal Impedance	50.0 Ω
Nominal Impedance Margin	±1.5 Ω
Velocity of Propagation	69.50%
Shielding Effectiveness	>165 db
Voltage Withstanding	5000 VRMS @ 60 Hz
Continuous Working Voltage	1500 VRMS max
Maximum Operating Frequency	20 GHz

Attenuation

FREQUENCY	DB / 100 FT TYPICAL
0.5 GHz	15 db
1.0 GHz	22 db
5.0 GHz	50 db
10.0 GHz	80 db
18.0 GHz	110 db

Power

FREQUENCY	WATTS CW @ 20 °C (MAX)
0.5 GHz	180 W
1.0 GHz	130 W
5.0 GHz	54 W
10.0 GHz	35 W
18.0 GHz	24 W